

HLY1502 Advanced Planning



Spooling Vectran wire in March



power for heaters on fantail

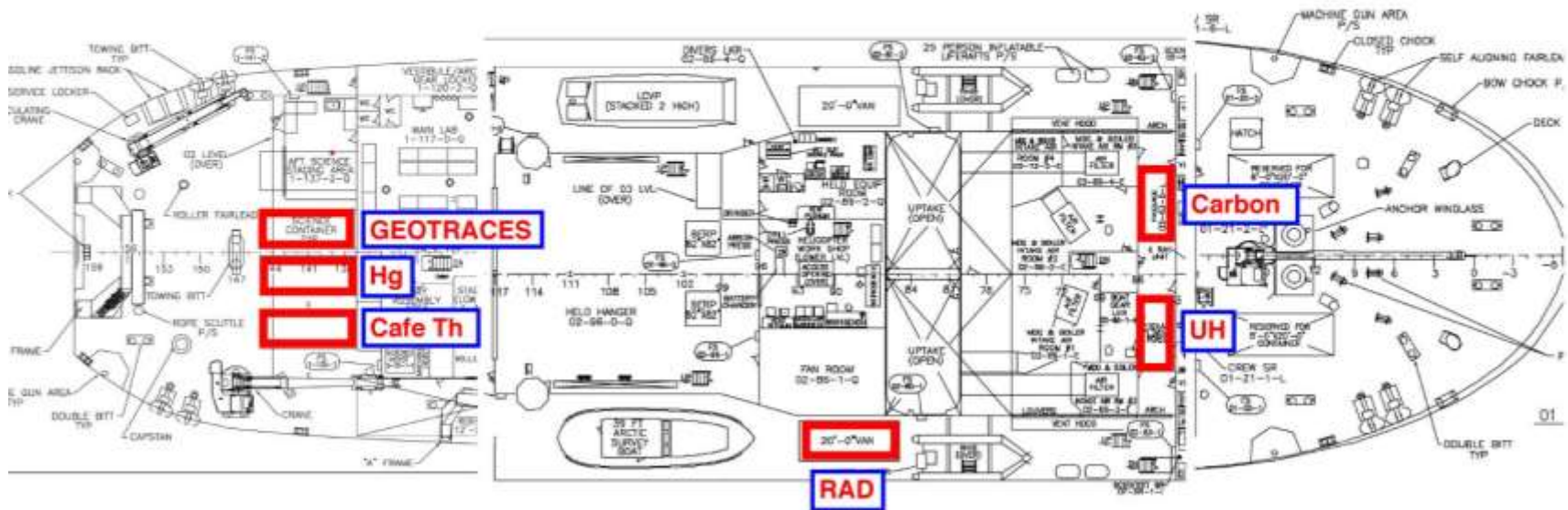


02 Porch Vans installed

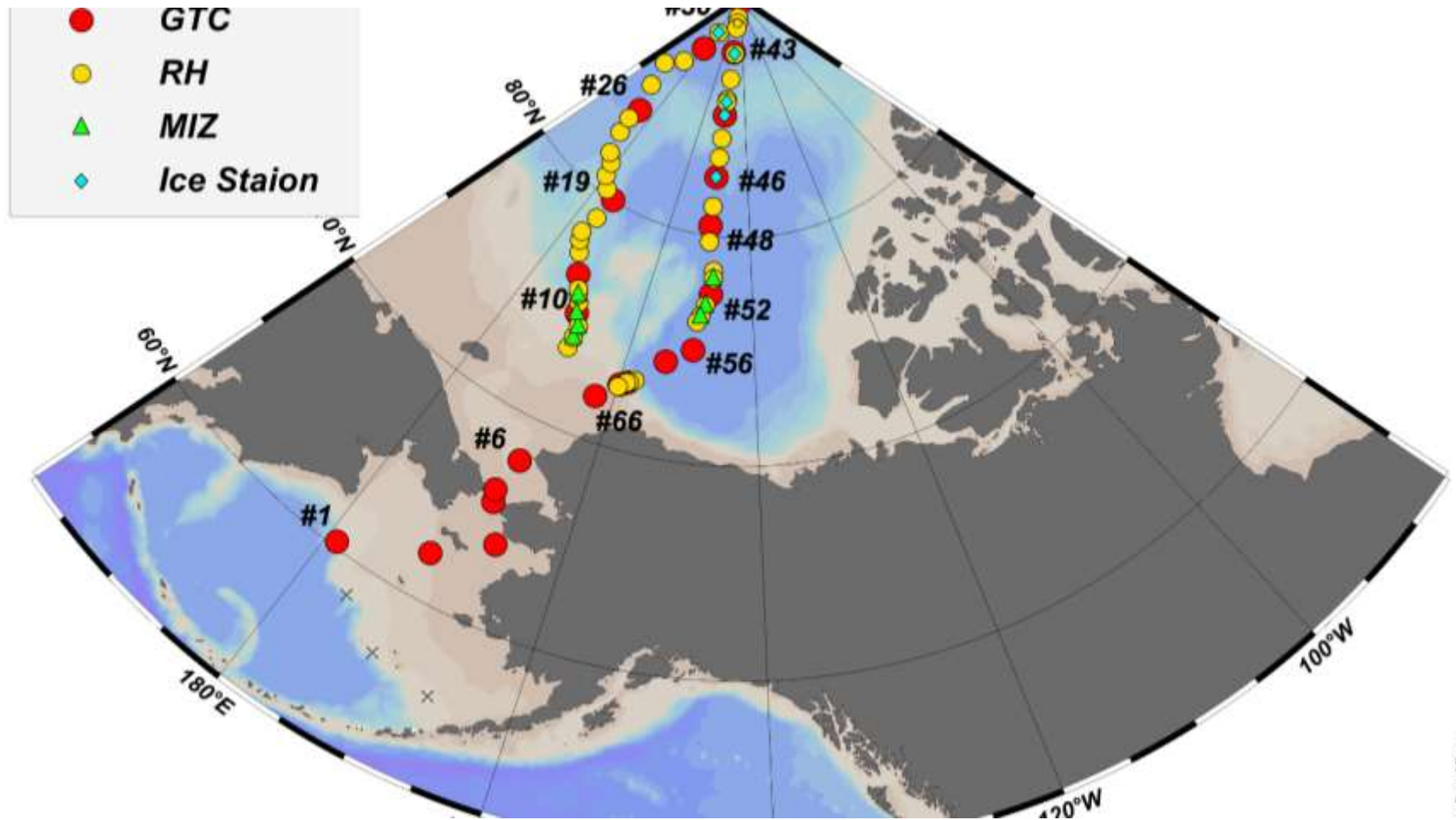
Main Deck
Fantail

02 Deck
Midship

Main Deck
Bow



HLY1502 sample stations



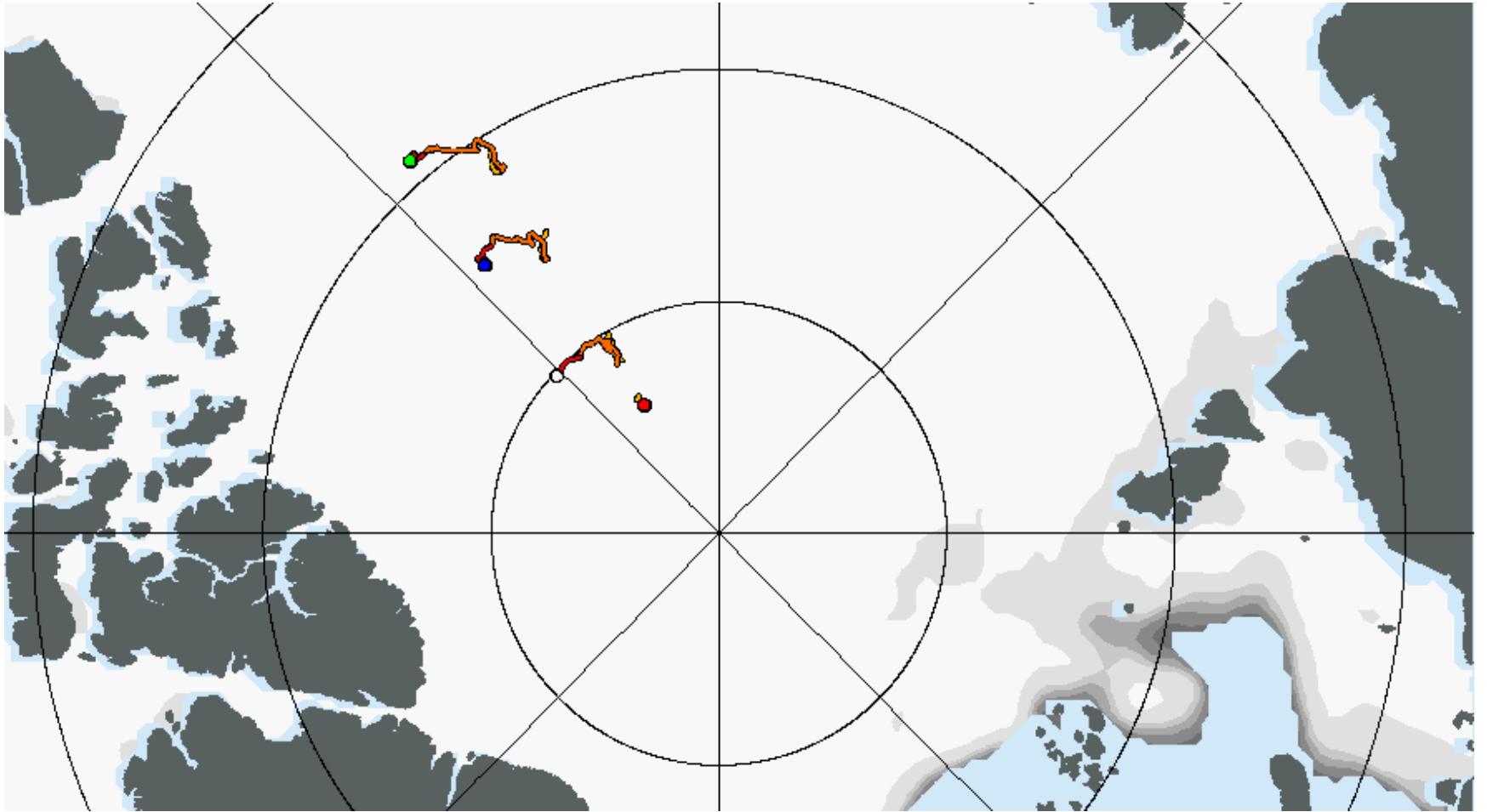
<https://www.dvidshub.net/>



Float Boat- CG,1502,CWB,IABP



<http://www.floatboat.org/>



Curt Ebbesmeyer



Beachcombers! **Alert!**
Since 1996

Home
Subscribe
Contact
Nike Shoes
Rubber Duckies
Messages in Bottles



Hazardous Flotsam
Drift Wood
Glass Balls
Sea Beans
Hockey Gloves
Container Spills
Folklore
Sea Mysteries

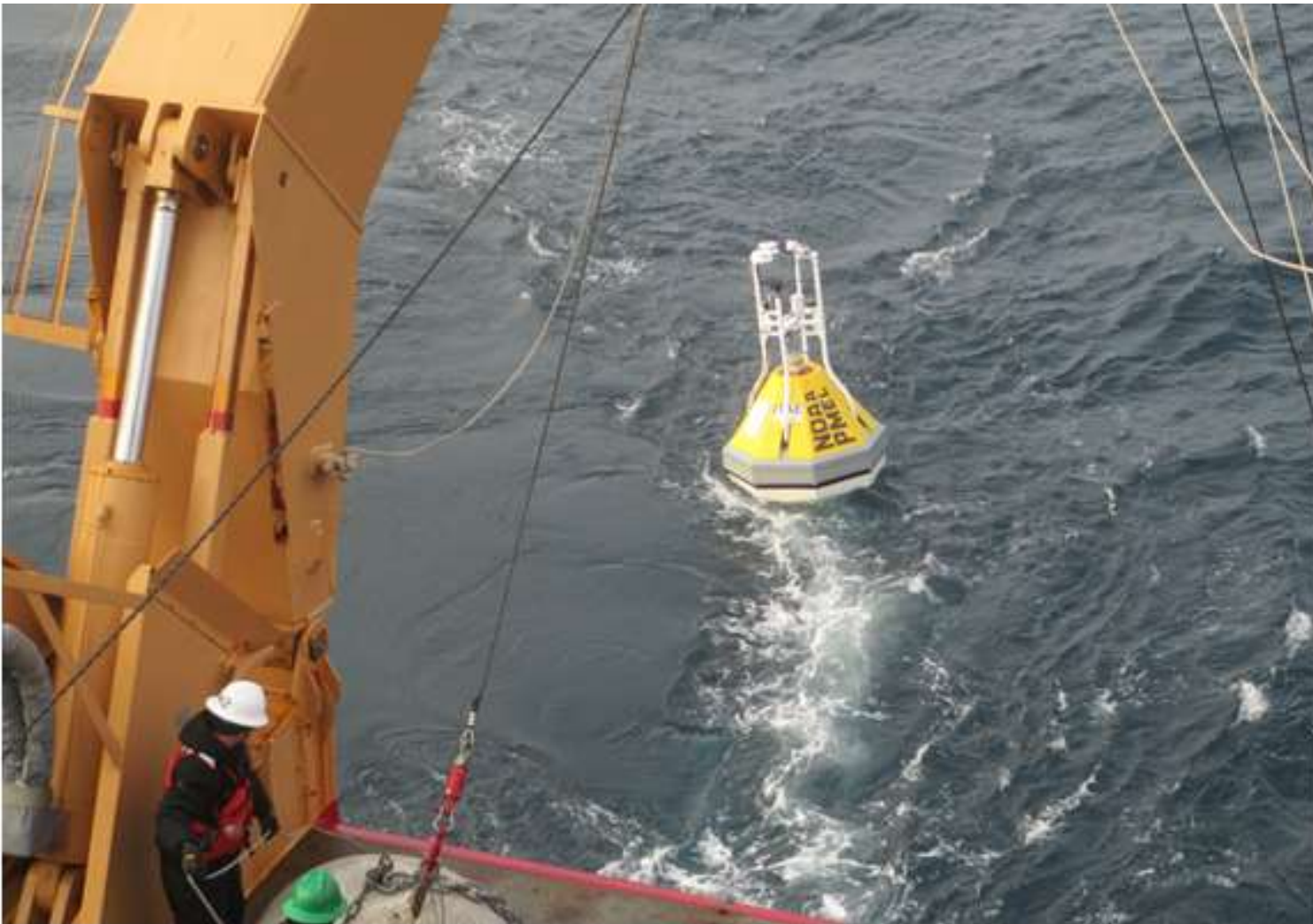


HLY1501 USCG R&D center



PMEL deployments HLY1501

Ten buoys and two autonomous surface vessels



HLY1501 USIABP deployments



2015 Healy cruise reports

- www.icefloe.net/hly1501
- www.icefloe.net/hly1502

Dry dock Jan 3 – Mar 30 (84 days)
Location TBD

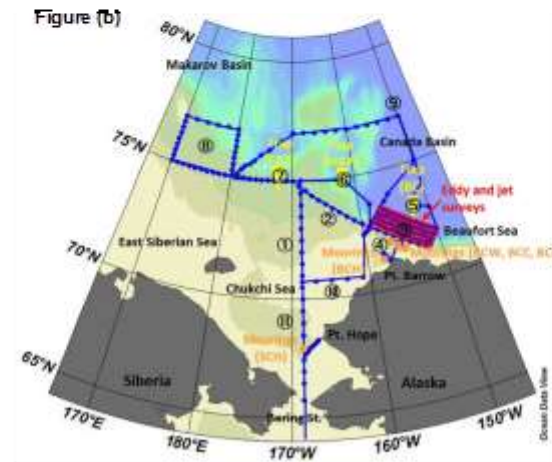
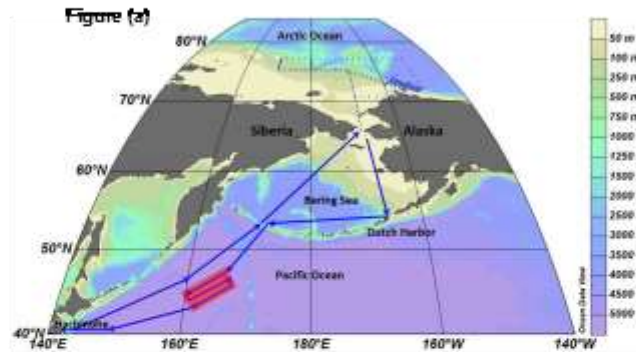


2016 Healy Schedule

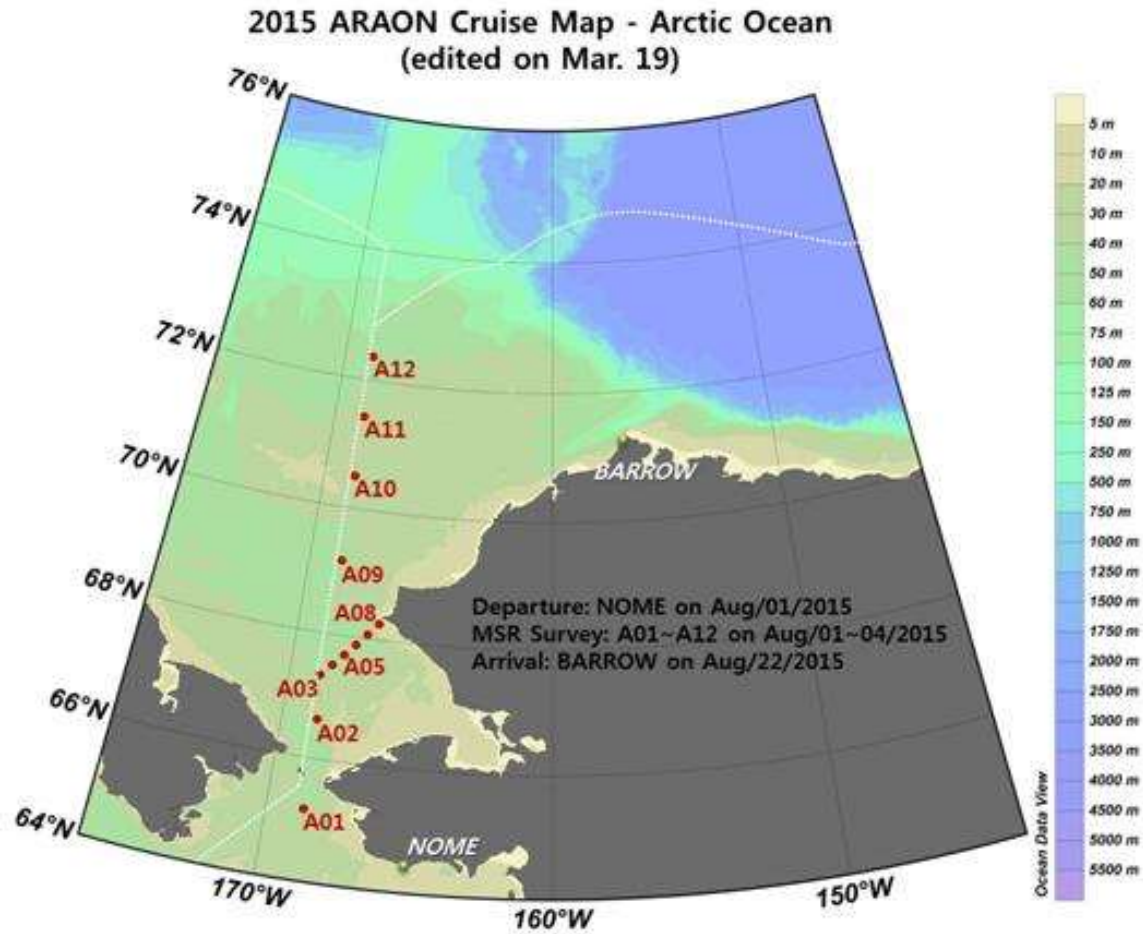
- Ashjian- 36 days – June -BOEM/MARES-
- Hopcroft- 38 days – Aug/Sep - NOAA/OE
- Worcester- 29 days- Aug/Sep – ONR/CANAPE
- Pickart- 4 days - Moorings/ NSF

Foreign ships on US Arctic EEZ

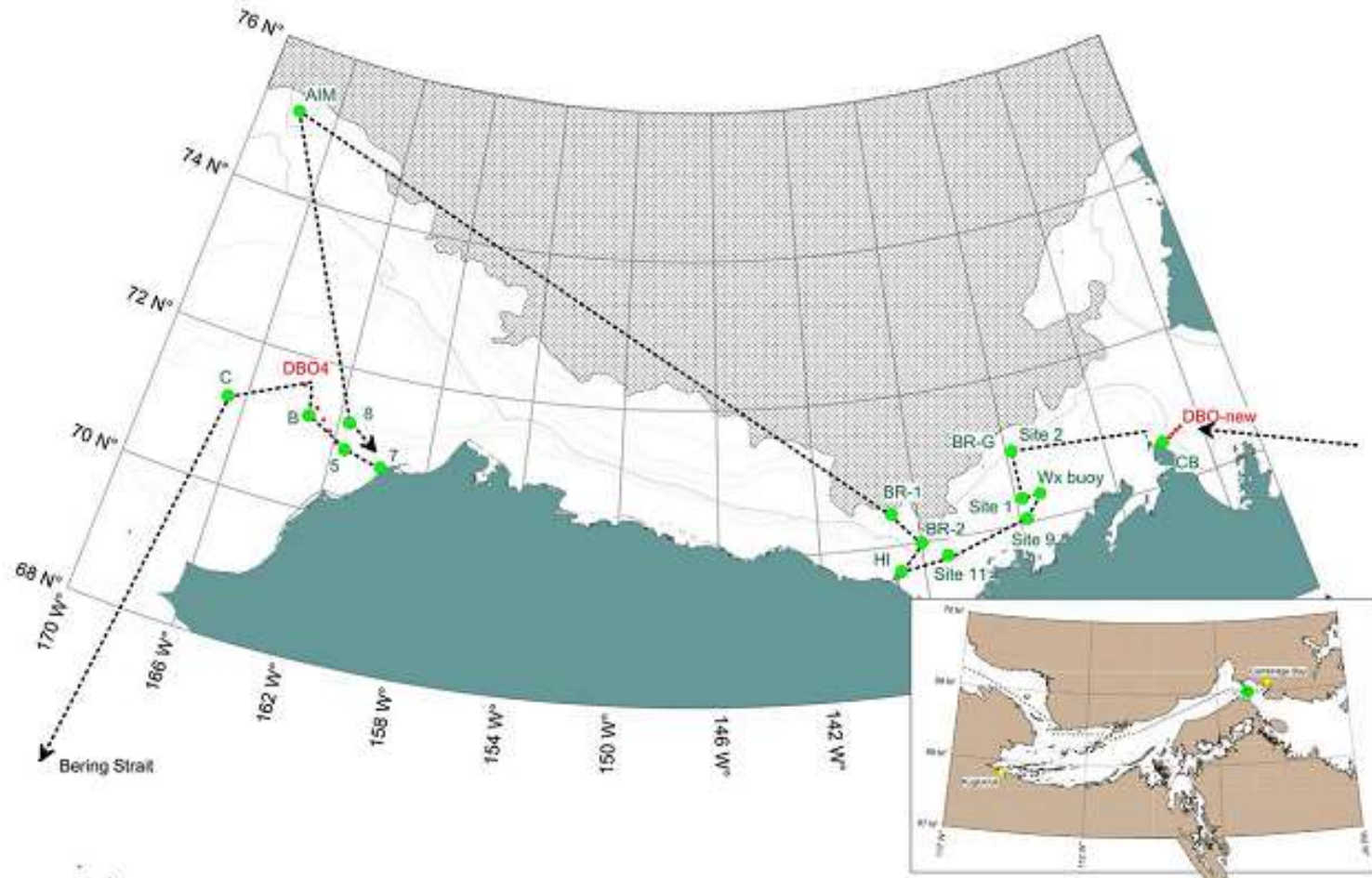
Charts showing the geographical area of the intended work, the location of sampling stations, and the tracks of survey lines



ARAON 2015



Laurier 2015

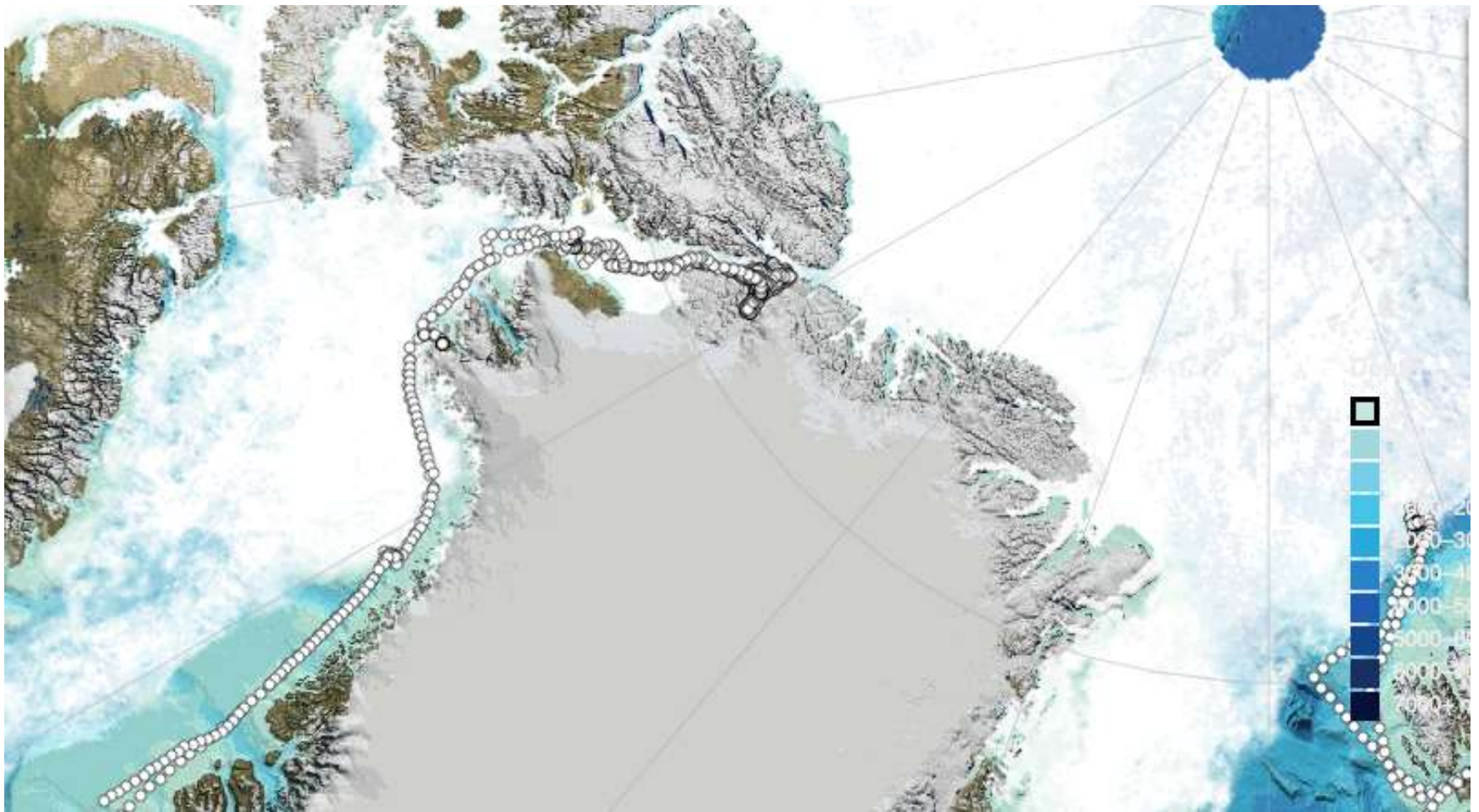


2015 Rendezvous

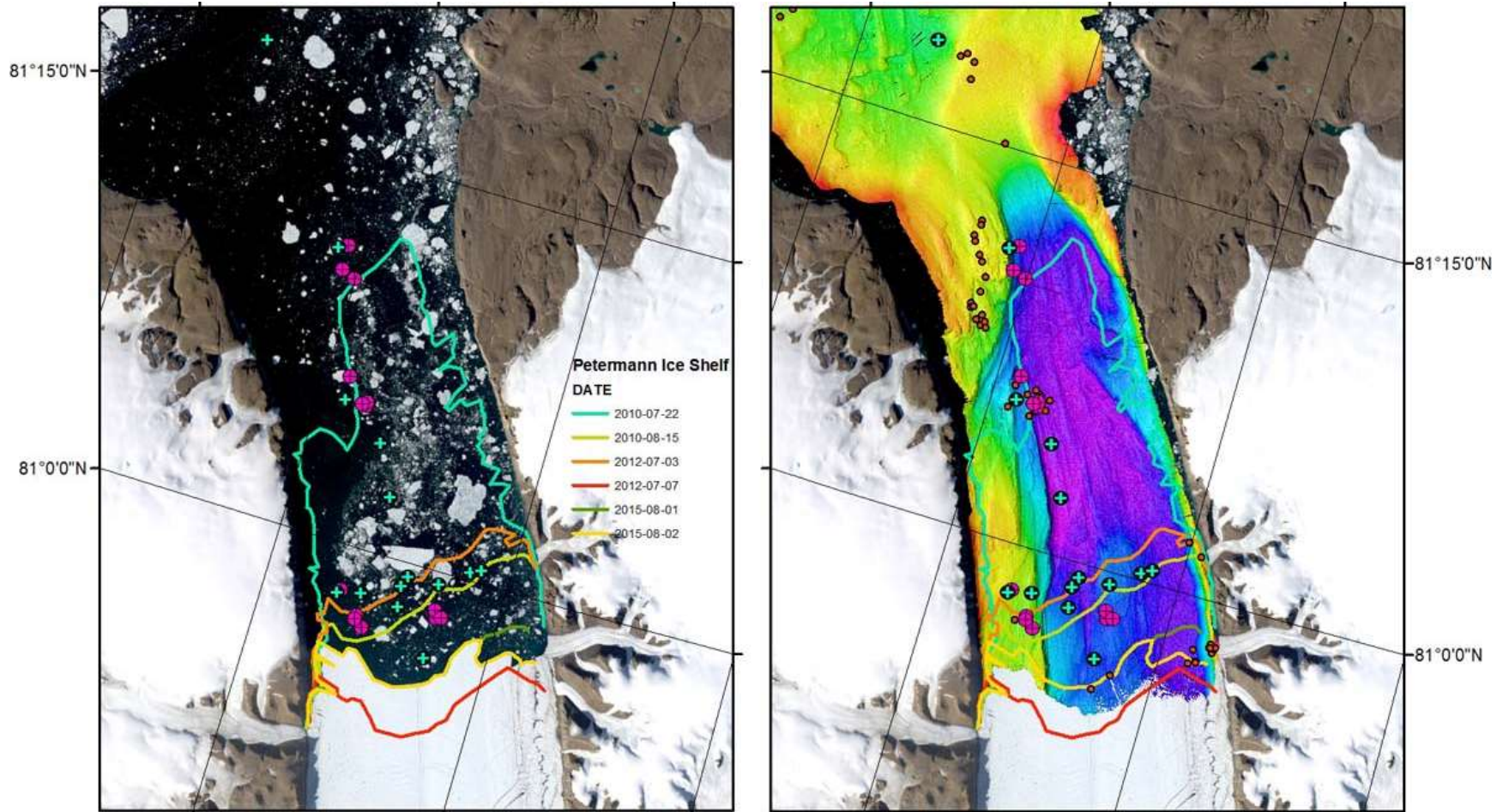


Alan Mix on Oden

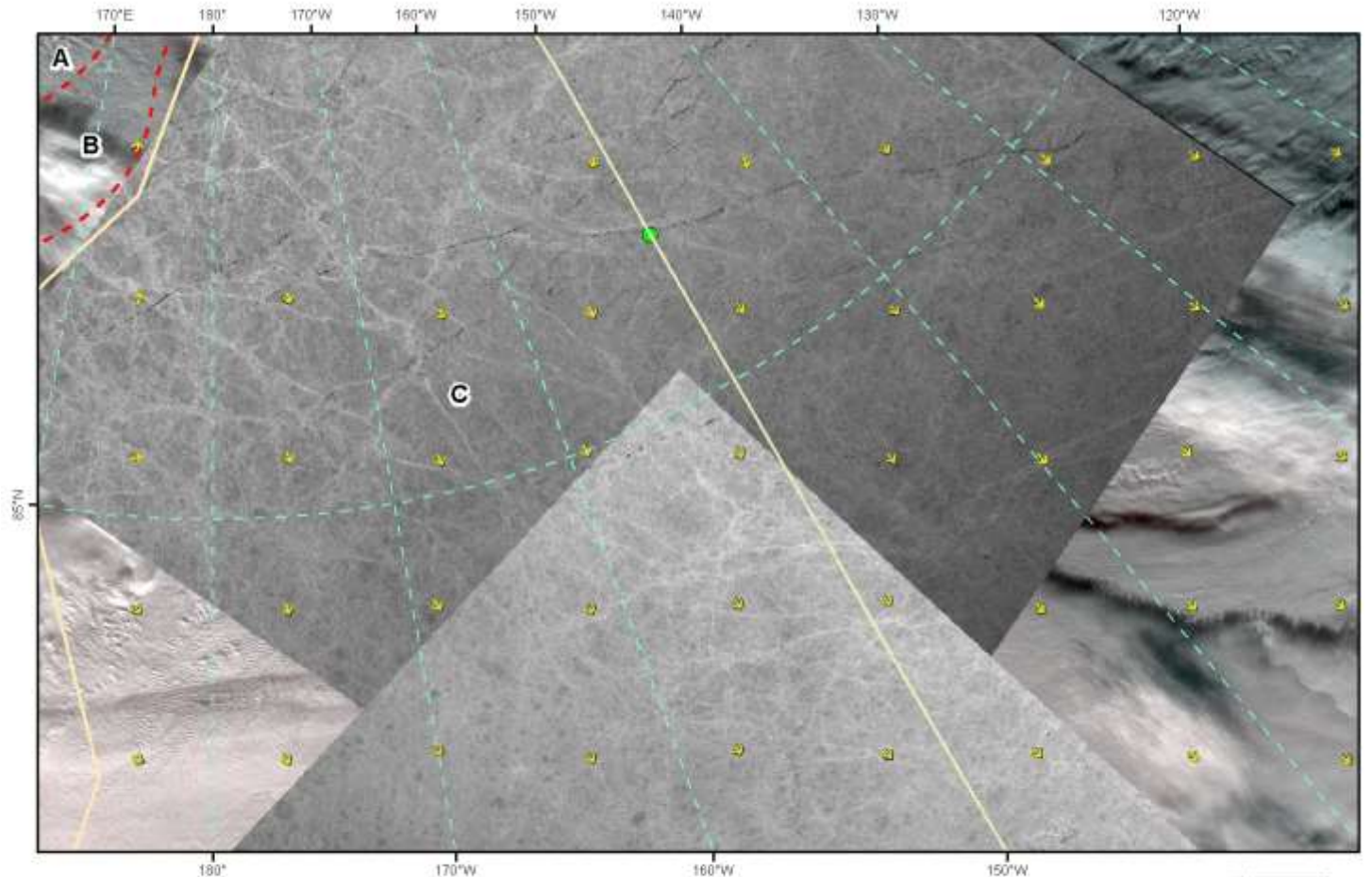
US project-foreign Vessel and EEZ(s)



Petermann Fjord



Sikuliaq Collaboration-RADARSAT that hit the target



U.S. National Ice Center
14 September 2015

● Healy 0000Z...14 SEP

Sea Ice Concentration

- A B-10/10ths FY thick
- B B-10/10ths MY and FY thick
- C B-10/10ths MY

- Analyzed
- - - Estimated
- FY First-year ice
- MY Multi-year ice

RADARSAT-2
14 SEP 0256Z
13 SEP 2015Z

MODIS
14 SEP 0035Z

NM
0 10 20

- Drift Vectors
- ↑ .5 to 1
 - ↑ 1 to 1.5
 - ↑ 1.5 to 2
 - ↑ 2 to 2.5
 - ↑ 2.5+
- Knots
- 0
 - .1 to .5