



# Harley Marine is **GREEN**

## Sustainability and Building a "Green Culture" in Marine Transportation



Safe ♦ Responsible ♦ Reliable ♦ Efficient





# Harley Marine Locations



Safe ♦ Responsible ♦ Reliable ♦ Efficient



# HMS Certifications

- ◆ **AWO RCP** – American Waterways Operators Responsible Carrier Program (Best Management Practices for our industry), certified since **1999**.
- ◆ **ISO 9001** – Standardization to ensure Consistency of Processes and Systems throughout our Operating Family of Companies, certified since **2006** with **Zero NCRs**.
- ◆ **ISM Code** – International Safety Management System, certified since **2006**
- ◆ **ISO 14001** – Environmental Management System, certified in **2008** with **Zero NCRs**.



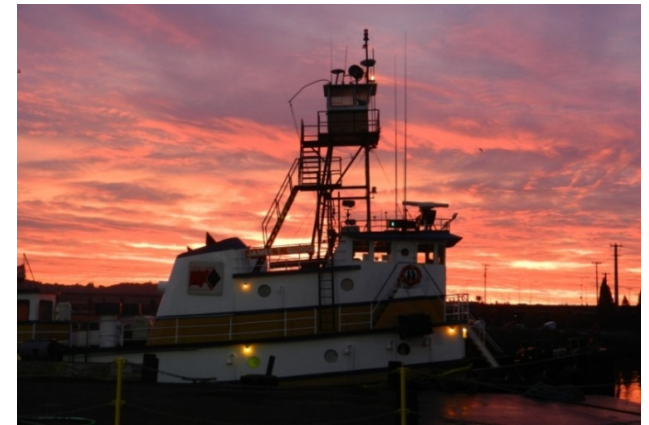


# Mission Statement

**Harley Marine Services is a customer service oriented company in the marine transportation and services business. We are quick to react to changing market conditions and customer needs.**

**HMS operational priorities are:**

- ◆ Safety of personnel
- ◆ Environmental protection
- ◆ Customer service and timely delivery of services



**We are dedicated to exceed customer expectations, protection of the environment while maintaining our obligations to our employees, shareholders, our community, and the environment.**

**HMS Goals and Philosophies:**

- ◆ Select and train the **best personnel**
- ◆ Provide the **best assets**, systems and equipment
- ◆ Focus on operational safety, health of personnel, and environmental protection, to achieve **Zero Incidents**

**Safe ◆ Responsible ◆ Reliable ◆ Efficient**



# Excerpts from the HMS Environmental Policy

## Taken from our Quality, Safety, Environmental Protection Policy

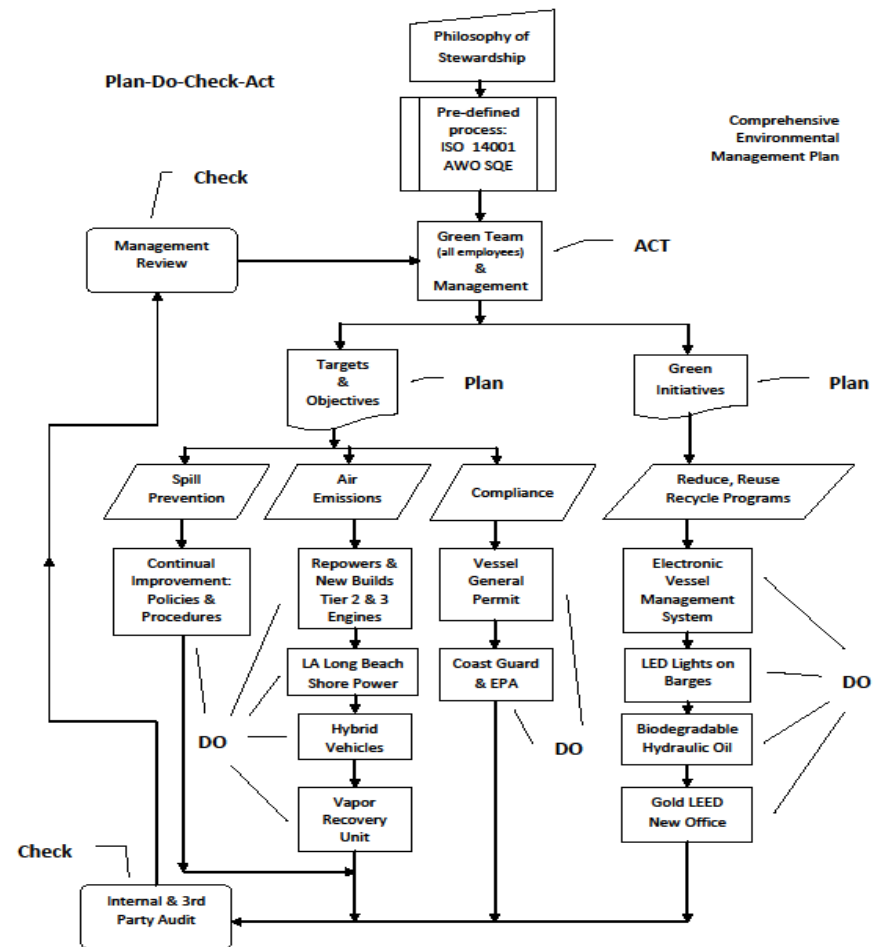
- ◆ Only employees, contractors, and vendors who are fully committed to safety, environmental protection, and compliance assurance are hired.
- ◆ Personal responsibility to work safely and show concern for the health, safety, and protection of fellow coworkers, contractors, customers, communities, and the environment are conditions for employment
- ◆ Harley Marine companies will strive to be associated with superior environmental performance as seen through the eyes of employees, customers, regulators, and the public.



# EMS - System

## Plan – Do -Check – Act

- ◆ Plan: Planning is completed by setting environmental targets and objective and green initiatives.
- ◆ Do: execute plan
- ◆ Check: Third Party Audits, Management review
- ◆ Act: Management follow-through



# External Vetting

- ◆ Equipment and documentation is routinely audited to meet the OCIMF Standards for SIRE Inspections and meets the standards of:
  - ◆ American Bureau of Shipping (ABS)
  - ◆ UK P&I Club and American Club
  - ◆ U.S. Coast Guard
  - ◆ BP
  - ◆ Shell
  - ◆ Chevron
  - ◆ ConocoPhillips
  - ◆ FAMM (Chevron)
  - ◆ Alaska Tanker Company
  - ◆ Sea River Maritime (ExxonMobil)
  - ◆ State and Local Regulatory Agencies





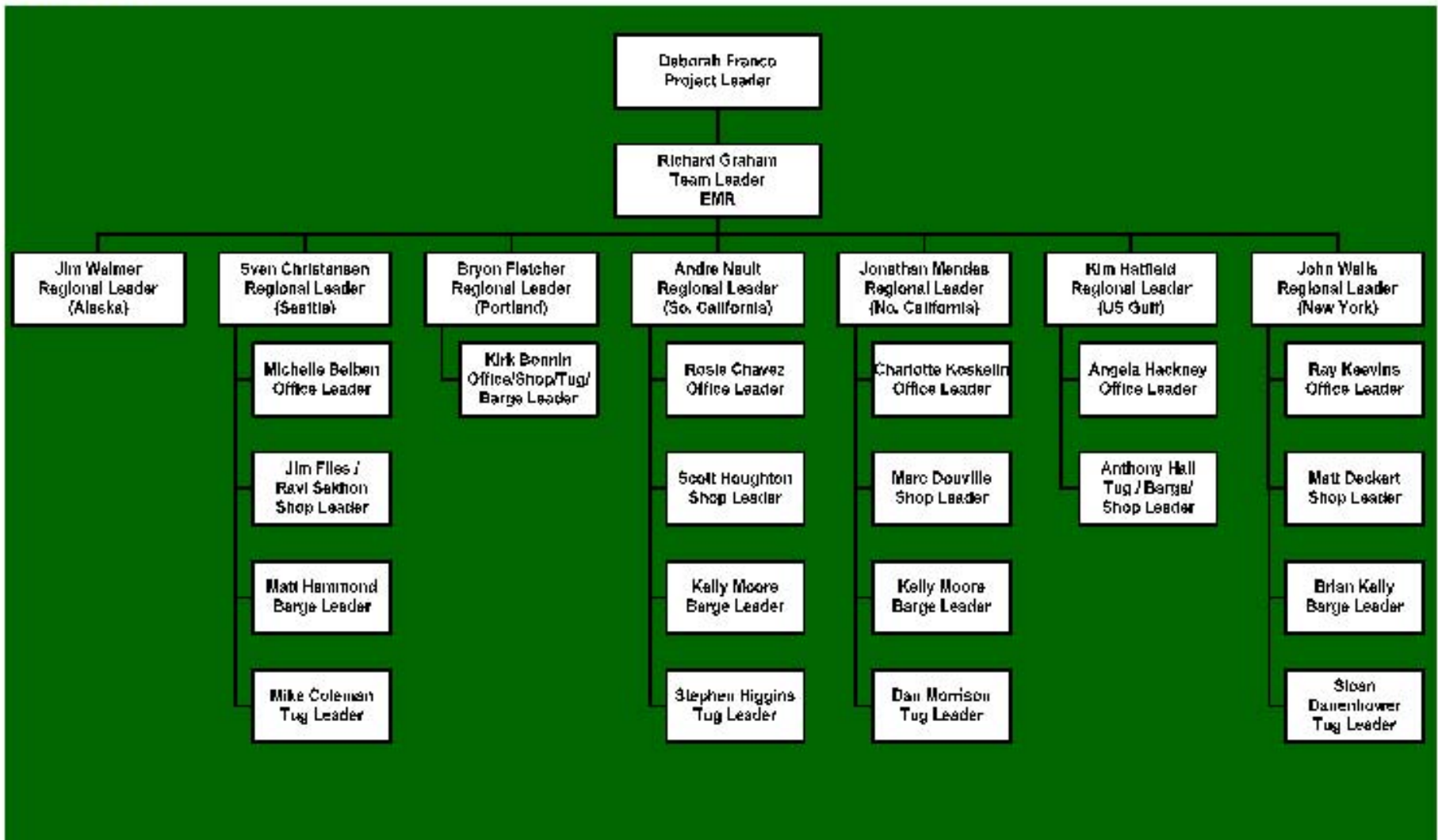
# Quality System Tools

- ◆ Internal Audit Program
- ◆ External Audits
- ◆ Incident Investigation /Root Cause Analysis/Correct and Cure
- ◆ Non-conformance/Correct and Cure
- ◆ Annual Masters Reviews
- ◆ Annual Management Reviews
- ◆ Annual QSE Objectives & Targets
- ◆ Continuous Improvement Processes
- ◆ Annual Environmental Management System Review
- ◆ Near Miss Reporting
- ◆ Lessons Learned
- ◆ Job Hazard Analysis





## Environmental Management System Program (EMSP) Team Organizational Chart



Revision: May 2011



# Re-Power(s)

Tugboat	New Engines	Completion Date
HMS Liberty	Tier 2	Jul-09
Royal Melbourne	Tier 2	Jan-10
Millennium Dawn	Tier 2	Dec-10
Tim Quigg	Tier 2	Apr-11
Millennium Falcon	Tier 2	May-11
John Quigg	Tier 3 (Field Follow)	Aug-11
CF Campbell	Tier 2	May-12
Bob Franco (new build)	Tier 3 (Field Follow)	Jun-12
Eagle	Tier 2	Dec-12
Millennium Maverick	Tier 2 (kits)	Dec-12
Z-3	Tier 2 (kits)	Dec-12
Z-4	Tier 2 (kits)	Dec-12
Z-5	Tier 2 (kits)	Dec-12



# New Build – Double Hulls



Bryant Sea	2006	27,000
Chabria Sea	2006	30,000
Chrestensen Sea	2006	30,000
Gruber Sea	2006	27,000
Olympic Spirit	2006	80,000
Richardson Sea	2006	30,000
Stoddard Sea	2006	35,000
Lovel Briere	2007	50,000
Takeuchi Sea	2007	37,200
Vijay Sea	2007	37,200
David Fanning	2008	31,500
Dugan Pearsall	2008	38,500
MGI 2100	2008	21,000
MGI 2720	2008	26,948
MGI 2721	2008	26,948
65 Roses	2009	83,800
Bernie Briere	2009	31,500
Lily Blair	2009	31,500
MGI 2331	2009	23,303
MGI 2332	2009	23,303
Nathan Schmidt	2009	31,500
Webb Moffett	2009	50,000
Anne Elizabeth	2010	31,500
JDRF 22	2010	30,955
Dale Frank Jr.	2011	50,139
Betsy Arntz	2011	31,500



# LA Shore Power

- ◆ 30% fuel reduction
- ◆ significant emission reduction
- ◆ currently 5 Shore Power ports available





# Vapor Recover Unit (VRU)



Safe ♦ Responsible ♦ Reliable ♦ Efficient



# PTSI - Insulation



Safe ♦ Responsible ♦ Reliable ♦ Efficient



# Gold LEED Certification



SEATTLE / Pier 56, 1201 Alaskan Way, #200 / Seattle, WA 98101 / 206.823.3344  
SAN FRANCISCO / 880 Market Street, #300 / San Francisco, CA 94104 / 415.966.0646  
© Mithun. All Rights Reserved / mithun.com

Duwamish Properties Harley Marine Services Headquarters Development  
JULY 23, 2010

PERSPECTIVE | MITHUN 17

Safe ♦ Responsible ♦ Reliable ♦ Efficient



# Going Paperless

-  [Existing Logs](#)
-  [New Tug Log](#)
-  [New Barge Log / Bill of Lading](#)
-  [Vessel Communication Center](#)
-  [Material Requisitions](#)
-  [Get Schedule Update](#)
-  [Get Database Update](#)
-  [Settings](#)
-  [Logout](#)



Matt Godden  
WH Version: 2.6.3



[Digitally Sign Tug Log](#)

Tug Log - 01/26/2011				
Company	Tug	Barge	Master	Status
Harley Marine New York	Alyssa Ann		Matt Godden	Open

**Maintenance Check-Off List (33 CFR 164) / VGP**

**Maintenance**

VHF Radio   
  Engine Alarms   
  Navigation Lights   
  Publications Updated   
  Gyro   
  Radar(s)   
  NTMS  
 Search Light(s)   
 Charts Updated   
 Joysticks/Wheel   
 Depth Indicator   
 Thrust Angle   
 Compass   
 Bilge Alarm  
 Steering System   
 GPS   
 General Alarm   
 Whistle(s)   
 Towlines/Wires Inspected   
 Engine Gauges   
 Auto Pilot

**VGP**

The Master of the vessel certifies that the visual monitoring of the water around the vessel and visual inspection of the towing vessel and/or barges in tow has been done to ensure that all requirements of the VGP have been met.

Were any deficiencies noted?

If yes, were the Corrective actions completed?

**Event Log**

**Add Event**

Start Time	Stop Time	Job #	Remark	Coding	Channel
<input type="text"/>	<input type="text"/>	<input type="text"/>	<input type="text"/>	<input type="text"/>	<input type="text"/>

**Existing Event**

Start Time	Stop Time	Job #	Remark	Coding	Channel
14:59	14:59		Test	Material Requisition	

 [Print View](#)





# Emergency Preparedness & Response

- ◆ Full PREP compliance
- ◆ In House Spill Management Team with ongoing Incident Command System (ICS) Training
- ◆ All bunkering operations in Washington State are pre-boomed, drastically reducing the possibility of environmental damage in the event of a spill
- ◆ Drill with all regions of USCG, State Government Agencies, and Oil Spill Response Contractors



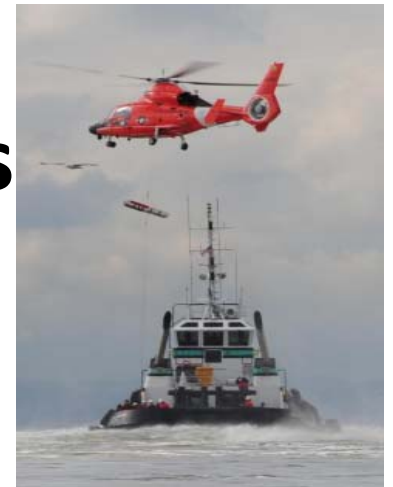
# Summary of Initiatives

## Environmental Initiatives include:

- ◆ **Exceeding compliance** with local, state and federal environmental regulations and requirements.
- ◆ Conducted energy audits on our vessels and developed an **Energy Management Plan**.
- ◆ Identify, eliminate and substitute **hazardous materials**.
- ◆ **Increased** environmental awareness and training.
- ◆ Reduced the amount of waste generated by implementing a **company-wide recycling program**.
- ◆ **Reduced** the amount of paper used.
- ◆ Continually replace our barges with new best available technology **double hulls in all ports** we operate in.

# Benefits of an EMS

- **Reduced raw material/resource use**
- **Reduced energy consumption**
- **Improved process efficiency**
- **Reduced waste generation and disposal costs**
- **Utilization of recoverable resources**





# Building a Green Culture

The Human Element:

Building a green culture at Harley Marine is the manifestation of an effective EMS.



*As the Holiday Season is upon us, we find ourselves reflecting on the past year and on those who have helped to shape our business in a most significant way. We value our relationship with you and look forward to working with you in the year to come. We wish you a very happy Holiday Season and a New Year filled with peace and prosperity.*

**HARLEY MARINE SERVICES**

Content on this page requires a newer version of Adobe Flash Player.

Safe ♦ Responsible ♦ Reliable ♦ Efficient



# Harley Marine is **GREEN**



Safe ♦ Responsible ♦ Reliable ♦ Efficient

