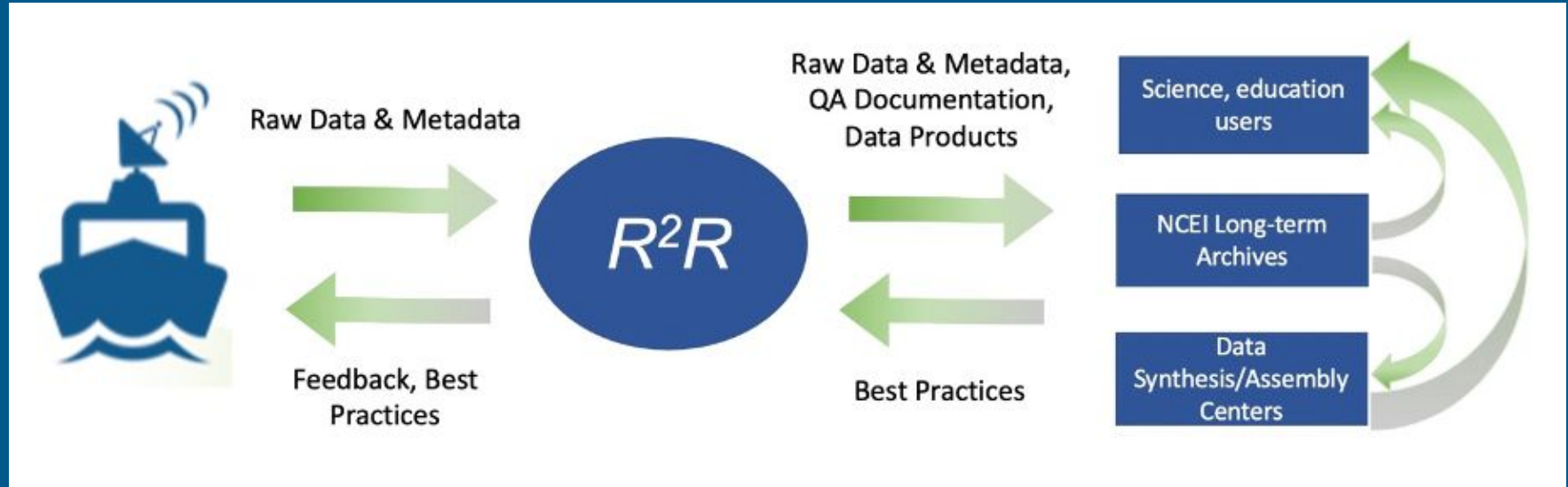


# Rolling Deck to Repository (R2R)

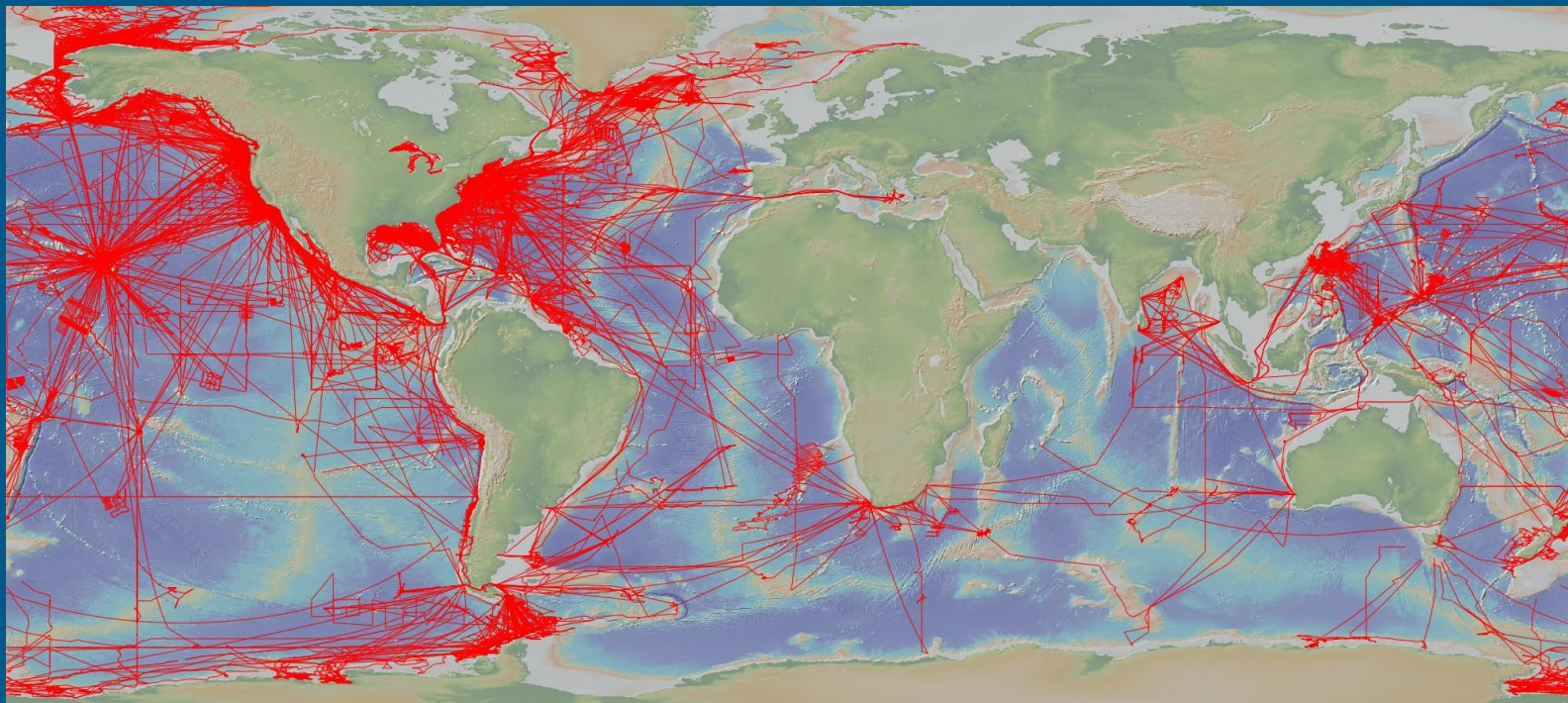
## Current Status and New Developments

\*E. Miller, S. O'Hara, D. Clark, R. Hudak, S. Smith, K. Stocks, L. Stolp, R. Uribe, V. Ferrini, S. Carbotte  
LDEO, FSU, SIO, WHOI  
\*presenter

# Our Mission



# Data You Contribute Circles the Globe!



R2R makes data available to all

# Data Transfer

Free For R2R  
Data Pull

Quick Transfer  
Time

Secure Transfer

Resumes Interrupted  
Transfers

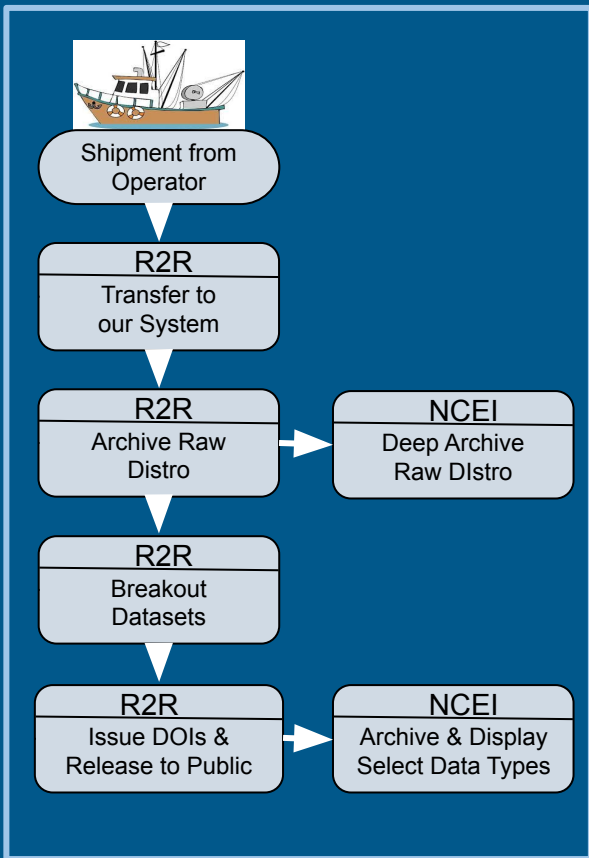
Allows Operator to  
Push Data

Transfer of  
Large Data Sets

No System  
Config by IT

Globus							
SFTP SSH/rsync							
Cloud Platforms							
Physical Drive							

# Raw Data Breakout



# QA Documentation

Rating	Fileset ID	Dataset
	149604	Singlebeam Sonar <i>Knudsen 3260</i>
	149602	GNSS <i>CCTech C-Nav 3050</i>
	149607	Expendable Probe <i>Sippican MK12</i>

ADCP, CTD, xprobe,  
gravimeter, magnetometer,  
multibeam, navigation,  
SAMOS, singlebeam

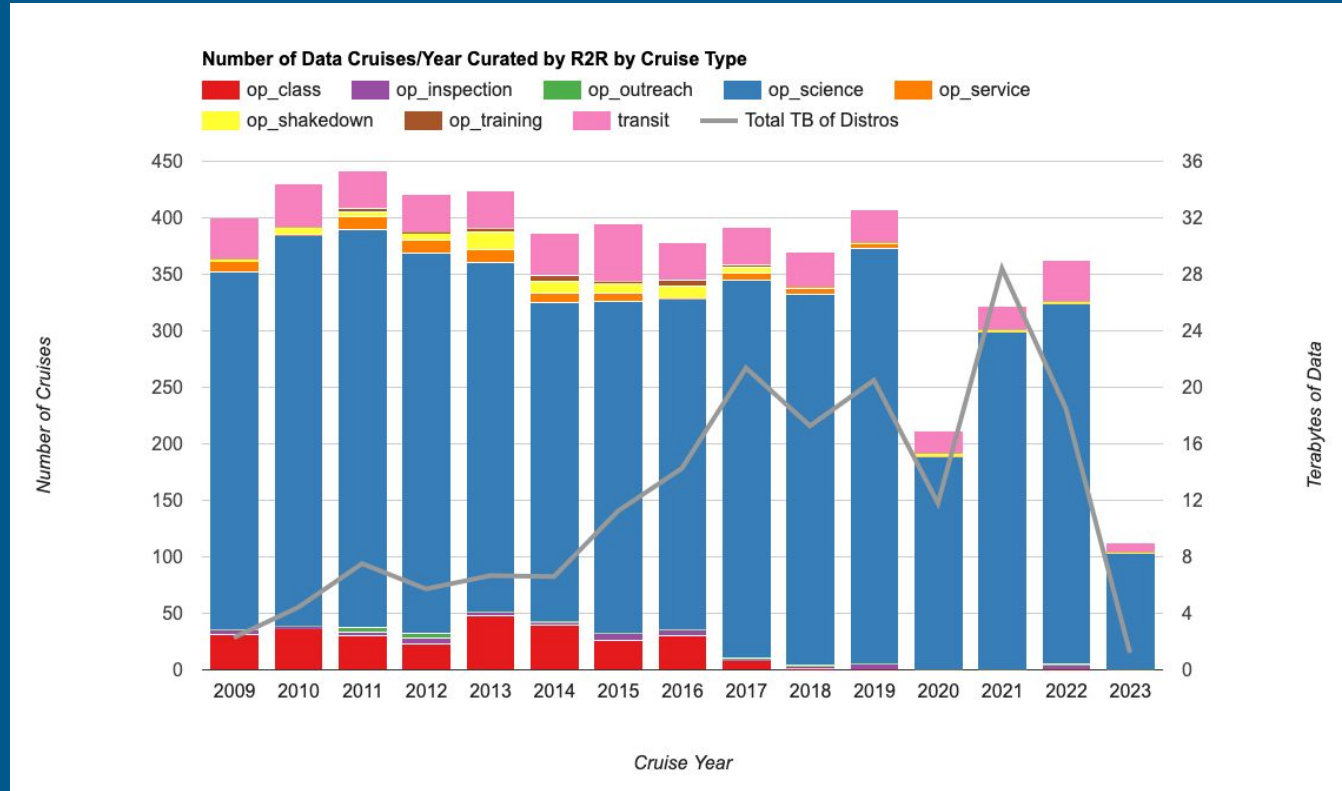
# Product Generation

Including MET and TSG  
data (in real time),  
navigation, trackline  
geophysics and CTD

DATA TYPE	FORMAT
Bathymetry	<a href="#">r2rbathy_geocsv</a>
CTD	seasoft-proc
Elog	<a href="#">r2relog</a>
Expendableprobe	<a href="#">r2rxprobe_geocsv</a>
Gravity	<a href="#">r2rgrav_geocsv</a>
Navigation	<a href="#">r2rnav_geocsv</a>

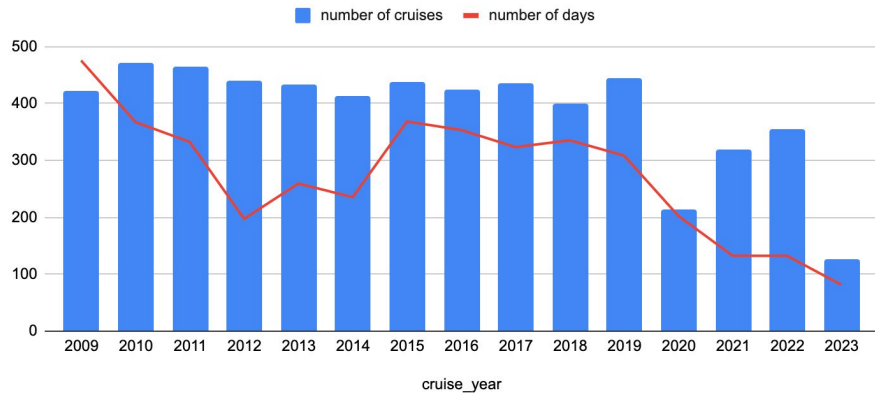


# Cruises & Data Volumes at R2R

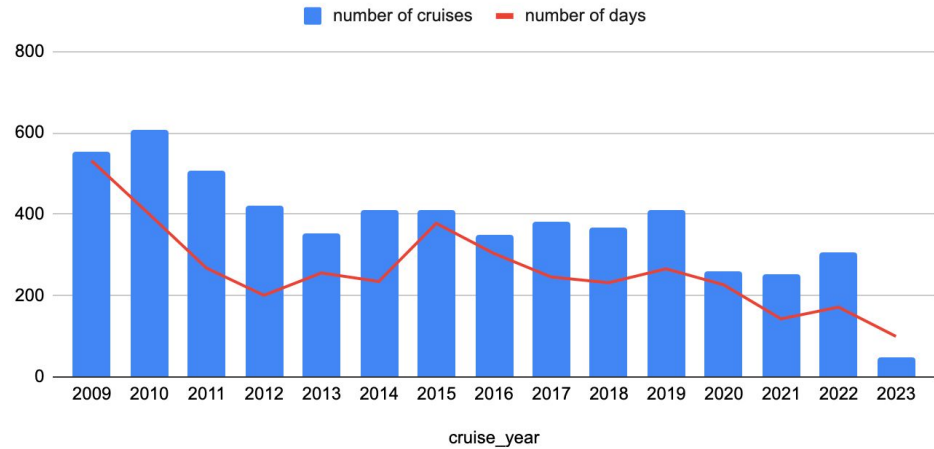


# Arrival of Data to R2R Over Time

Number of days between end of cruise and ingestion of metadata into R2R



Number of days between end of cruise and arrival of disro at R2R



# All historical USAP data is now available at R2R!

## *Gould*

Data since 1997  
271 cruises  
&  
2626 data sets  
added to catalog



## *Palmer*

Data since 1992  
270 cruises  
&  
1871 data sets  
added to catalog

*Zee Evans, NSF*



# Website Improvements



R2R

ROLLING DECK TO REPOSITORY

[SEARCH](#) [BROWSE VESSELS](#) [DATA TYPES & PRODUCTS](#) [COMMUNITY](#) [ABOUT R2R](#)

Search cruise... 

Search device... 

Search keyword... 

[QA Dashboard](#)

[Operator Dashboard](#)

[API](#)

[Publications](#)

[Best Practices](#)

## Best Practices

[Home](#) / [Best Practices](#)

R2R encourages the use of community best practices in instrument operation and data collection. Below are best practice documents and efforts recommended by R2R. Please feel free to [contact us](#) with questions, and to let us know if you are aware of additional practices to include.

### R2R-Developed Best Practices

[Cruise Data Directory Structure](#)

[Navigation Data Collection \(PDF\)](#)

### Community Best Practices

[Sensor Coordinate Systems](#)

[Underway Transmissometer Best Practices \(PDF\)](#)

### Best Practice Development Efforts

You are welcome to reach out to the leads if you are interested in participating.

Flow Through Best Practice: led by [Shawn Smith](#)

CTD Best Practice: co-led by [Laura Stolp](#) and [Rebecca Hudak](#)

EK-80 Best Practice: co-led by [Rebecca Hudak](#) and [Kristin Beem](#)

R2R encourages use of the [Ocean Best Practices System \(OBPS\)](#) as a community repository for guidance around vessel-based data collection.

# Device Documentation

Met Station	<a href="#">SIO MET-System</a>	<a href="#">10.7284/145688</a>	☰ ⬇
Met Station	<a href="#">SIO MET-System [Documentation]</a>	<a href="#">10.7284/145706</a>	☰ ⬇

We're updating our workflow to handle downloadable documentation harvested from the cruise distros for specific device types

We're hoping to make more of these documents available to users of the website and API services

# Questions/Comments/Suggestions?

 COLUMBIA CLIMATE SCHOOL  
LAMONT-DOHERTY EARTH OBSERVATORY



 SCRIPPS INSTITUTION OF  
OCEANOGRAPHY

Providing access to and ensuring  
the preservation of national  
oceanographic research data.

Contact us:

- Email [info@rvdata.us](mailto:info@rvdata.us)
- Visit [www.rvdata.us](http://www.rvdata.us)

