



ECWP

East Coast Winch Pool Update
RVTEC 2023



WOODS HOLE
OCEANOGRAPHIC
INSTITUTION





1

Personnel

The people behind the magic

People of the ECWP

Brian Guest

Bookie



System Maintenance

Jamie Haley

Wrenchy



Joshua Eaton

Brainy





2

Assets

What we've got

| Winches

Winches



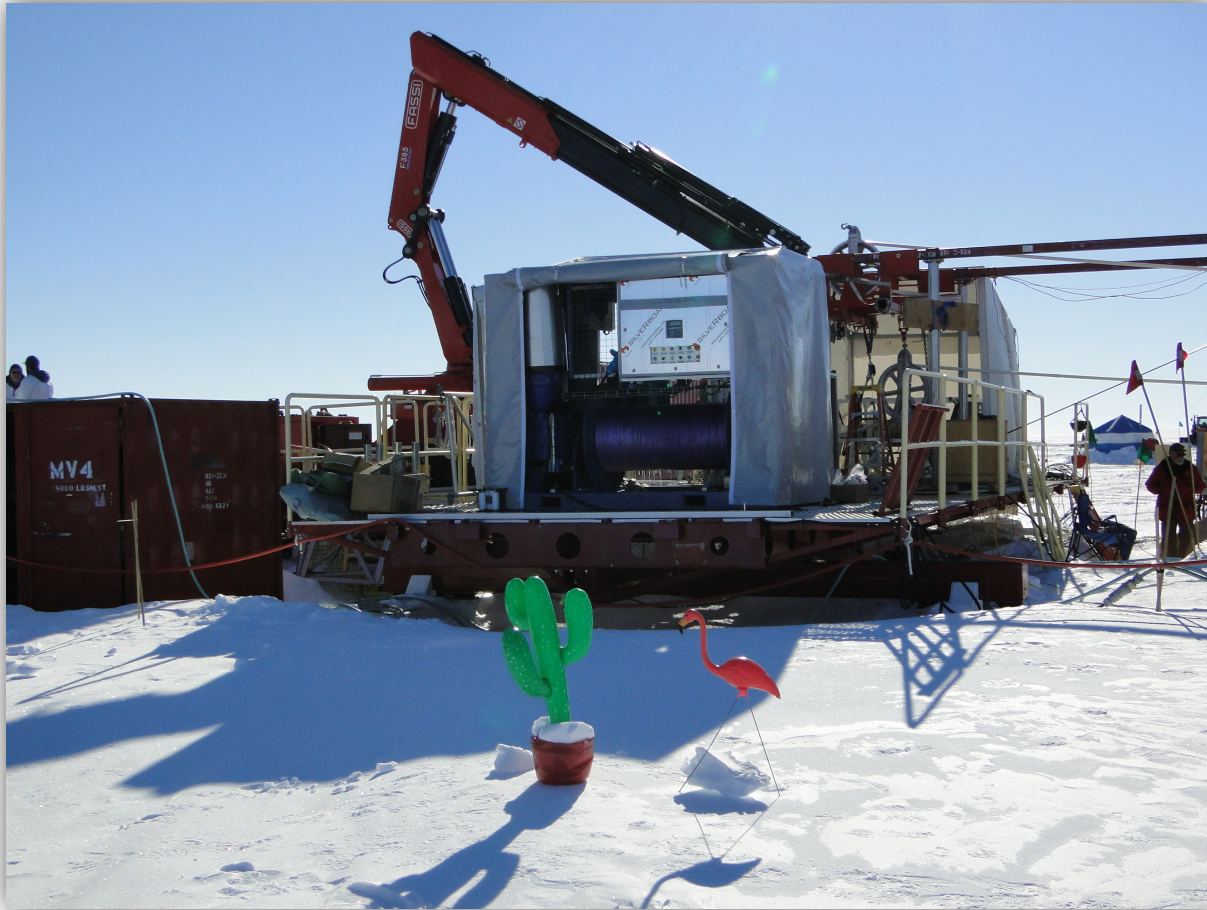
Moe
MASH2K-1

Winches



Larry
MASH2K-2

Winches



Curly
MASH4K-1

Winches



Shemp
MASH4K-2

Winches



Gloria
SPRE-2530 S

Winches



Godzilla SPRE-3464

| Winches



Monk
Dynacon 1007

Winches



Donnie
Dynacon 10030

Winches



Marie Dynacon 10030

Winches



Joe
SPRE- 2648

Winches



Cletus & Cooter SD-70

| Winches



Jed

SeaMac

Winches



Jay Jay
IOS TM

Sheaves

½" Harken
Block

0.322 Harken
Block

0.322 Trace
Metal Block

36" 0.681 Block

Wide Groove
Metering Block

¼" Trace Metal
Block





Other Assets

2 MRUs

Electrical
Sliprings

Fiber Optic
Rotary Joints

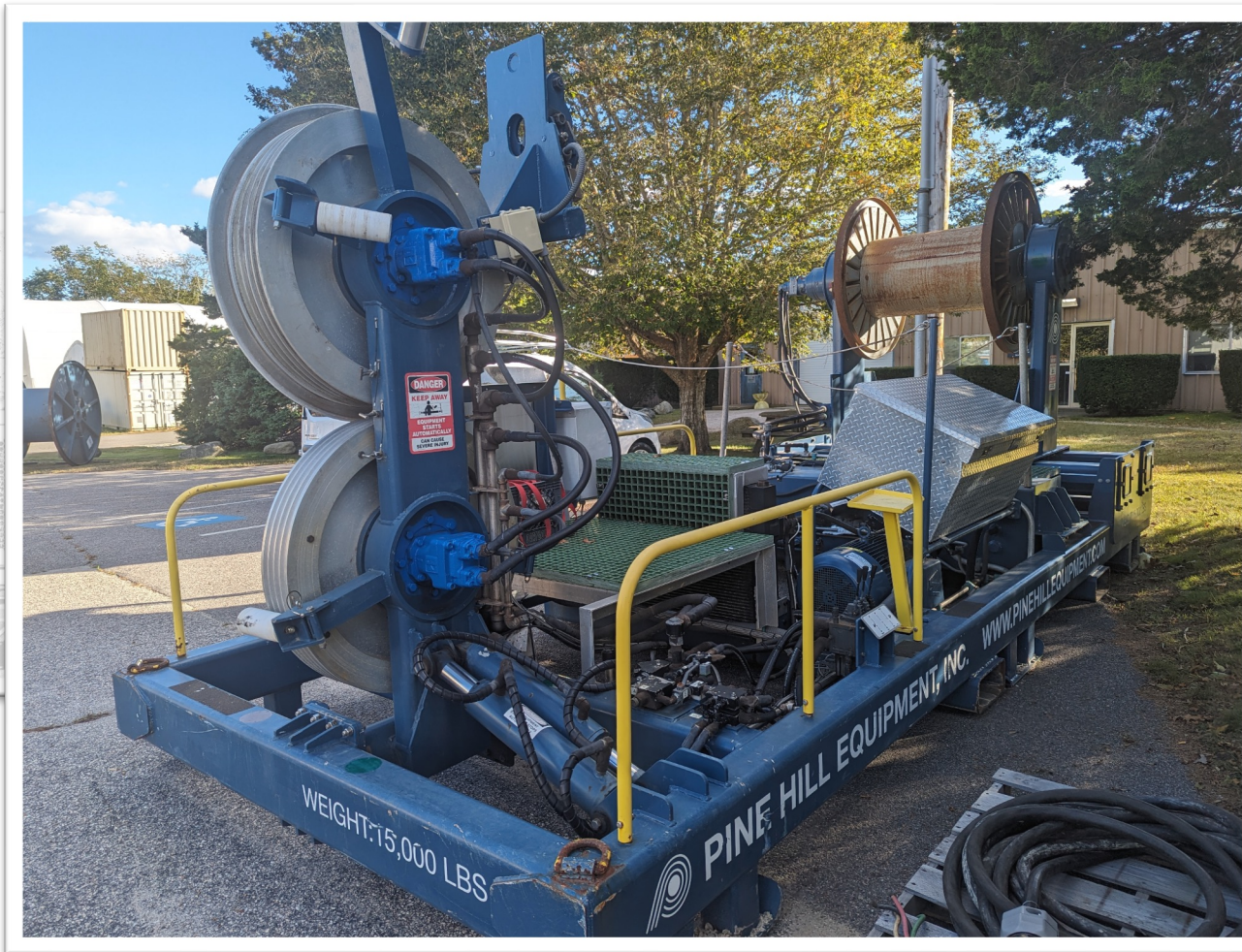
Load Cells

220 to 480
Transformer

Winch Turn
Tables

Tensioners

Pine Hill



Tensioners

Barney



Tensioners

Leitheiser







3

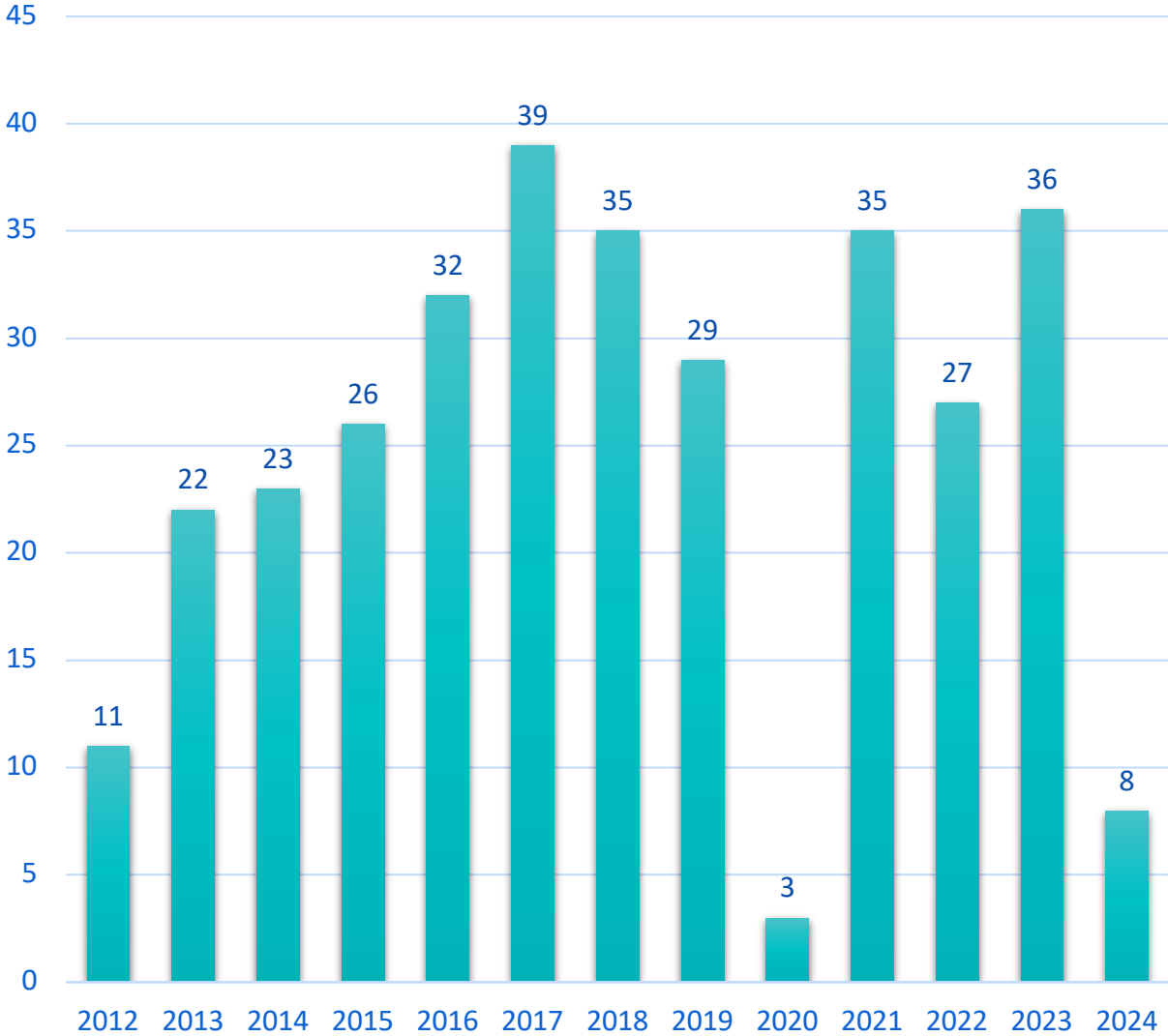
Usage and Shipping

Where our stuff goes to and from

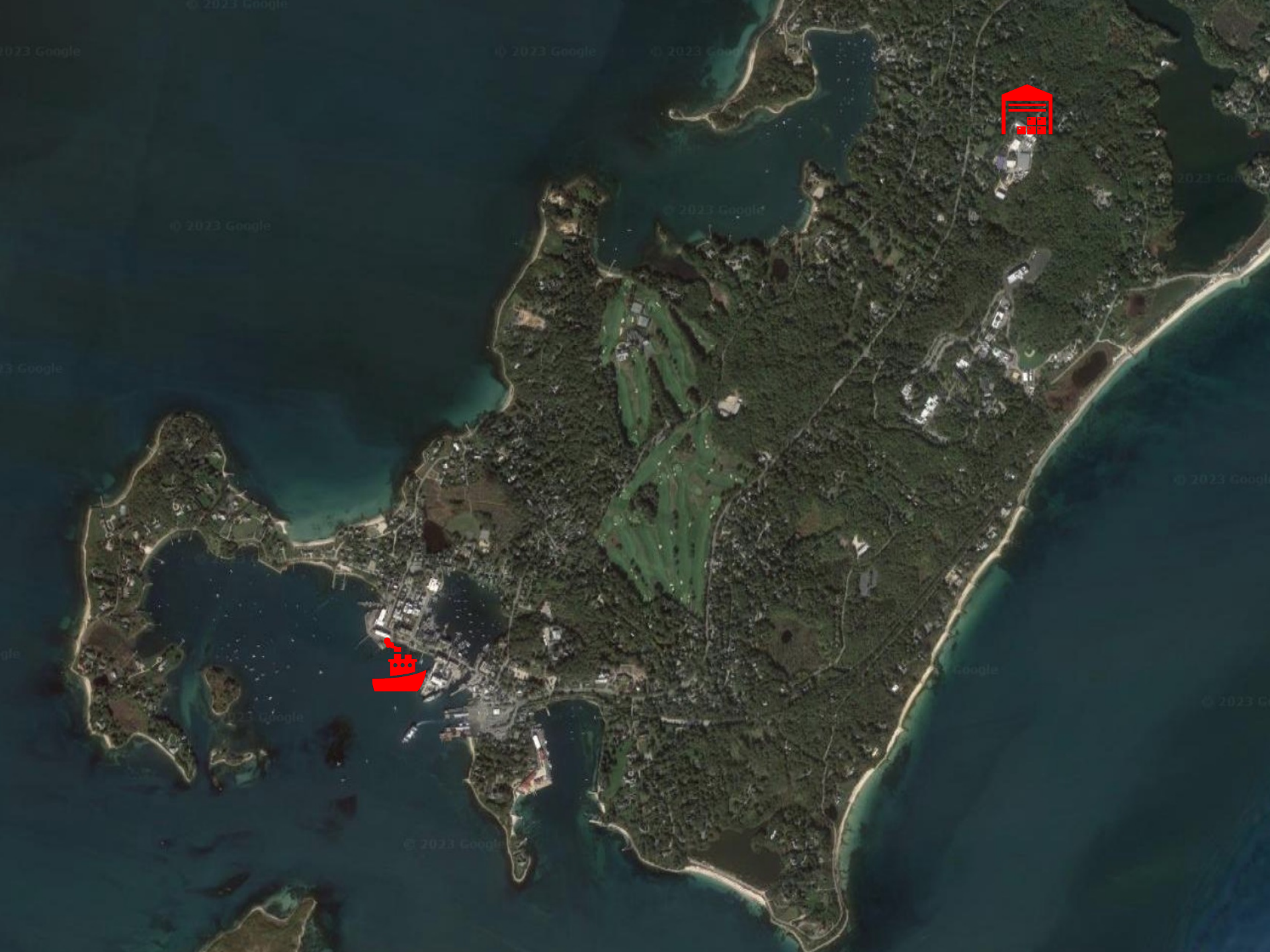
Fulfilled Winch Requests

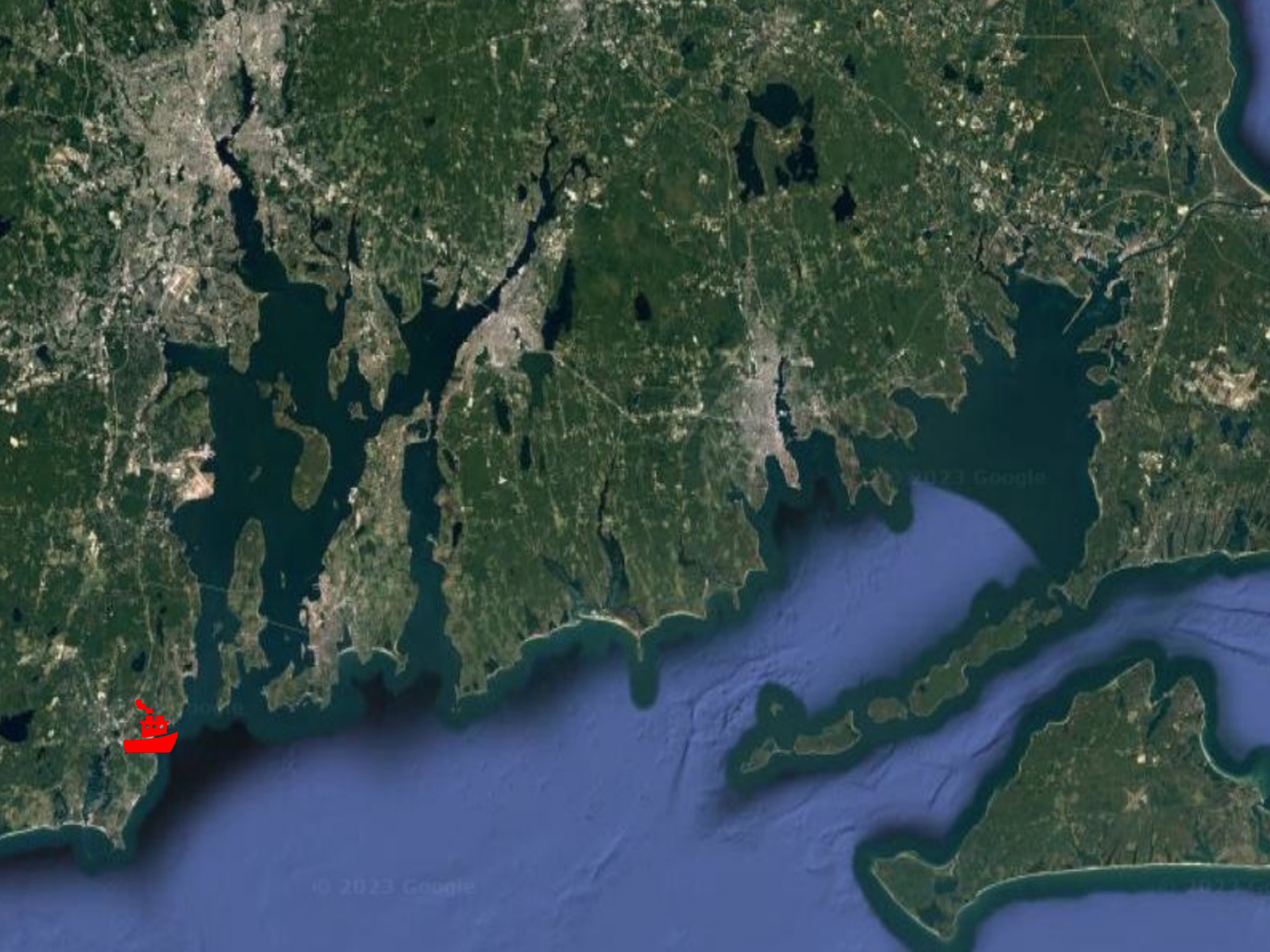
Only 1 winch has not left the shop this year: Donnie

This year has felt busier than past years



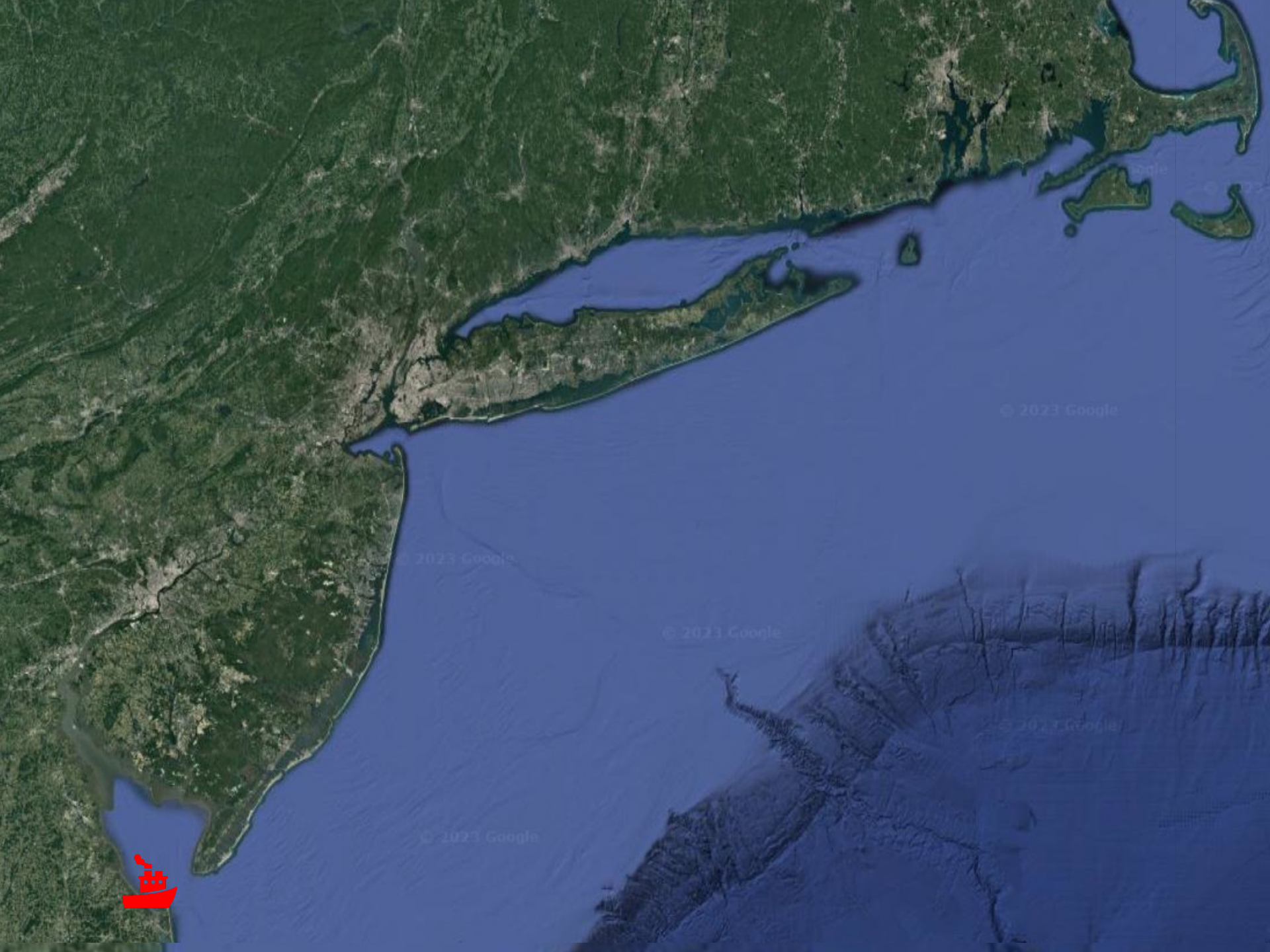
| Where have we shipped to?





© 2023 Google

© 2023 Google



Google

© 2023 Google

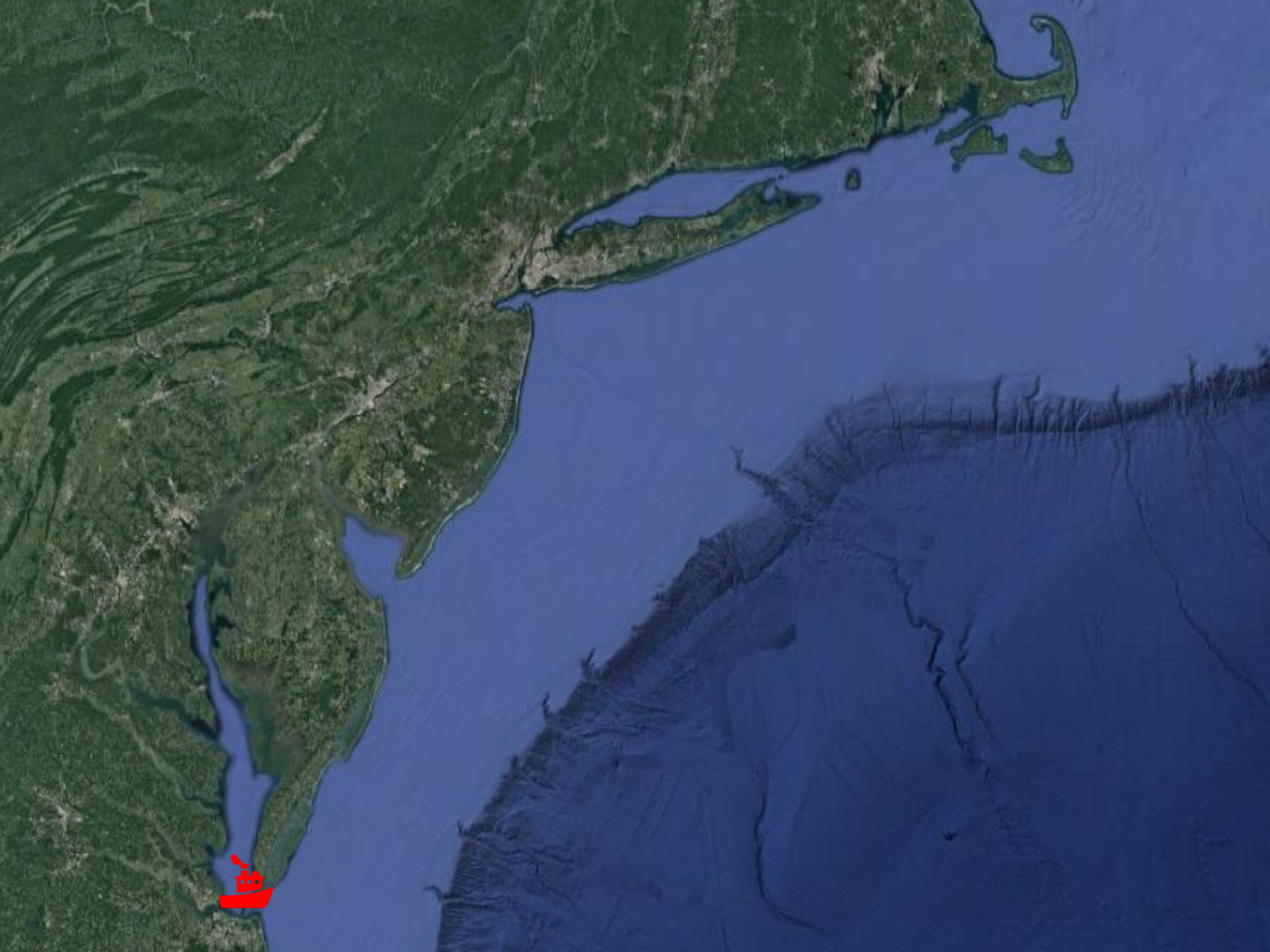
© 2023 Google

© 2023 Google

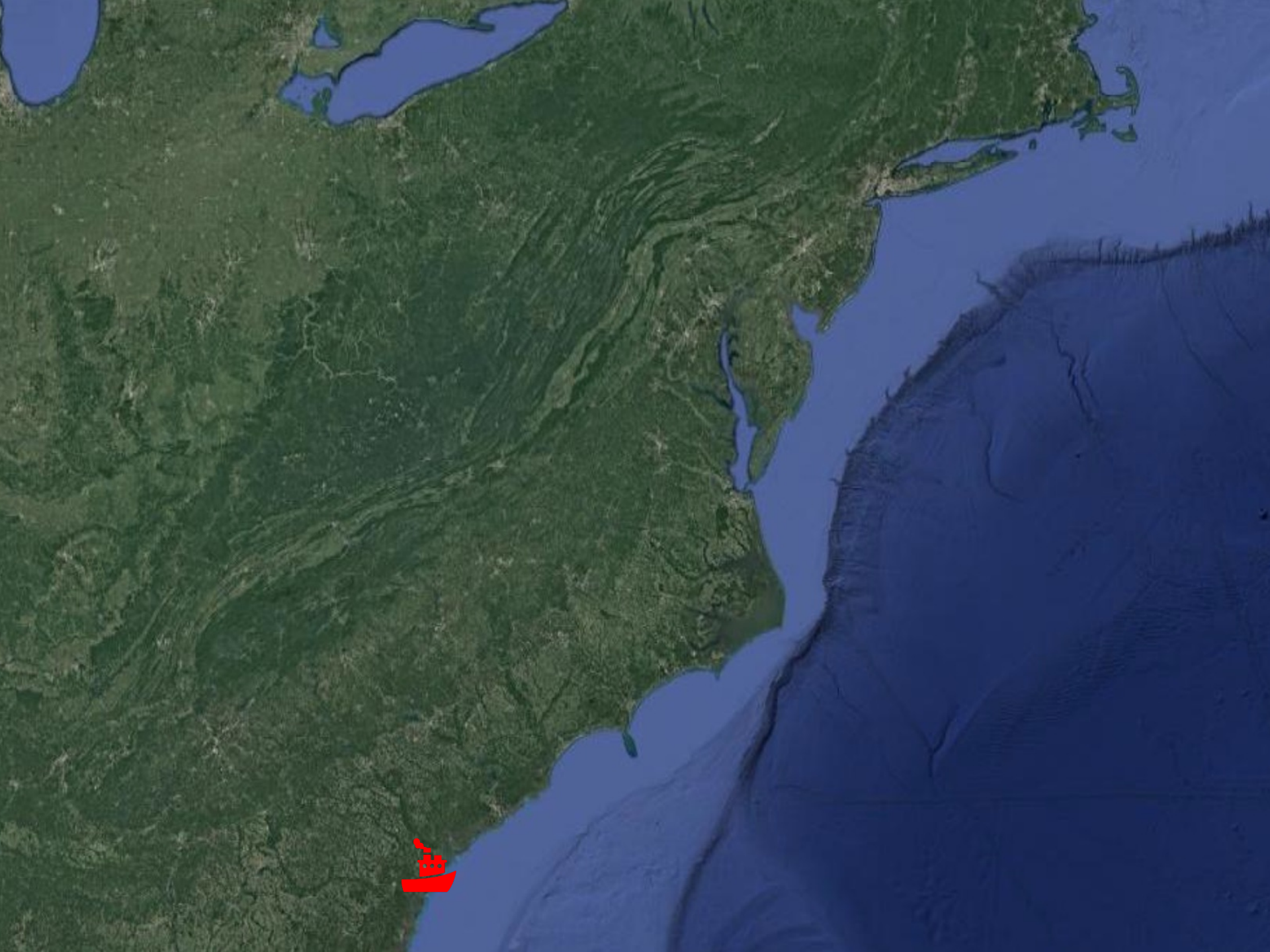
© 2023 Google

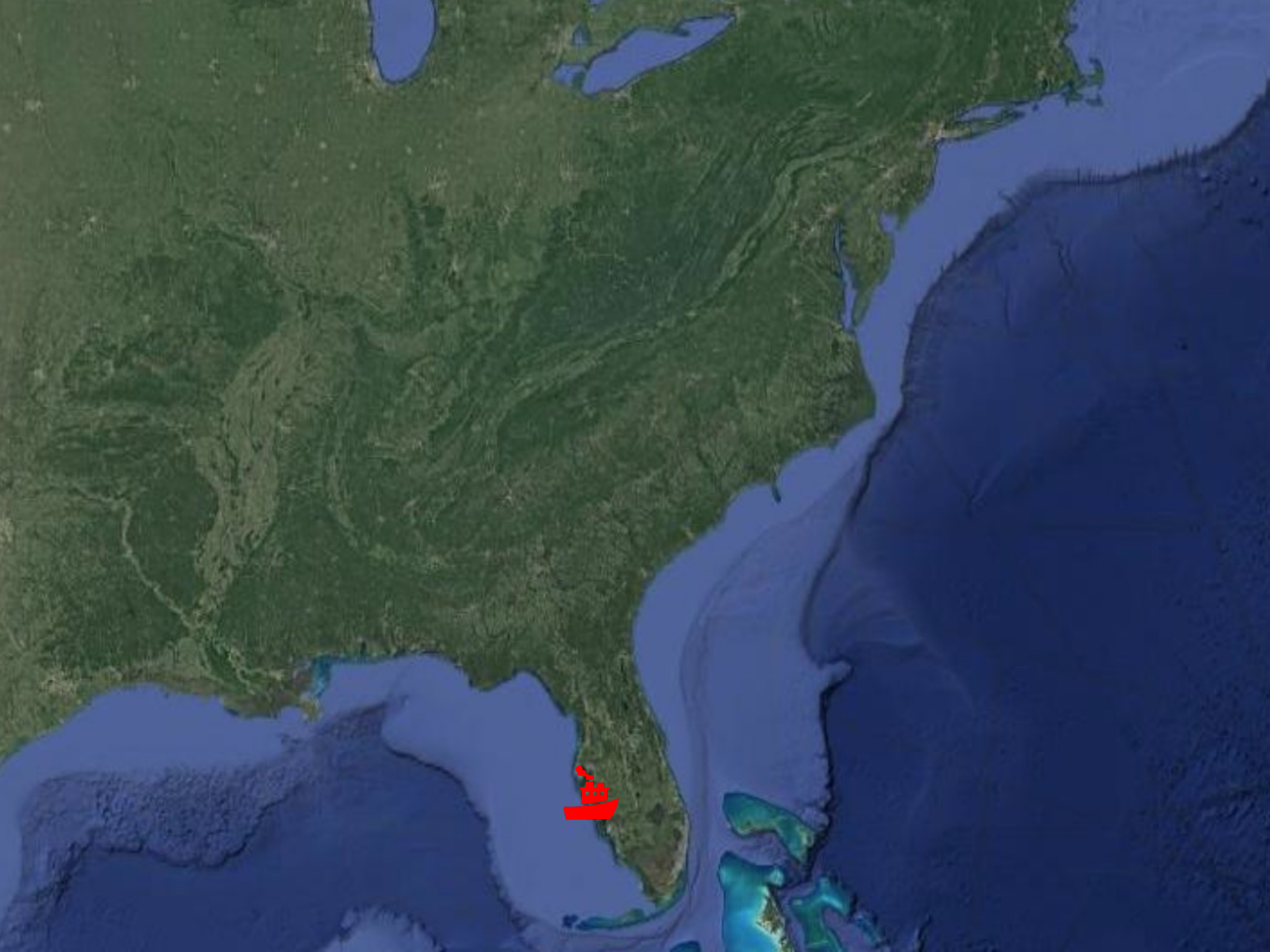
© 2023 Google

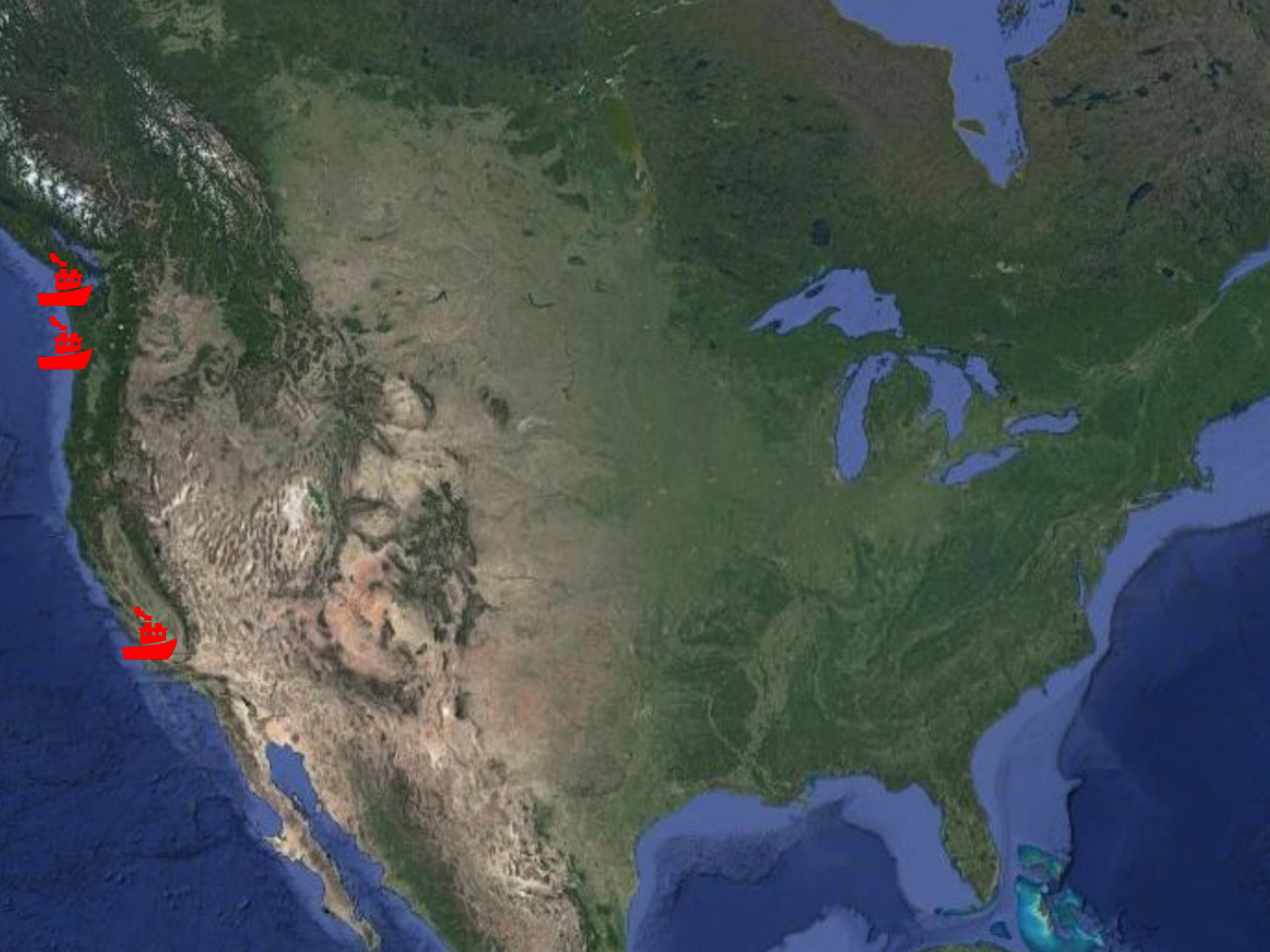




海

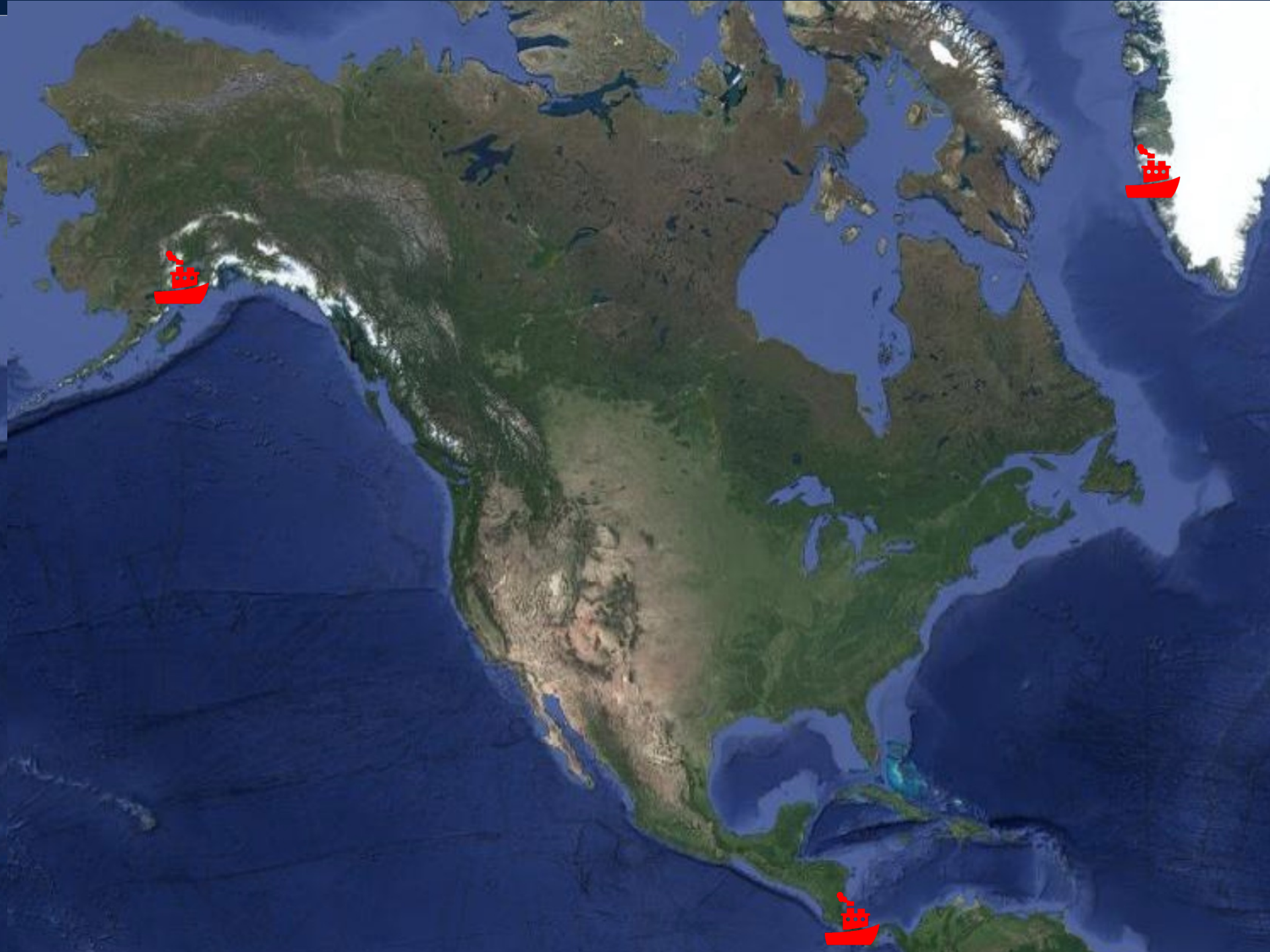






海
海







海

海







4

Issues and Repairs

What broke this time?

Problems encountered this year

1

Slipring Failure

Gloria's FORJ/Slipring seized up causing it to fail.

We made an adapter plate to use Focal 180s

2

Enclosure Failure

Return shipping caused damage to the drives and cables of Curly.

Rebuilt system by replacing drives and cables in time for the next cruise

3

Bent Encoder Shaft

Jay Jay's encoder shaft was bent during loading. Temporary repairs were made to allow for the next use.

A permanent fix is underway.



5

Improvements

We can build it better

ECWP Remote

User Interface

Connection Process

Splash Screen

Long Extensions





Path: C:\Winch Pool\MASH\Log MASH2K-1\Shop Test



ECWP Data Collection Program

Supports Additional Winches

Multi-Winch Plotting

Cross Platform

Resizable Display

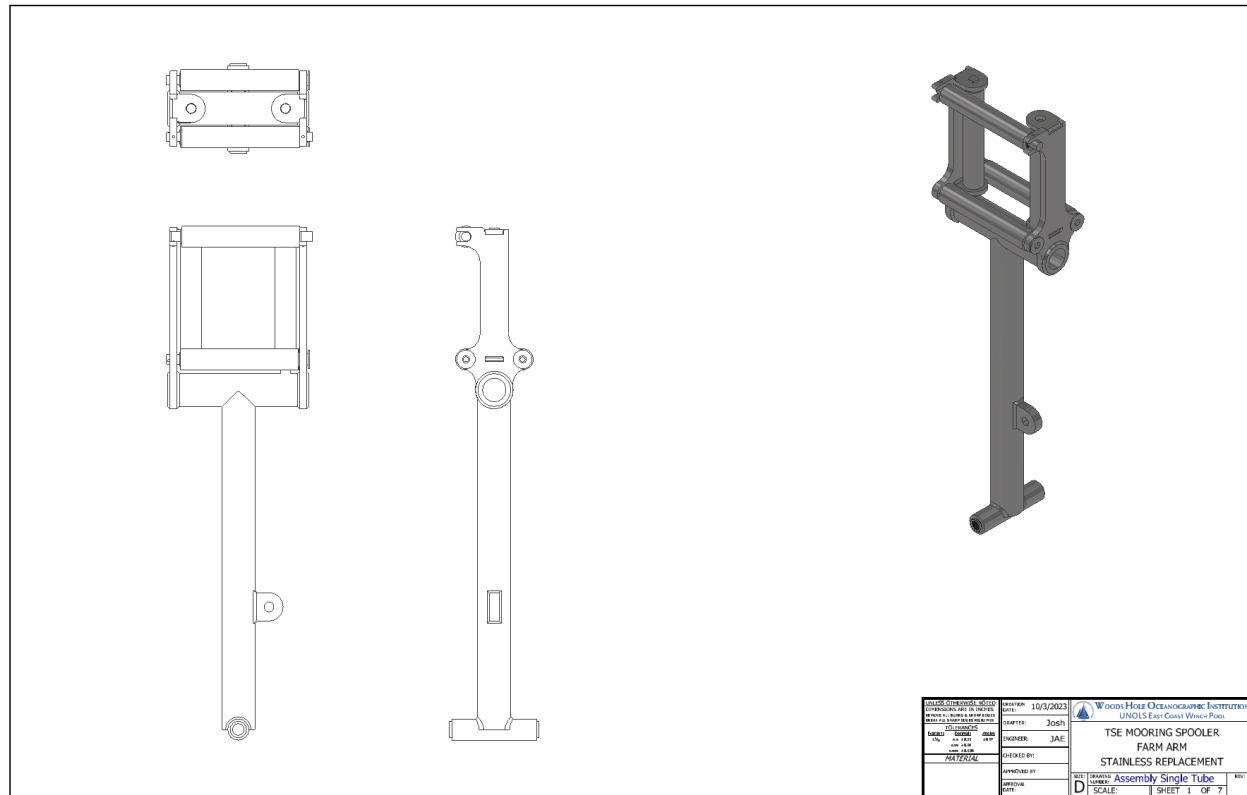
Appendix A Visual Warnings and Alarms

Cletus & Cooter

Stainless Steel Rollers (Both)

Stainless Steel Farm Arm (Cletus)

New Lift Points (Cooter)





Jay Jay

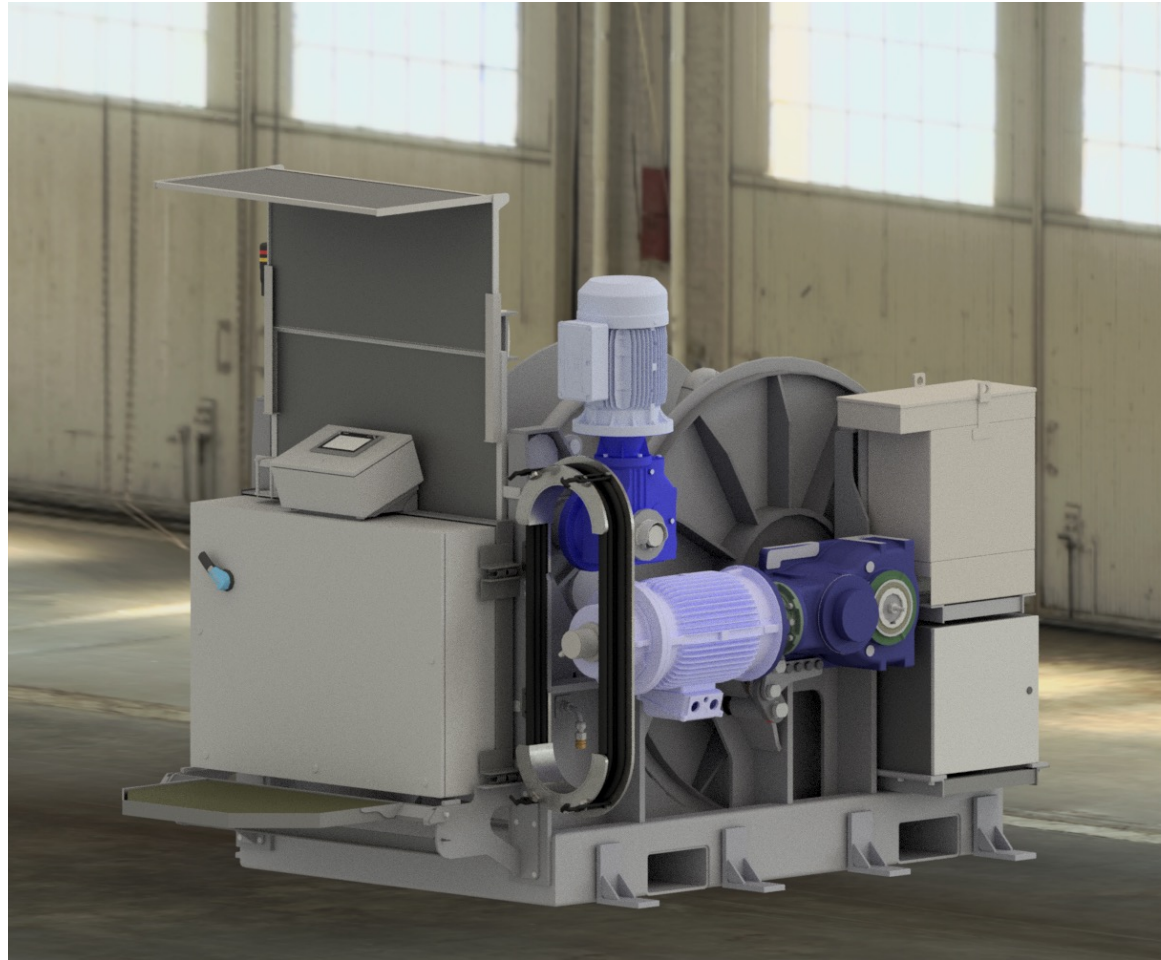
Operator
Platform

Improved
Metering

Godzilla

New Spare
Parts
Enclosure

Power
Cord
Storage

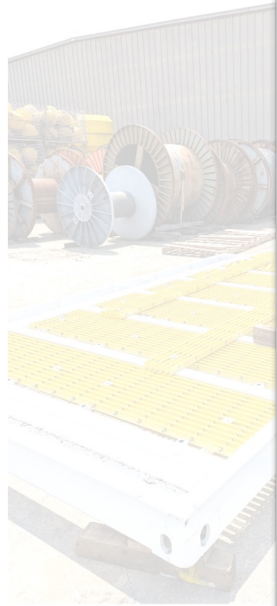




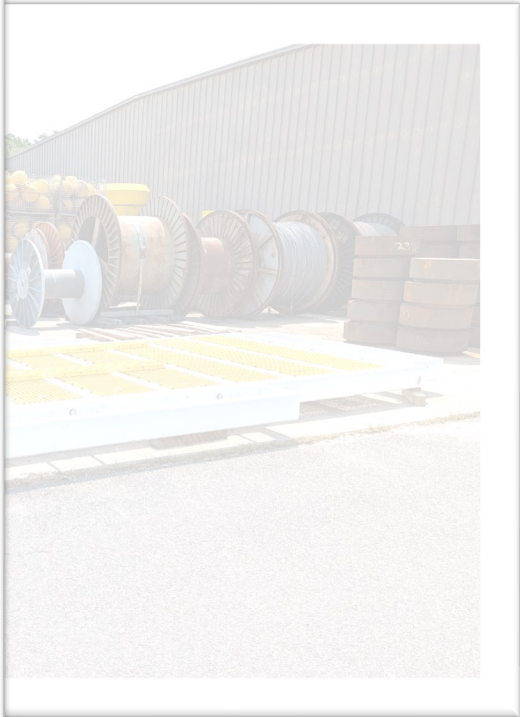
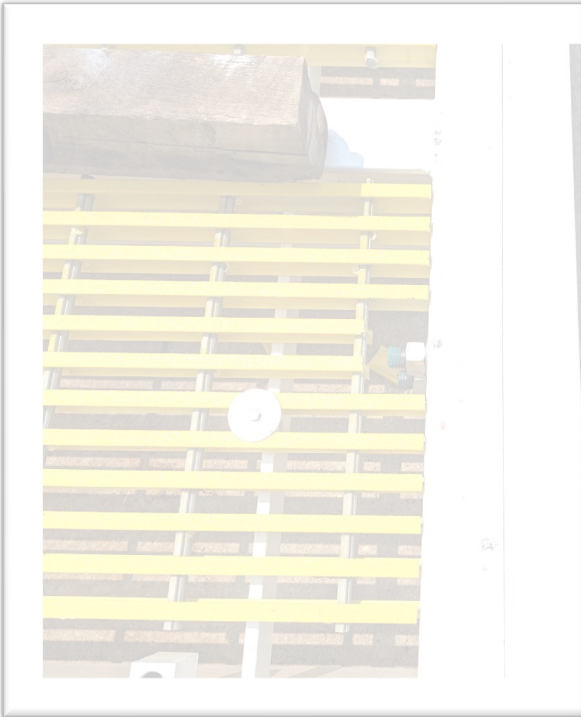
Projects

Not just winches

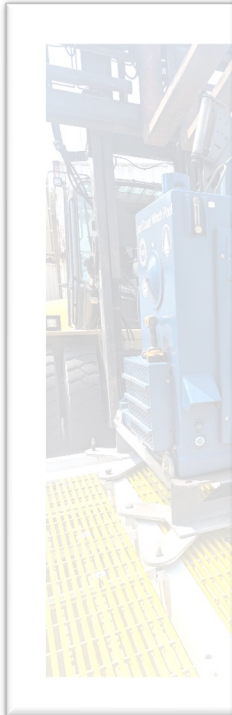
USAP Winch Platform



USAP Winch Platform



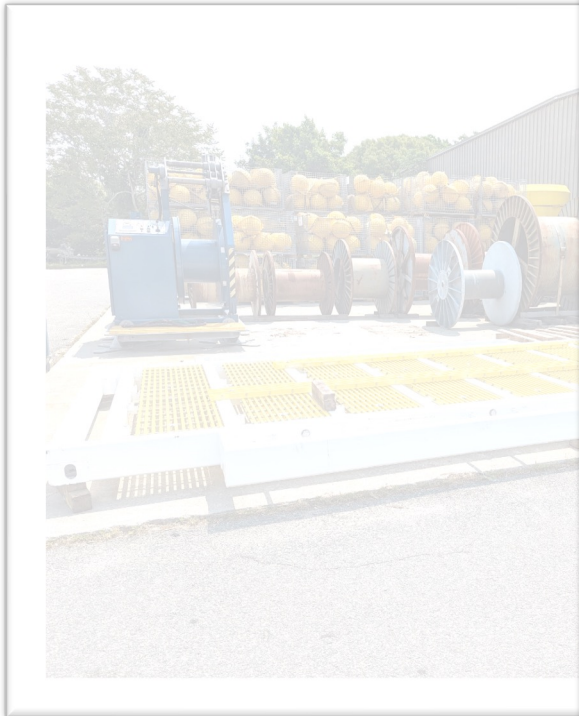
USAP Winch Platform



USAP Winch Platform



USAP Winch Platform



Test Tower





Other Services

Help us help you

Services

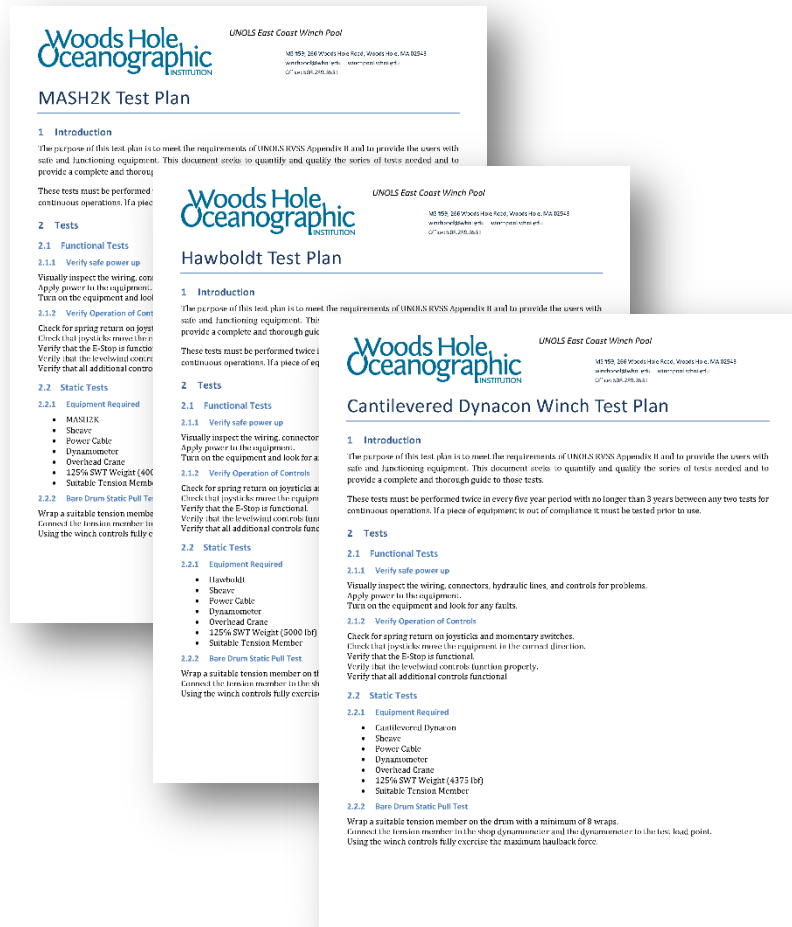
Acquisition Assistance

Testing Plans

Training

LCI-90i Oversight

Technical Assistance





Future

A look into the crystal ball

Upcoming



Additional
Tracemetal
Winch

Replacement
for Jed

Test Tower
Completion

Questions?



WOODS HOLE **OCEANOGRAPHIC** INSTITUTION