



NIOZ update 2019-2023

New Fleet Update

Erica Koning – NMF NIOZ

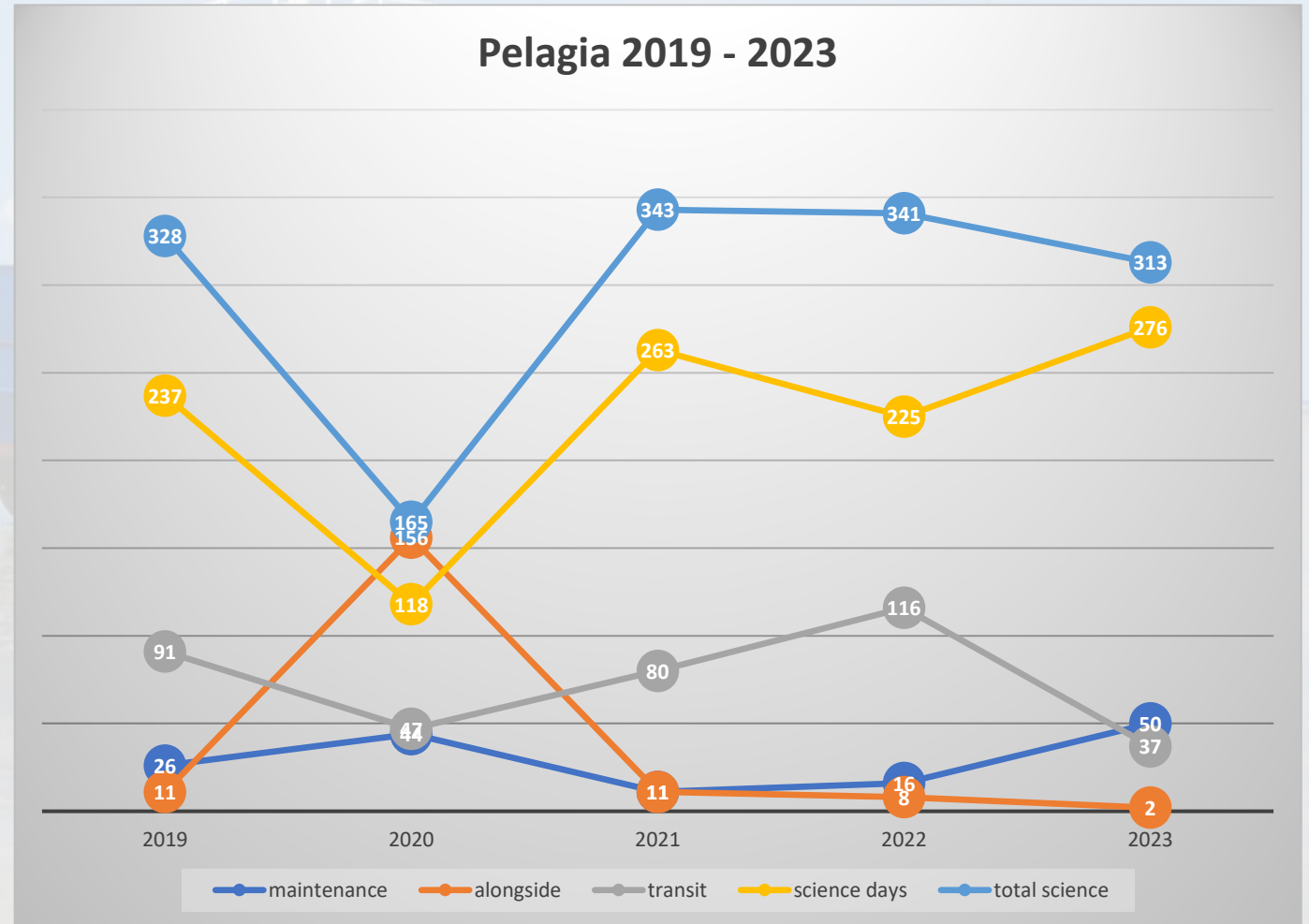
May 2023

RVOC Duluth





Pelagia 2019 - 2023



Recent operational issues



- Diplomatic clearance for Western Sahara and Morocco
- Scientist related issues:
 - Scientist's personal information is provided via MFP.
 - Mandatory for scientists: seafarer's medical and PST certificate.
 - Information to be provided on medical issues, allergies, dietary preference, next of kin.
 - We seem to have more allergies that we used to have.
- Recent issues:
 - Peanut allergy
 - Gluten allergy
- Prescribed cannabis



NRG 5 ZERO gluten en lactosevrij 24 dagen

- Compact en direct eetbaar
- 15 jaar houdbaar
- Aan te mengen met water
- Geen conserveringsmiddelen
- 24 x verpakking 500 gram
- 2.325 calorieën per dag

€ 275,00

Dutch research fleet



NMF at NIOZ operates the Dutch national research fleet, containing of:

3 ships

Personnel: crew, technical support, office

National equipment pool



Dutch research fleet replacement



RV Stern (14.6m)

RV Navicula (23m)

RV Pelagia (66m)



RV Adriaen Coenen (19m)

Summer 2022



RV Wim Wolff (36m)

October 2023



RV Anna Weber van Bosse (80m)

expected: Q4 2025

RV Stern



Length: 14.6m
Speed: 15kn
Age: 46 years

RV Adriaen Coenen

In operation since August 2022



Length: 19m
Speed: 21kn

RV Adriaen Coenen



Technical information

- Engines: Scania (Stage V)
- Water jets: Hamilton
- Energy during cruising: HVO diesel engines
- Anchored/grounded: solar panels and battery pack

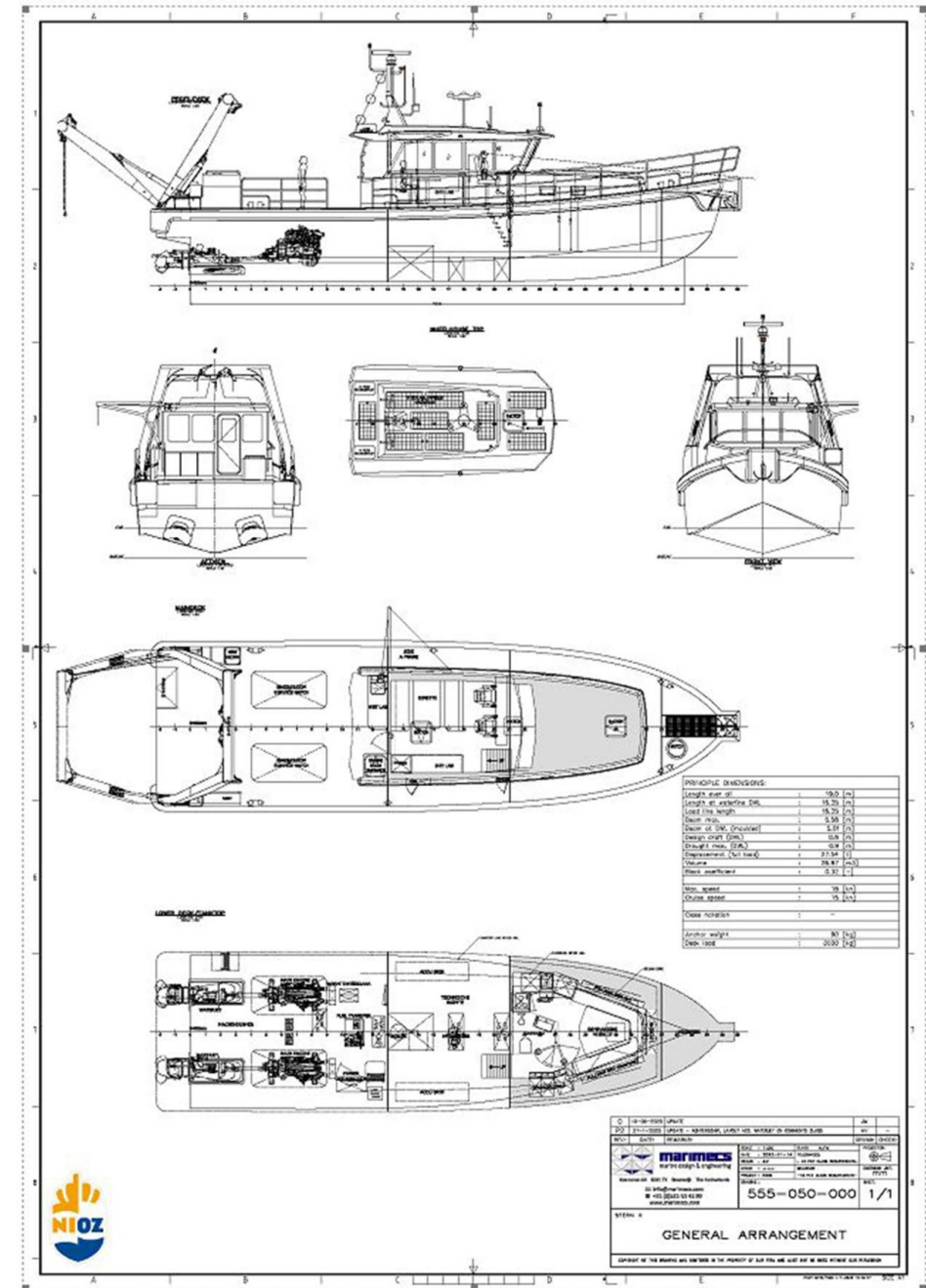
- Energy back up by small generator



RV Adriaen Coenen

Specifications

- Length overall: 19 m
- Beam: 5 m
- Draft: 0,8 m
- Material: Aluminum
- Speed: 21kn
- DP
- Crew: 2
- Passengers: 12 for day trips
- Features: A-frame, side frame, ADCP & Multibeam deployment, wet lab, dry lab, towing arrangement



RV Adriaen Coenen

Building process at Next Generation Shipyards in Lauwersoog, The Netherlands

This shipyard specializes in aluminum builds



RV Navicula

- A 40-year-old, 23m vessel
- Beam: 7m
- Draft: 1m
- Speed: 7kn
- operates in the Wadden Sea tidal area, Zeeland Delta, and near-coastal North Sea (only at very good weather).
- 3 crew + up to 8 scientists



RV Wim Wolff



The *RV Wim Wolff* is designed with a shallow draft of 1m, specifically for multi-day research trips in the Wadden Sea and Zeeland Delta.

Aluminum ship

being built by Thecla Bodewes Shipyards (TBSY) in Harlingen, The Netherlands

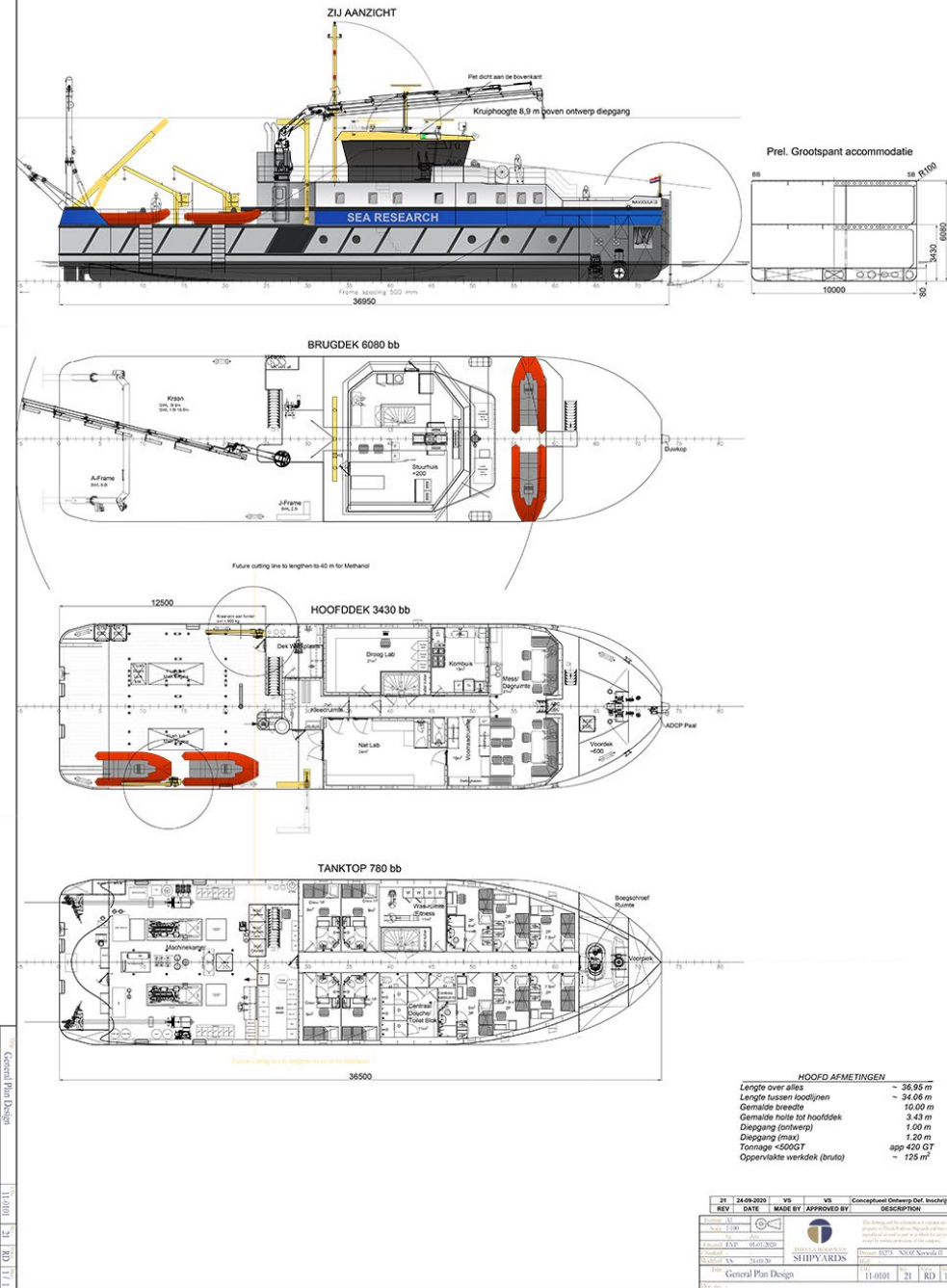
The expected delivery is in the **November of 2023.**



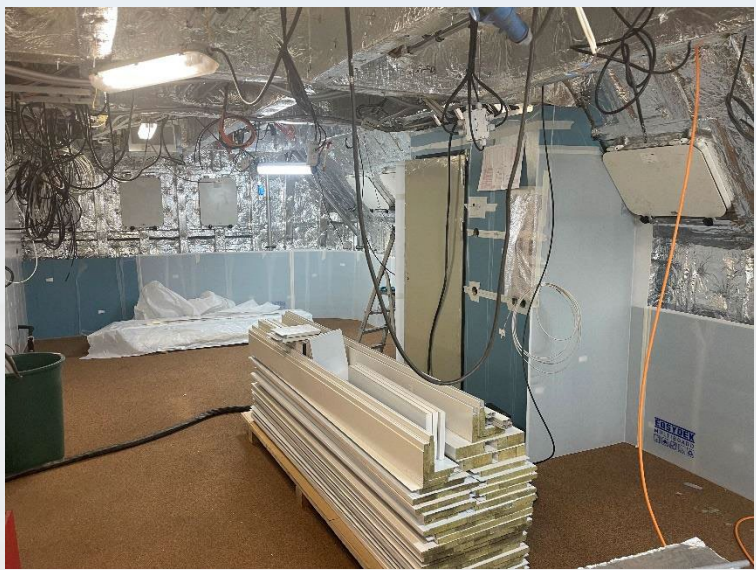
RV Wim Wolff

Specifications

- Length overall: 36 m
- Beam: 10 m
- Draft: 1 m
- Aluminum, battery capacity for 8hrs.
- Flat bottom to sit on the tidal flats
- Tunnel thruster and pump jet
- Gross Tonnage approx.: 420GT
- Working deck area approx.: ~125m²
- Speed: 12kn
- 3-4 crew + 12 passengers for maximum 2 weeks
- dry and wet lab
- 2 container spaces on the working deck



RV Wim Wolff



RV Wim Wolff

Update from May 2023:



RV Pelagia



Length: 66m
Speed: 10kn
Age: 32 years
Berths: 34 in 25 cabins

12 scientists + 1 tech support + 12 crew (single berths).
Option for 9 additional persons

Container capacity :
3 - on D-deck aft
1 - in hold on D-deck
4 - in hold on tanktop
UCC container extra on D-deck
when we operate the UCC

Additional storage: 1 container + 1 flatrack

RV Pelagia



Specifications

- Length overall: 66.05m
- Beam: 12.80m
- Draft: 4.20m
- Cruising speed / Maximum speed: 9kn / 11kn
- Diesel-electric
- Fuel consumption at cruising speed: ~4.5 m³ per day
- No DP

RV Anna Weber van Bosse



The *RV Anna Weber-van Bosse* will be built by **Astilleros Armon A.S.** in Vigo, Spain.

Contract was signed last December and we are currently finalizing the design with the yard

Delivery is scheduled for Q3-Q4 of 2025



RV Anna Weber van Bosse



Specifications

- Length overall 79.98m
- Beam 17.00m
- Draft 5.00m
- Accommodation 46
(16 crew and 30 scientists)

RV Anna Weber van Bosse



- Ice-class 1C
- Longer periods at sea with more people onboard
- Designed to be capable of handling large equipment: ROV's, AUV's, MEBO, ROCKDRILL etc.
- Piston cores up to 30m
- Main-, dry-, wet- and hangar/geolab
- Room for 12 laboratory containers (max 17)
- Dynamic Positioning (DP2)
- Methanol ready
- Aim for changeover refit after 10 years, possibly sooner
- Endurance when fully on methanol: 34 days

RV Anna Weber van Bosse



Working area: World wide,
Up to ice-edge in polar regions

Questions?

