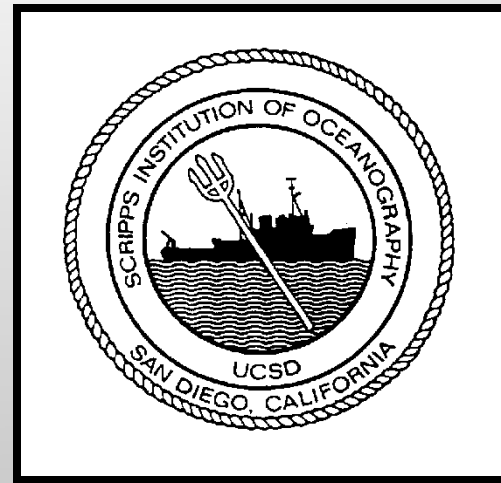


RVTEC 2022

NSF WEST COAST WINCH POOL
OPERATED BY
SCRIPPS INSTITUTION OF
OCEANOGRAPHY



OUR MISSION

- To provide an inventory of oceanographic winches (etc.) for shared use.
- To keep our inventory in good repair and in compliance with applicable standards (CFR, RVSS).
- To modify our inventory to better serve our community.
- To provide technical support: cable/wire rope spooling, training, maintenance, repairs, engineering, fabrication, advice...

HOW THE WINCH POOL WORKS

- Funded by NSF
- Customers (science parties and others) communicate their needs to us.
- We match their needs to available machinery and personnel.
- We work with customers to send machinery and personnel to and from the vessel and to schedule work.
- Those conducting NSF-funded research generally incur no costs to use OUR Machinery and our personnel.
- Others **generally** pay a “day rate” and the cost of freight.

LIGHT-DUTY WINCHES

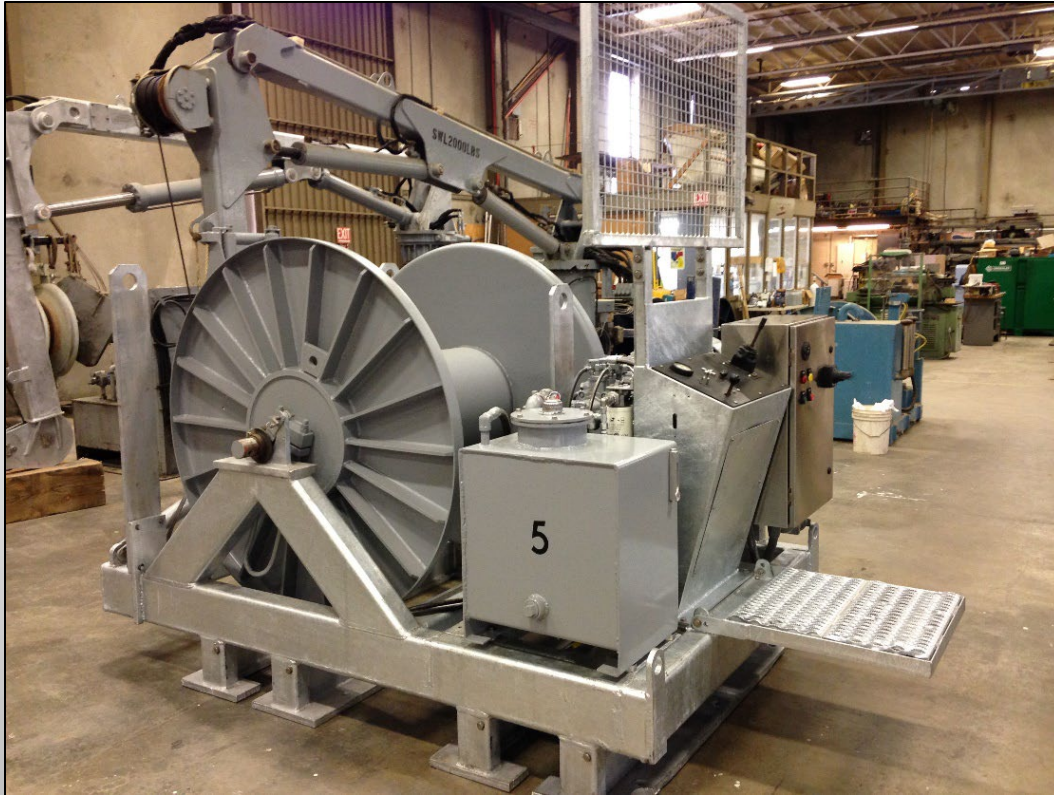


Hawboldt SPR-2036/S

Up to 3,500 lbs pull.
Holds 3,000 m of .322 cable.



MOORING SPOOLERS



TSE **Mooring Spoolers**

Up to 7,500 lbs pull.
Holds 2,800 m of 1" line.

MOORING WINCH



Hawboldt SPRE-3464 Mooring Winch

Provides up to 10,000 lbs pull.

Withstands up to 20,000 lbs pull.

Tension and Scope Display

Holds 2,800 m of 1" line.

Footprint similar to TSE Spooler.

MOORING CAPSTAN

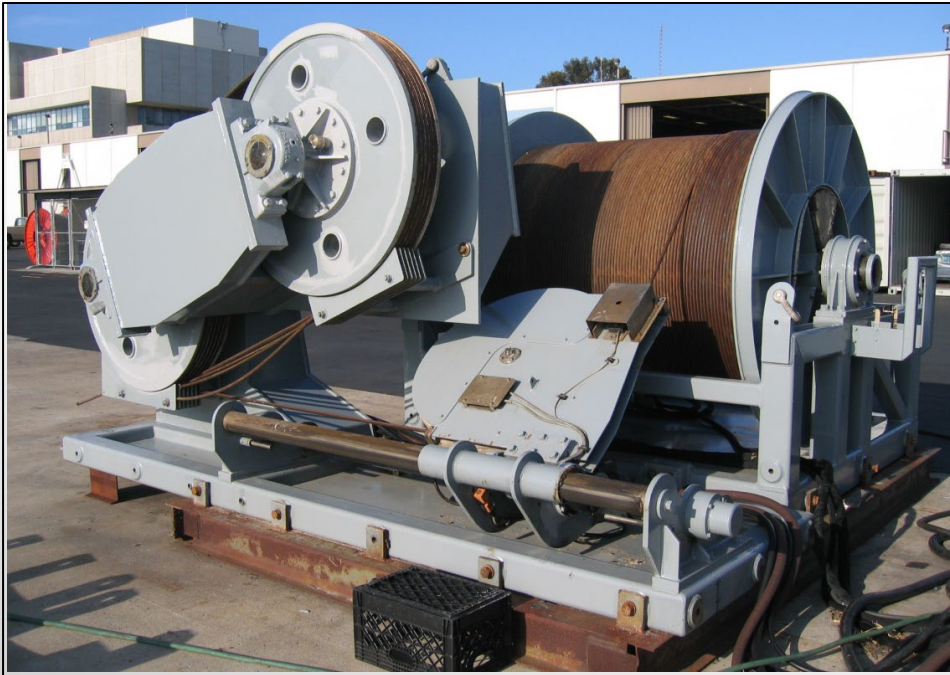


Lebus Mooring Capstan

Also for spooling moorings.

Up to 7,000 lbs pull. Unlimited cable-holding capacity.
(Remote operating station, wireless remote not shown)

HEAVY-DUTY WINCH

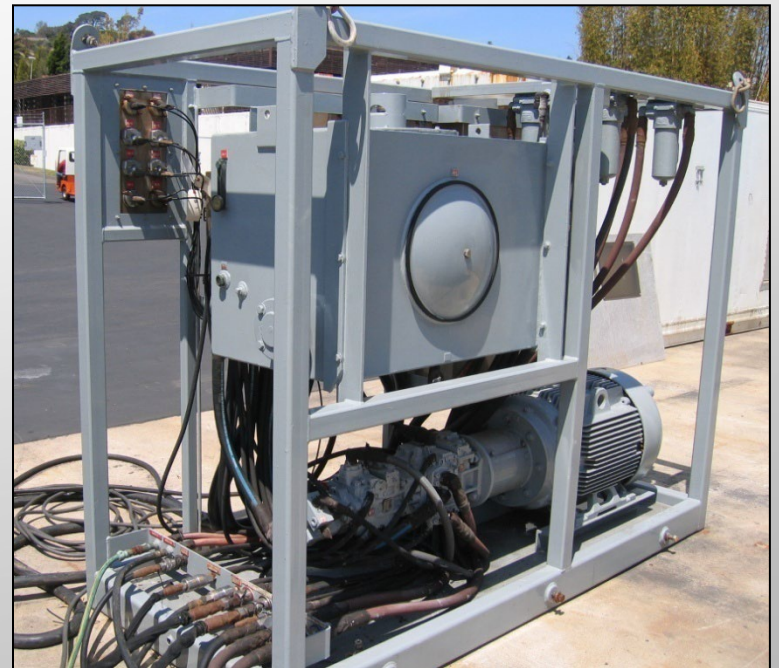


Dynacon Traction Winch

Up to 25,000 lbs pull.

Holds 10,000 m of .681 cable.

(Remote operating station not shown.)



HAWBOLDT MOORING WINCH



- New drum motor encoder.
- New motor load meter.
- New fail-safe brake protocols.
- New water proof braking resistor.
- RFP pending for a 2nd mooring winch.

HAWBOLDT LIGHT-DUTY WINCH



- New intake silencer on HLD-2.
- Sound absorbing foam throughout the machinery compartment.

ENGINEERING PROJECTS 2021-2022

- Engineered a new turning sheave for R/V ROGER REVELLE's stbd. crane oHS (for coring). Made a test procedure for it. Tested it.
- Made a new fire plan for R/V ROGER REVELLE.
- Made specs for, Purchased two portable cranes for R/V ROGER REVELLE.
- Purchased a new lebus shell for the CAST-6 winch on R/V ROGER REVELLE.
- Made test procedures for R/V ROBERT GORDON SPROUL's trawl and ctd ohs, tested them.
- Managed factory modifications to the SPRE-3464 (mooring) winches.
- Helped FSU personnel engineer a water sampling boom.
- Purchased a SPRE-3464 (mooring) winch for UH, a spooling machine for WHOI.
- ***Bought a lot of spare parts***

CONTACT US

Capt. Wes hill, Manager

(858) 534-5568

whill@ucsd.edu

Aaron E. Davis, PE, Engineer

(619) 251-6368

aed001@ucsd.edu

#NSF WINCH POOL

