

# MFP Update

Council Spring 2022 Meeting  
7Jul2022



# Marine Facilities Planning

- Multi-Module system for requesting ship time, scheduling, cruise planning, personnel and inventory management.
- Developed in the Netherlands for NIOZ and NERC



MFP Update

# Schedule Construction Module

- 2022 schedules are in the system (for the most part!)
- System is generating some nice reports (sort of!)
- 2023 scheduling is well underway as Doug pointed out
- System is leading to more forward thinking



## MFP Update

### Project Management (Cruise Planning) Module

- UW has been online most of the year (THANK YOU!)
- Other institutions/ships getting online soon-ish
  - SIO
  - WHOI
  - UH
  - UAF
- Holding off on the other institutions for now



MFP Update

## Inventory Management Module

- RCRV is our beta tester
- We are not moving quickly
- Working with CORIOLIX and R2R



MFP Update

# Personnel Management Module

- **Just started!**



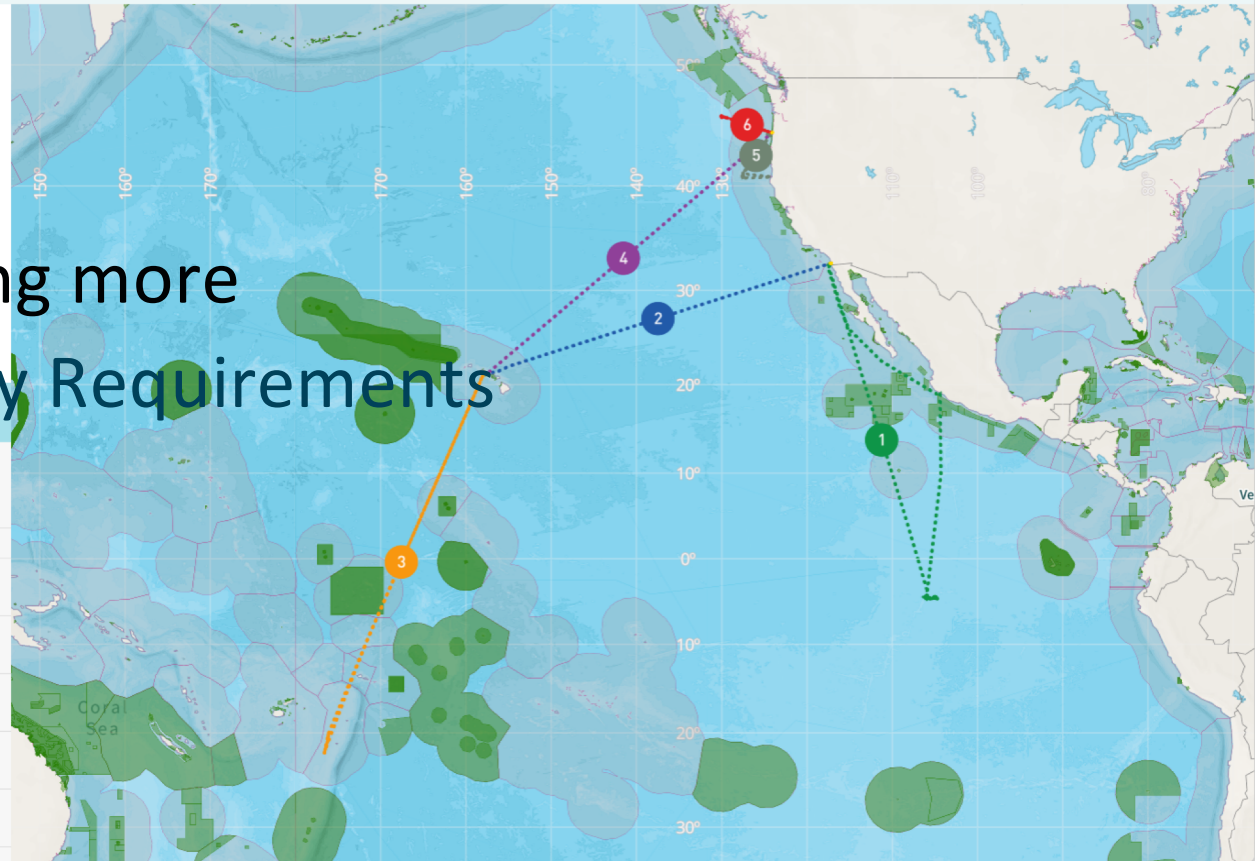
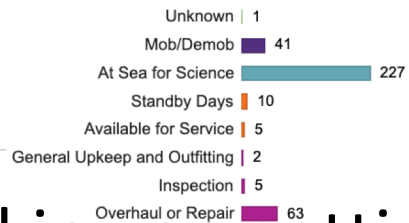
# MFP Update

## Event category report

Colour Code:  Ships track  Marine protected areas  
 Cruises

Thomas G. Thompson ▾ 2022 ▾

Days at sea: 141.0  
 EEZ: 0.0  
 Foreign EEZ: 76.6  
 International waters: 64.5  
 MPA: 2.3  
 Docked at ports: 147.5  
 International ports: 147.5



Working on getting more Funding Agency Requirements

TOTAL DAYS: 364

Cruise	EEZ	Foreign EEZ	EU EEZ	International waters	Total days
Thomas G. Thompson					
1 TN-399: GOFAR 2022	0.0	11.9	1.3	35.0	47.1
2 TN-400: Test Cruise	0.0	2.3	0.0	5.7	8.3
3 TN-401: Larv-Sym	0.0	39.4	0.0	6.7	46.3
4 TN-402	0.0	2.4	0.0	5.7	8.2
5 TN-403: Escanaba	0.0	19.0	0.0	0.0	19.1



## MFP Update

# SME/PI Updates

- Ability to download multiple SMEs at once.
- Trying to learn from questions and make updates
- Happy to hear from the community!





## MFP Update

- We are working on it.
- It is a process
- We want to hear feedback
- Thank you for your patience!