

- OBSIC Operations
- 2021 OBSIC Experiments
- 2021+ OBSIC Schedule



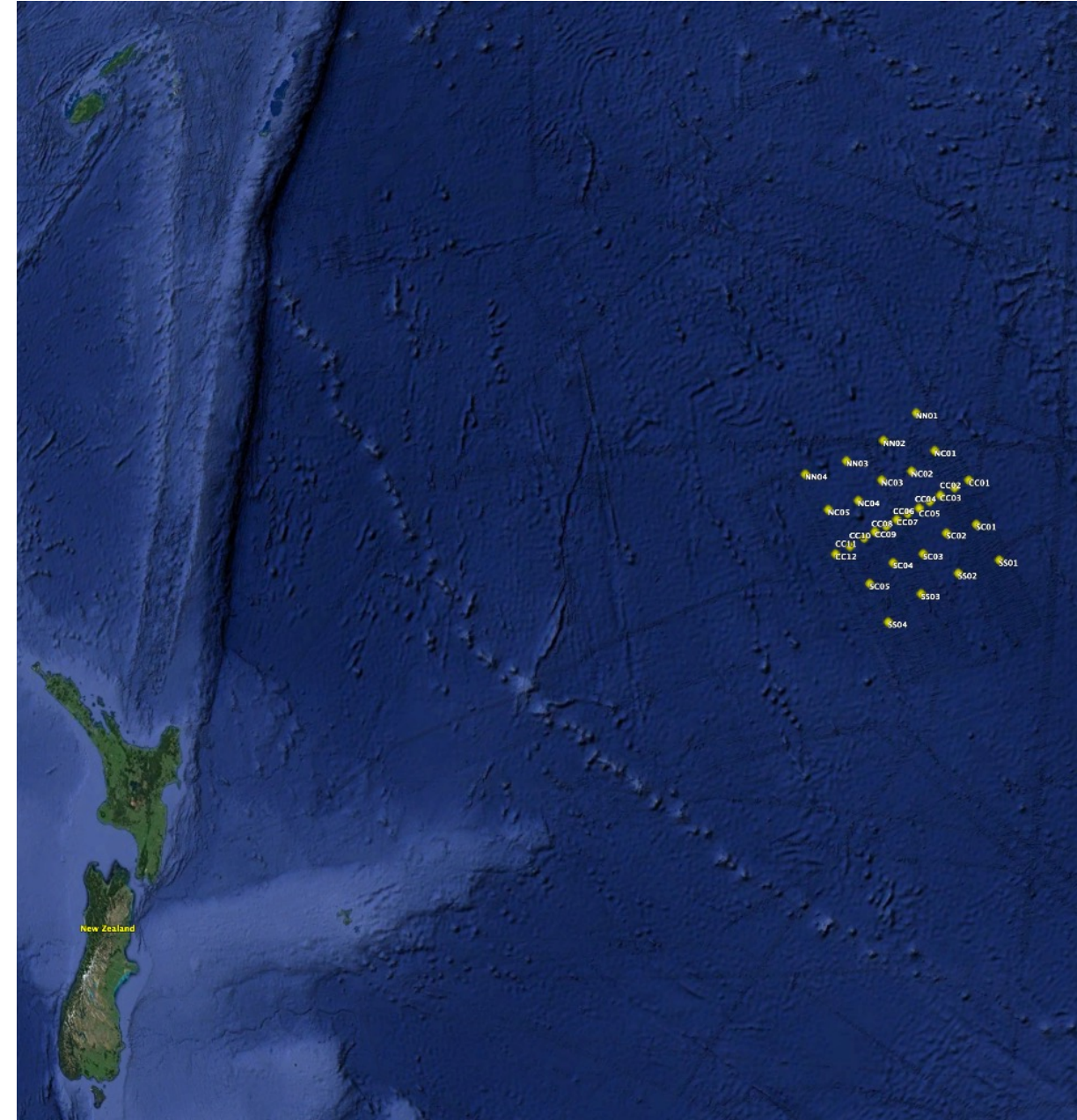


## 2020/2021 Operations

- Since November 2020, supported 4 experiments  
(Gaherty Pacific Array; Boettcher Gofar Transform Fault; Canales Cascadia; Worthington Queen Charlotte Fault)
- 6 cruises; ports for Gaherty and Boettcher impacted by COVID
- Pre-Cruise Quarantine (Gaherty; Gofar-Leg2, Cascadia-Leg1, Worthington)
- COVID-related restrictions meant very limited opportunity for training (TechPool and USGS-Woods Hole)

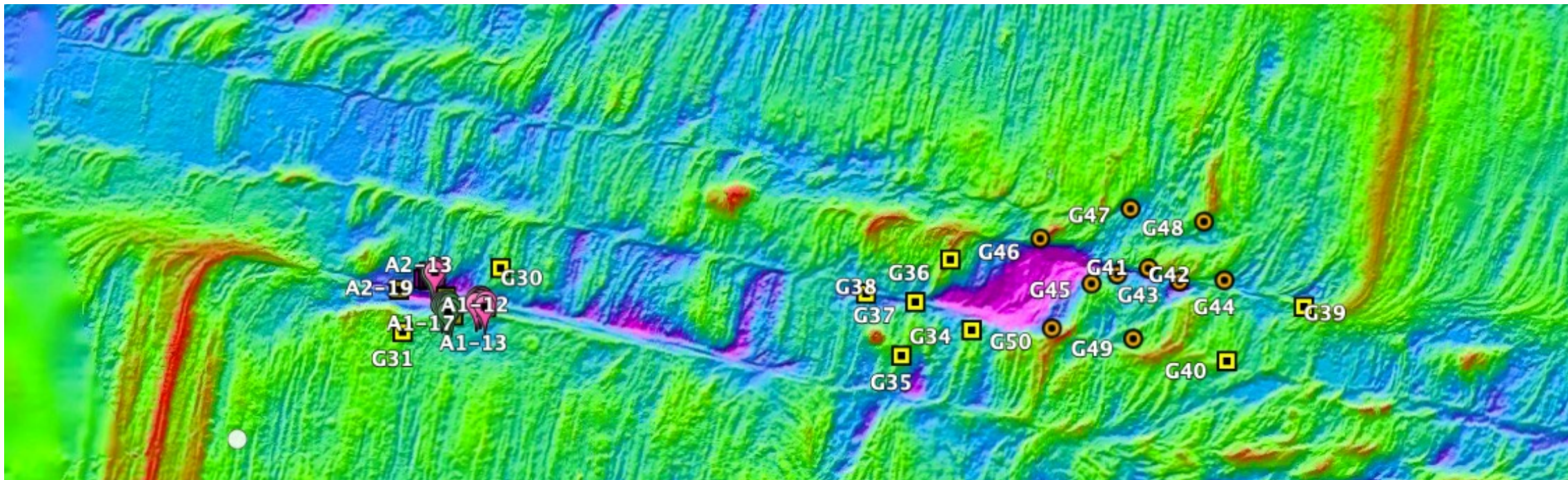
### Gaherty Pacific Array Experiment (Year 2)

- OBS Recovery
- R/V Revelle; 11/03/2020 – 12/20/2020; San Diego/Honolulu;
  - 2-week quarantine
- 30 SIO broadband OBS
- TechPool Participation (Justin Smith)



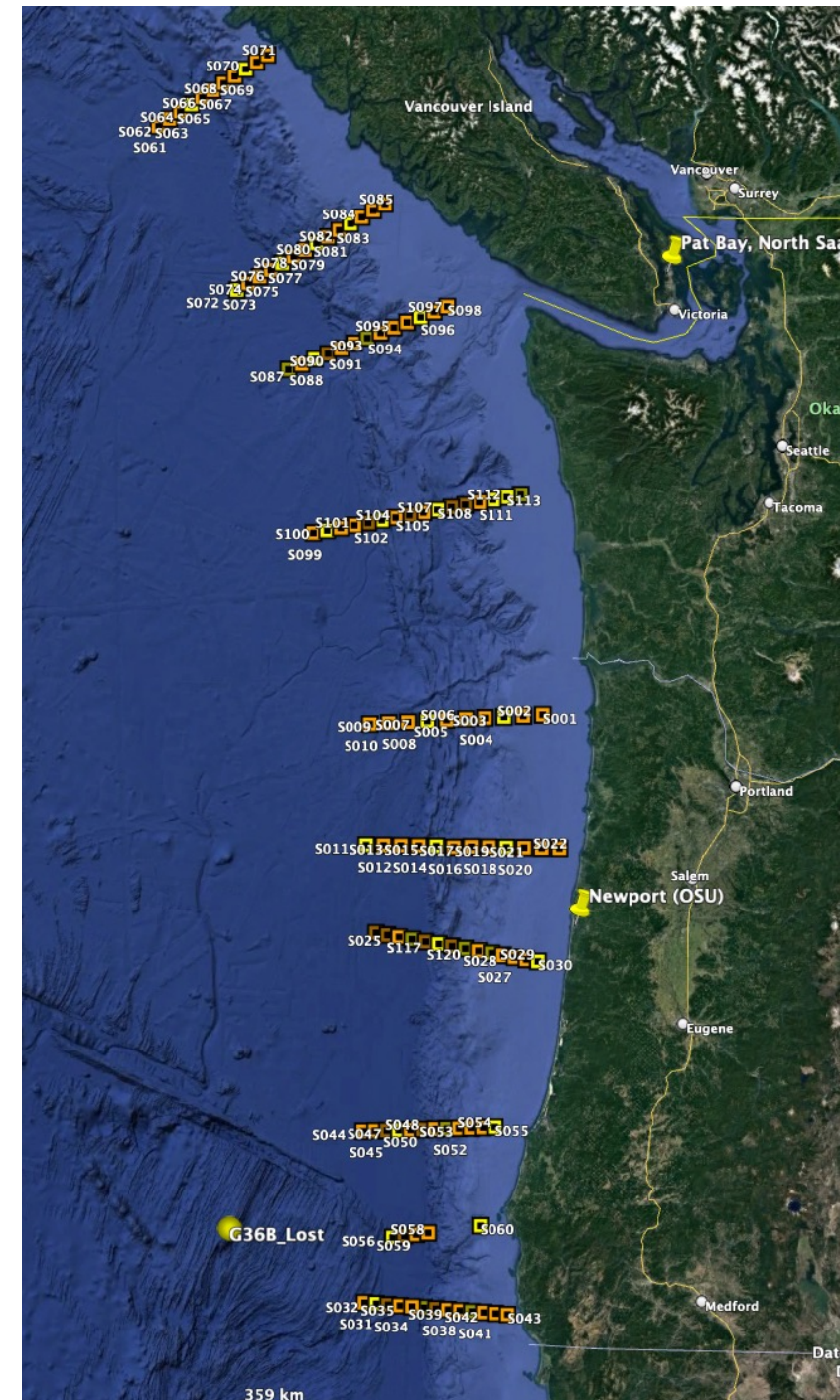
### Boettcher Gofar Leg 2 OBS Recovery and Redeployment:

- Covid-related delay of ~3 months
- R/V Thompson: San Diego to Port Everglades; 01/16/21 — 03/04/21;
- 2-week pre-cruise quarantine
- WHOI and SIO OBS Teams; 49 OBS recovered and 51 OBS deployed
- 30 wire-dropped/USBL-assisted OBS in 3 arrays of 10 to measure earthquake-related changes in Vs.
- Wire-dropped OBS included SIO SPOBS, SIO Abalone, WHOI ARRA, and WHOI D2
- Each mini-array had an aperture of ~1 km. Drop X-Y precision ~20 m



## Canales Cascadia Active-Source Experiment

- Delayed from 2020
- OBS, MCS, and 755 land stations
- Leg-1: R/V Langseth; 05/24/21 – 05/28/21; Newport/Newport;
  - 2-week quarantine
- Leg-2: R/V Oceanus; 06/23/21 – 07/14/21; Newport/Port Angeles;
  - No quarantine (everyone vaccinated)
- 60 WHOI/SIO short-period OBS , 120 deployments/recoveries
- Subject to Navy screening and possible data redaction

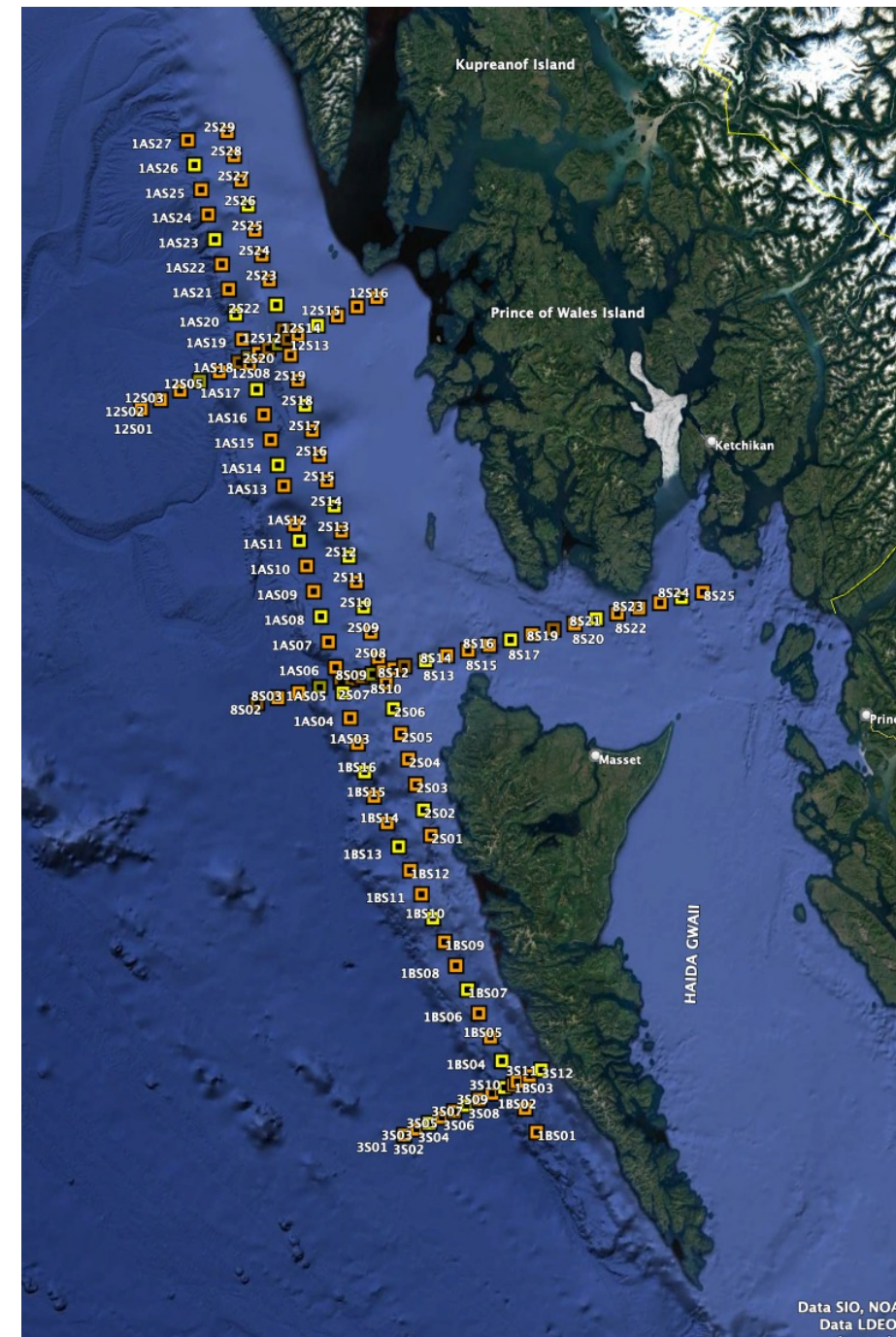




# 2021 At-Sea Operations ctd.

## Worthington Queen Charlotte Fault Active-Source Experiment

- Delayed from 2020
- Two-ship experiment: OBS and MCS
- CCGS Tully; 07/17/21 – 08/11/21; Port Angeles/Prince Rupert, BC
- 1 week pre-cruise quarantine
- 60 WHOI/SIO short-period OBS, 123 deployments/recoveries
- Subject to Navy screening but Navy concluded no redaction necessary



### Worthington Queen Charlotte Fault Passive-Source Experiment

- Delayed from 2020
- R/V Langseth; 08/27/21 – 09/03/21; Ketchikan/Seattle
- No pre-cruise quarantine
- 28 WHOI/LDEO broadband OBS deployed for 1 year
- Subject to Navy screening and possible redaction





## Upcoming Cruises 2021/2022

**Cruise dates and vessels subject to change.**

*Laske* NE Pacific OBS Deployment  
11/06/2021 – 11/28/2021

SIO; 25 BOBS (15 months)  
R/V Kilo Moana; Honolulu/Honolulu

*Boettcher* Gofar Leg 3 Recovery:  
01/14/2022 – 03/06/2022

WHOI/SIO; 13 BBOBS; 10 SMOBS; 28 SPOBS  
R/V Thompson; San Diego to Papeete(???)

*Becel* Active-Source (Guerrero Gap)  
04/07/2022 – 05/23/2022

WHOI/SIO; 33 SPOBS; 134 drops  
R/V Langseth; Manzanillo/Manzanillo

*Wilcock* Axial Seamount Year-1 Deployment  
08/29/2022 – 09/03/2022

WHOI; 10 SPOBS and 5 BBOBS (2 x 12 months)  
R/V Langseth, Newport/Port Angeles

*Worthington* Queen Charlotte Fault Broadband Recovery  
09/04/2022 – 09/17/2022

WHOI/LDEO, 28 BBOBS (1-year);  
R/V Langseth, Port Angeles/Port Angeles

*Lin* Active-Source (Puerto Rico Trench)  
10/15/2022 – 11/10/2022

WHOI/SIO; 25 SPOBS; 30 drops  
R/V Langseth; San Juan/San Juan





## 2022 Concerns

- Possible COVID-related restrictions on foreign ports
- Shipping (cost increases?; delays?)
- Batteries (Electrochem now quoting 24 weeks)
- Supply Chain Delays