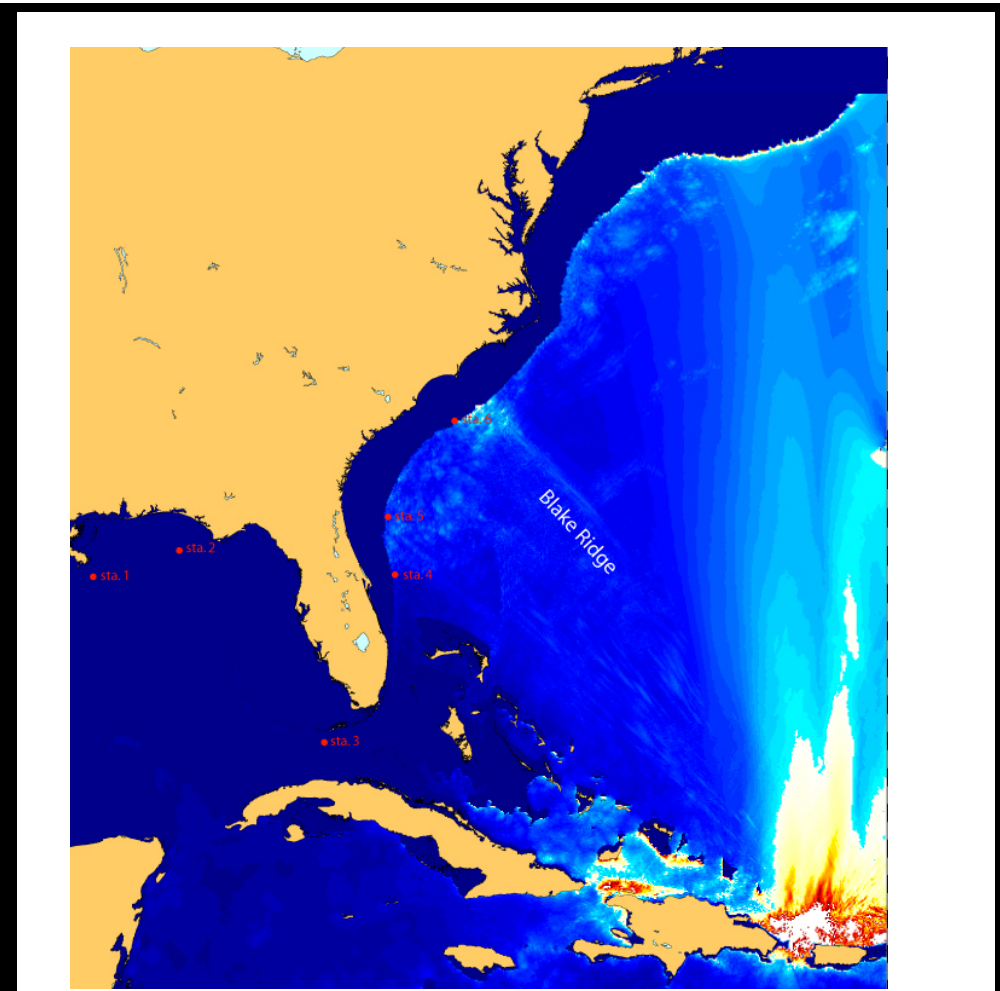


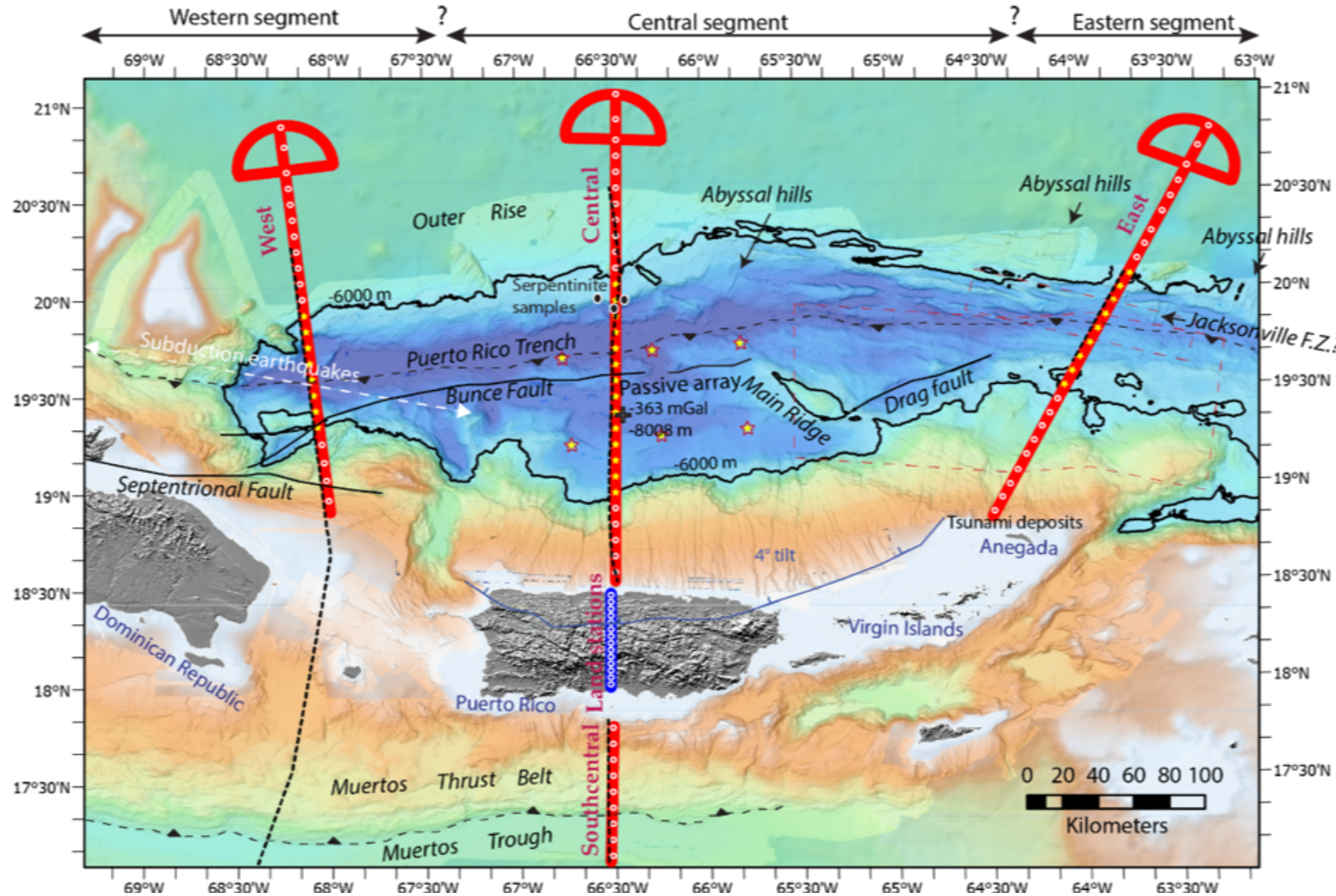
Collaborative Research:

Seismic investigation of the Puerto Rico subduction zone: structure, seismic hazard, and hydration of slow-spreading lithosphere

Jian Lin, Uri ten Brink, Pablo Canales (WHOI), Shuoshuo Han (UT), Liz Vancore (UP)



Puerto Rico Trench Seismic Experiment



- 25 OBSIC short-period OBSs
- 15 SCSIO broadband OBSs (up to 9000 m depth)
- 15-km MCS streamer
- 102 IRIS short-period + 10 broadband land seismic stations