

An aerial photograph showing a rugged, rocky coastline on the left side of the frame. The rocks are light-colored and have a jagged, uneven texture. To the right of the rocks is a dark, calm body of water. In the middle of the water, a small, dark boat with several people on board is visible. The overall scene is serene and natural.

Alaska Eskimo Whaling Commission

Arnold Brower, Jr., Executive Director



With decreasing ice, we are seeing increased number of vessels in our waters.

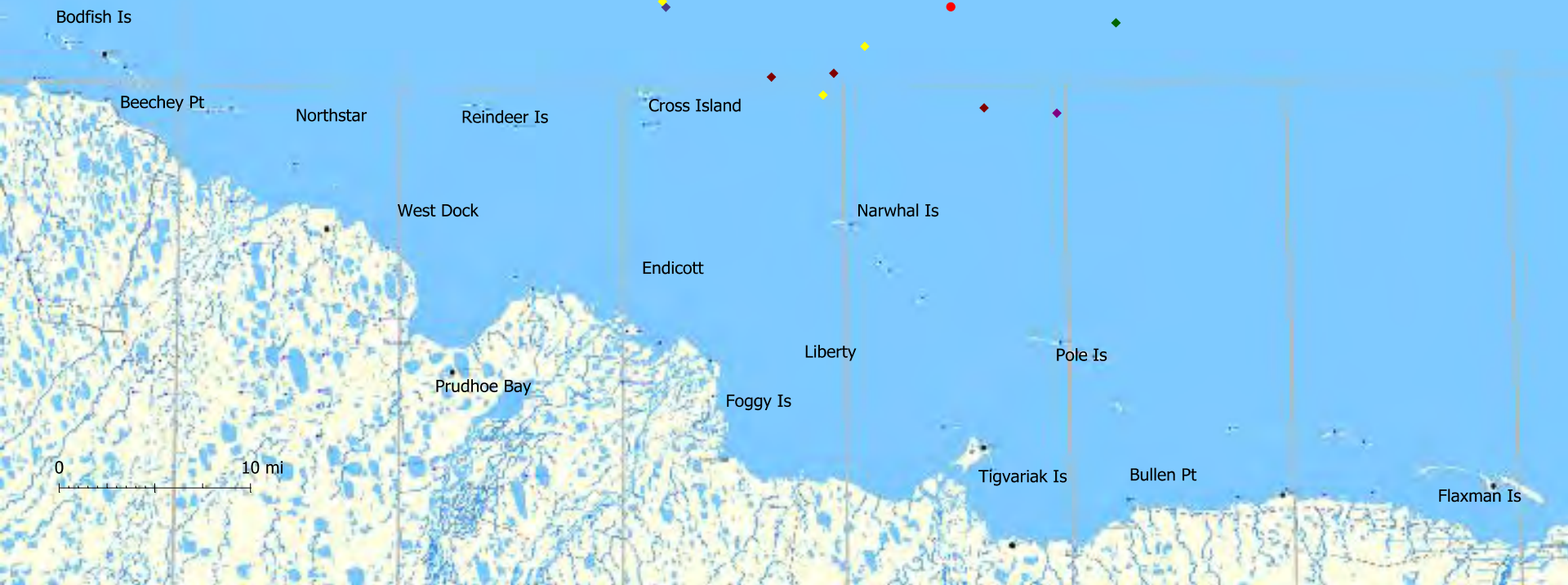


Large vessels transiting in open water puts whalers and other hunters at risk.



Whales Struck Near Cross Island 2001-2006

- ◆ 2001 Landed (3)
- ◆ 2002 Landed (4)
- 2002 Struck and Lost (1)
- ◆ 2003 Landed (4)
- ◆ 2004 Landed (3)
- ◆ 2005 Landed (1)
- ◆ 2006 Landed (4)



“For the years *2013, 2014, 2015, 2016 2017* and *2018*, the number of bowhead whales landed shall not exceed *336*. For each of these years the number of bowhead whales struck shall not exceed 67 . . . This provision shall be reviewed annually by the Commission in light of the advice of the Scientific Committee.”

**The International Whaling Commission (IWC)
regulates our bowhead whale subsistence quota.**



The AEWG Open Water Season Conflict Avoidance Agreement (CAA) utilizes mitigation measure to protect resources and hunting, while allowing responsible development.



Organizational Structure

Officers			
Willie Goodwin <i>Chairman</i>	James Boyer <i>Vice Chair</i>	Frederick Brower <i>Treasurer</i>	Vera Metcalf <i>Secretary</i>

Subsistence Hunters	Industry	Other
Willie Goodwin <i>Alaska Beluga Whale Committee</i> John Hopson, Jr. *George Noongwook <i>Alaska Eskimo Whaling Commission</i> Billy Adams <i>Alaska Ice Seal Committee</i> Charles Brower <i>[Nanuut TBD]</i> Vera Metcalf *Charles Brower <i>Eskimo Walrus Commission</i>	Brien Reep, ExxonMobil *Wayne Hall, Red Dog Mine <i>Oil / Gas / Mining</i> Greg Pavellas, Crowley <i>Tug & Barge</i> Brenda Konar, UAF/CFOS <i>Research</i> TBD <i>Fishing</i> Mike Tibbles, CLIA Alaska <i>Tourism</i>	Mayor Richard Beneville <i>City of Nome</i> Patrick Savok <i>Northwest Arctic Borough</i> Frederick Brower <i>North Slope Borough</i> Mary David, Kawerak <i>Regional Tribal Organization</i> James Boyer <i>Alaska Marine Pilots</i>

Support Staff	Sub-Committees & Chairmanship
Jenny Evans <i>Executive Secretary</i>	Subsistence: Billy Adams, Mary David Fundraising: Patrick Savok, Mary David, Frederick Brower Standards of Lightering & Barge Operations: Greg Pavellas SOC: Greg Pavellas, Patrick Savok, Frederick Brower Science: Dr. Martin Robards Infrastructure: Paul Fuhs & Jessica Lefevre
Katya Wassillie <i>Sub-Committee Coordinator</i>	

Ex-Officio Observers
Craig Fleener, <i>Governor's Office</i> ; David Pikul, <i>State of Alaska</i> ; Capt. Ed Page, <i>Marine Exchange of Alaska</i> ; CDR Justin Jacobs, <i>U.S. Coast Guard, Sector Anchorage</i> ; David Seris, <i>U.S. Coast Guard, District 17</i> ; Dr. Martin Robards, <i>Science/NGO</i> ; Jessica Lefevre, <i>Advisor on Legal & Federal Regulatory Issues</i> ; OSRO/Marine Salvage

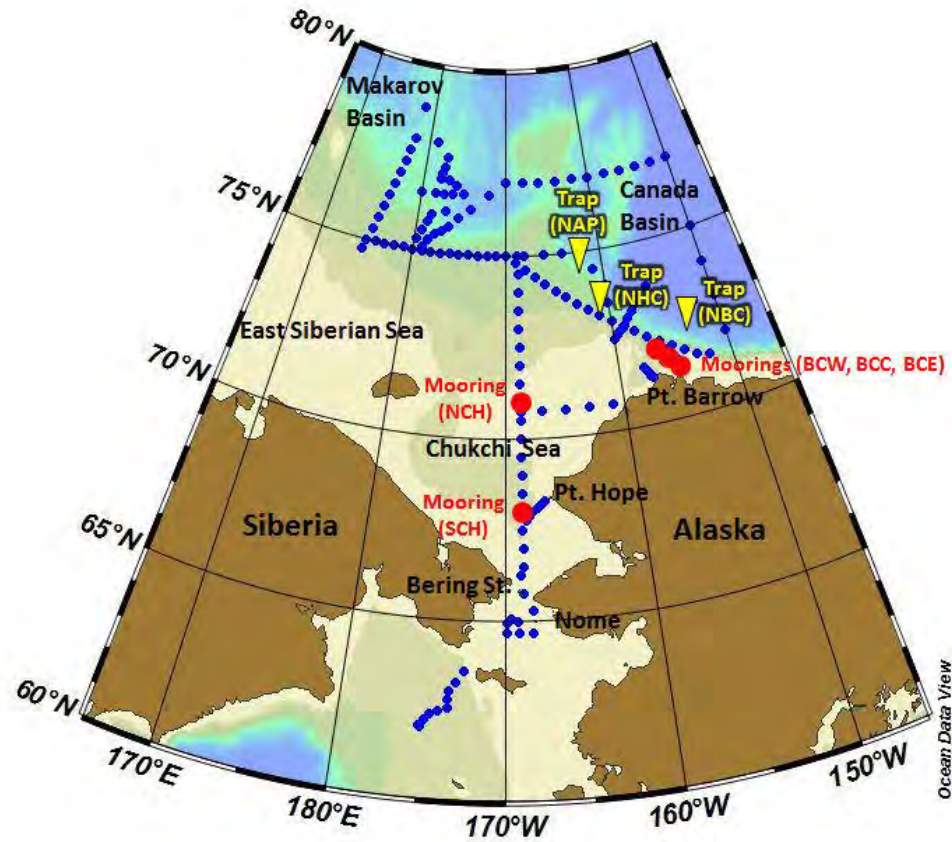
* Alternates

As a founding member of the Arctic Waterways Safety Committee (AWSC), the AEWC utilizes their experience with the CAA to work with vessel operators to develop mitigation measures for the increasing marine traffic in arctic waters.

Table 1

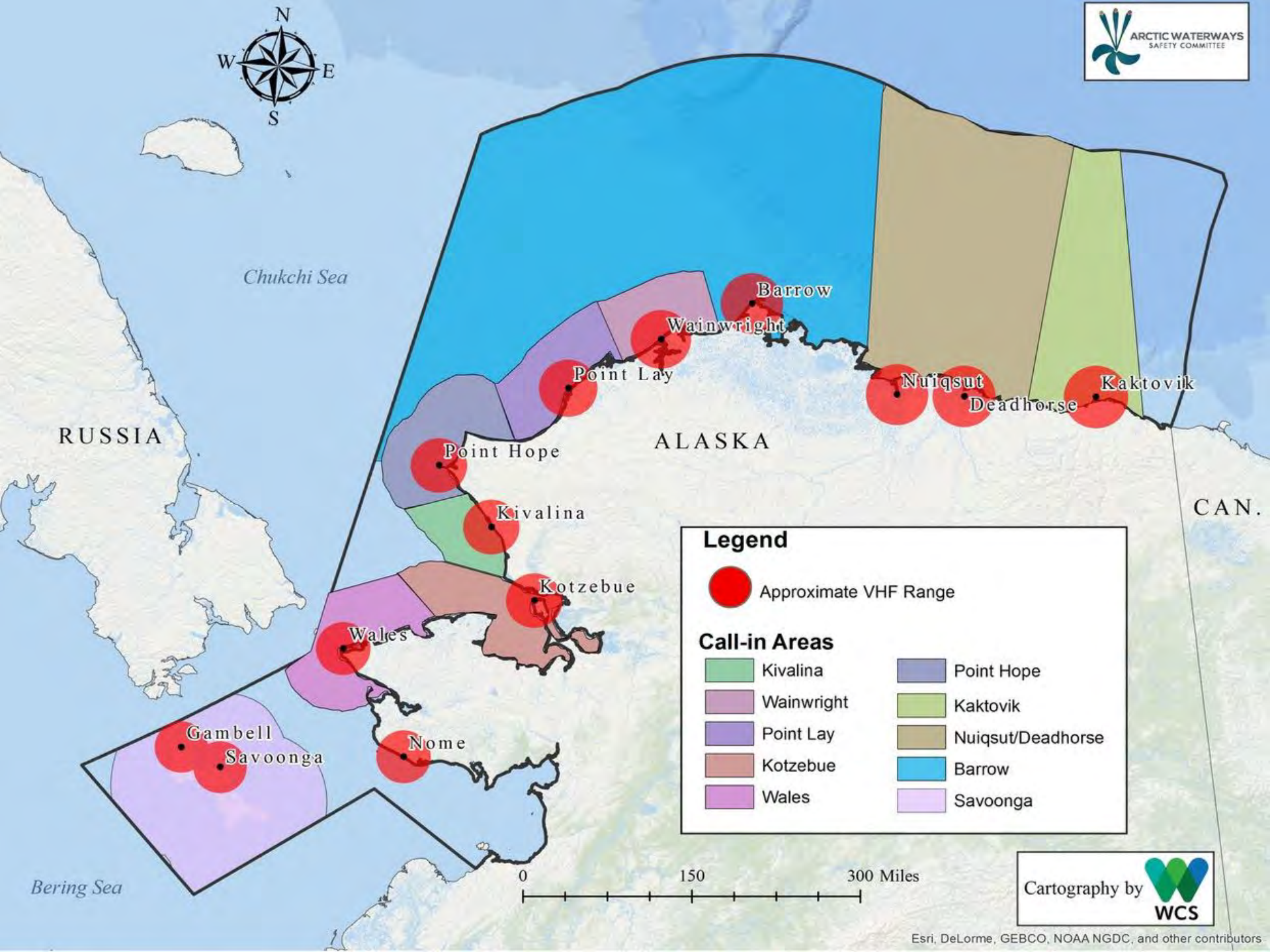
Vessel	N - Bstrait - □ = demarcation line	S - Bstrait □ = demarcation line	Dist fr Shore Chukchi	Planned Arrival Barrow	Heading fr Barrow/Dates	Dist fr Shore Beaufort	Planned Arrive Eastern Beaufort	Approximate Location for Research	Vessel Operator Contact	Research Contact
USCG Healy	Jul	Aug	>40 nm	None	None	NA	None	Chukchi Sea	David.Forucci@uscg.mil, 206 217 6648	Scot Tripp
USCG Healy	Aug	Sep	4 nm, Pt Hope and Pt. Barrow	None	None	NA	None	Chukchi Sea	David.Forucci@uscg.mil, 206 217 6648	rpickart@whoi.edu , (508)289-2858
USCG Healy	Sep	Oct	> 40 nm	None	None	> 40 nm	None	Canada Basin, Deep water	David.Forucci@uscg.mil, 206 217 6648	Pworcester@ucsd.edu , 858-534-4688
USCG Healy	Oct	Nov	> 40 nm	None	None	NA	None	Beaufort Sea	David.Forucci@uscg.mil, 206 217 6648	Badiey, Mohsen [badiey@udel.edu],
NOAA Oscar Dyson	None	11 May 2017-31 May 2017,	None	None	None	None	None	Aleutians and Bering Sea fisheries	Chiefops.mop@noaa.gov, 541 867 8703	EcoFOCI Spring Mooring Cruise 2017 (DY-17-04)
NOAA Oscar Dyson	None	07 Sep 2017-17 Sep 2017	None	None	None	None	None	Aleutians and Bering Sea fisheries	Chiefops.mop@noaa.gov, 541 867 8703	EMA/FOCI age-0 Groundfish and Salmon Recruitment Processes (DY-17-07 - Leg 2)
NOAA Oscar Dyson	None	21 Sep 2017-TBD	None	None	None	None	None	Bering Sea 70m Isobath near Pribilof Islands	Chiefops.mop@noaa.gov, 541 867 8703	EcoFOCI Fall Mooring Cruise 2017 (DY-17-08)

The “Research Matrix” is an important tool developed through the AWSC. This Matrix allows hunter groups to see which research operators and vessels will be coming into local waters each year.




Mirai track





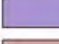





The Matrix provides maps with planned routes and provides contact information in case we need to reach the vessel operator or the research team to suggest changes to their routes.

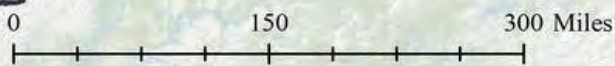


Legend

 Approximate VHF Range

Call-in Areas

 Kivalina	 Point Hope
 Wainwright	 Kaktovik
 Point Lay	 Nuiqsut/Deadhorse
 Kotzebue	 Barrow
 Wales	 Savoonga





Quyanaqpak