



# AIS Applications on R/Vs

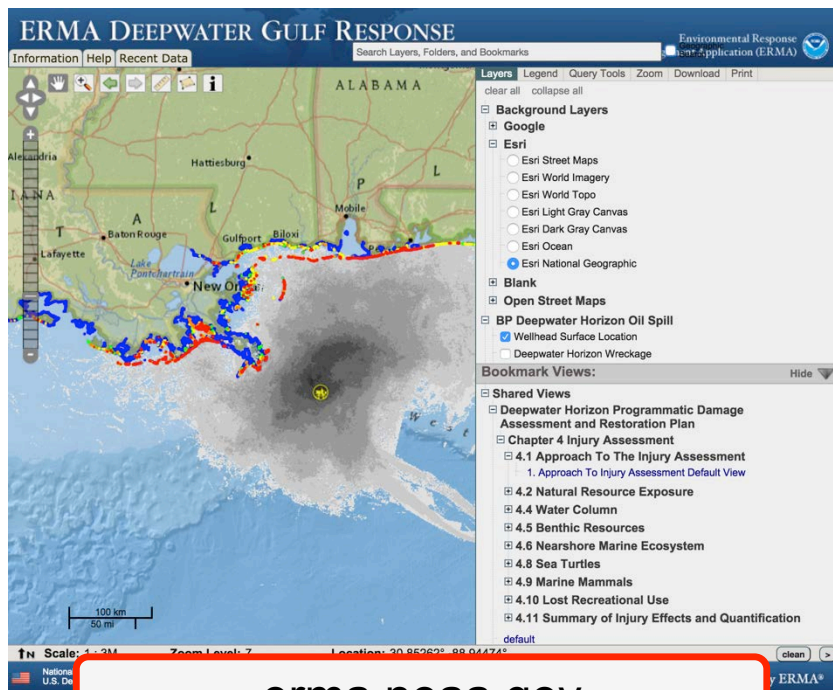
Kurt Schwehr  
RVTEC, Miami, FL  
November 2015



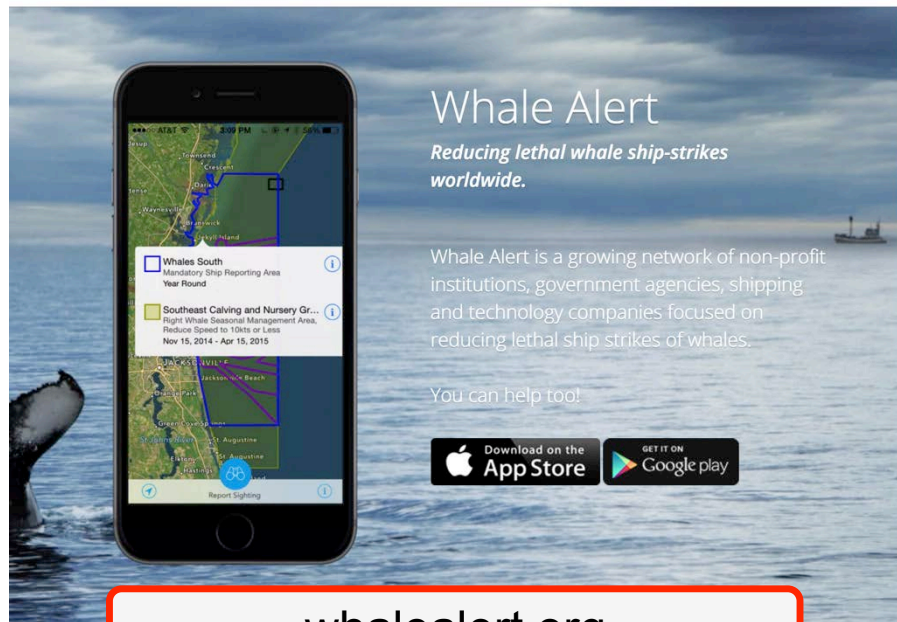
# Who am I?



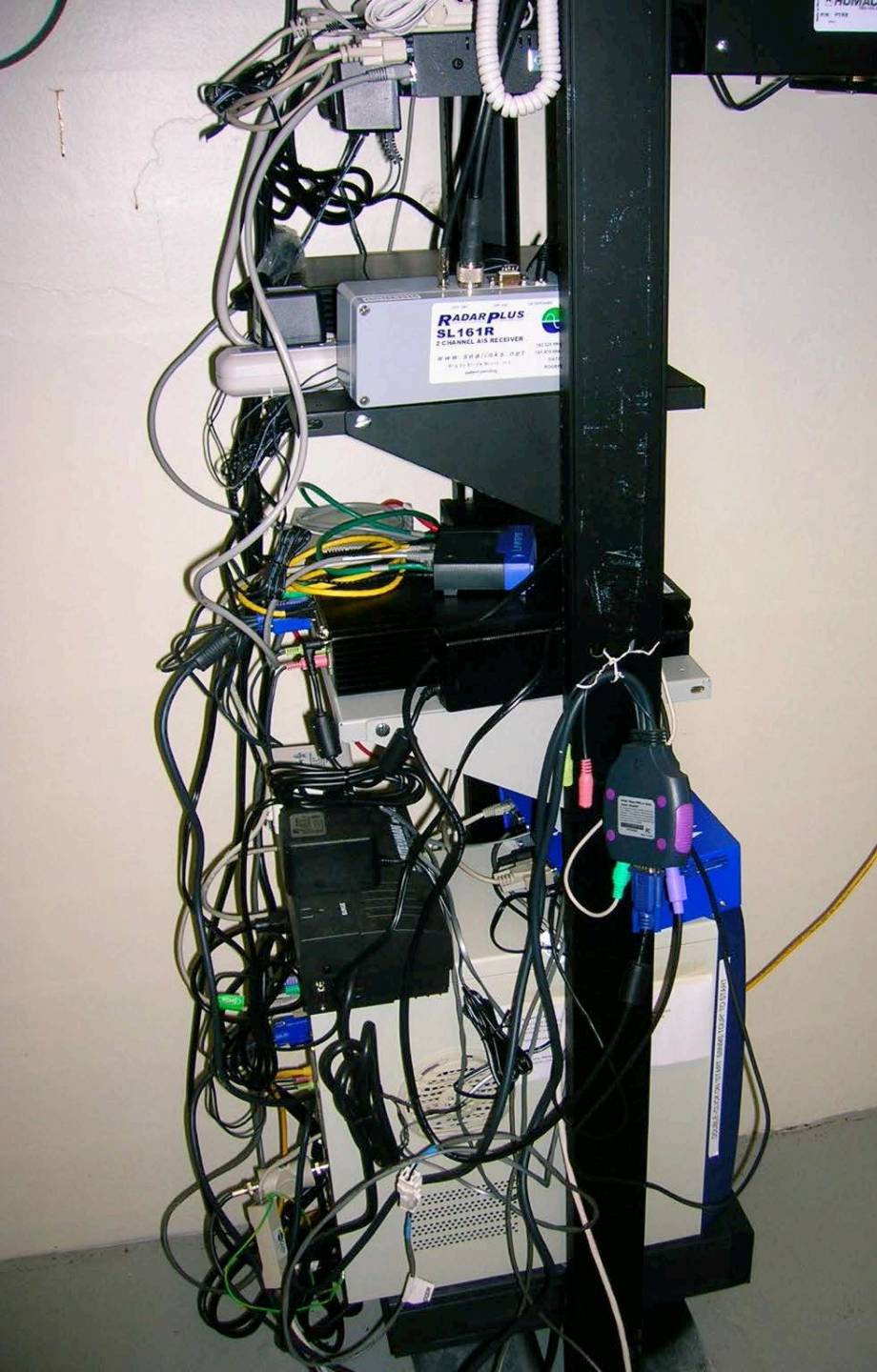
[www.globalfishingwatch.org](http://www.globalfishingwatch.org)



[erma.noaa.gov](http://erma.noaa.gov)



[whalealert.org](http://whalealert.org)





**Kurt Schwehr**  
schwehr

New England  
schwehr at gmail.com  
http://schwehr.org/blog  
Joined on Sep 6, 2010

39 Followers 27 Starred 13 Following



Contributions Repositories Public activity Edit profile

Find a repository... Search All Public Private Sources Forks Mirrors New

**noadata** Python ★ 7 5  
Pure python AIS decode and encode  
Updated 20 hours ago

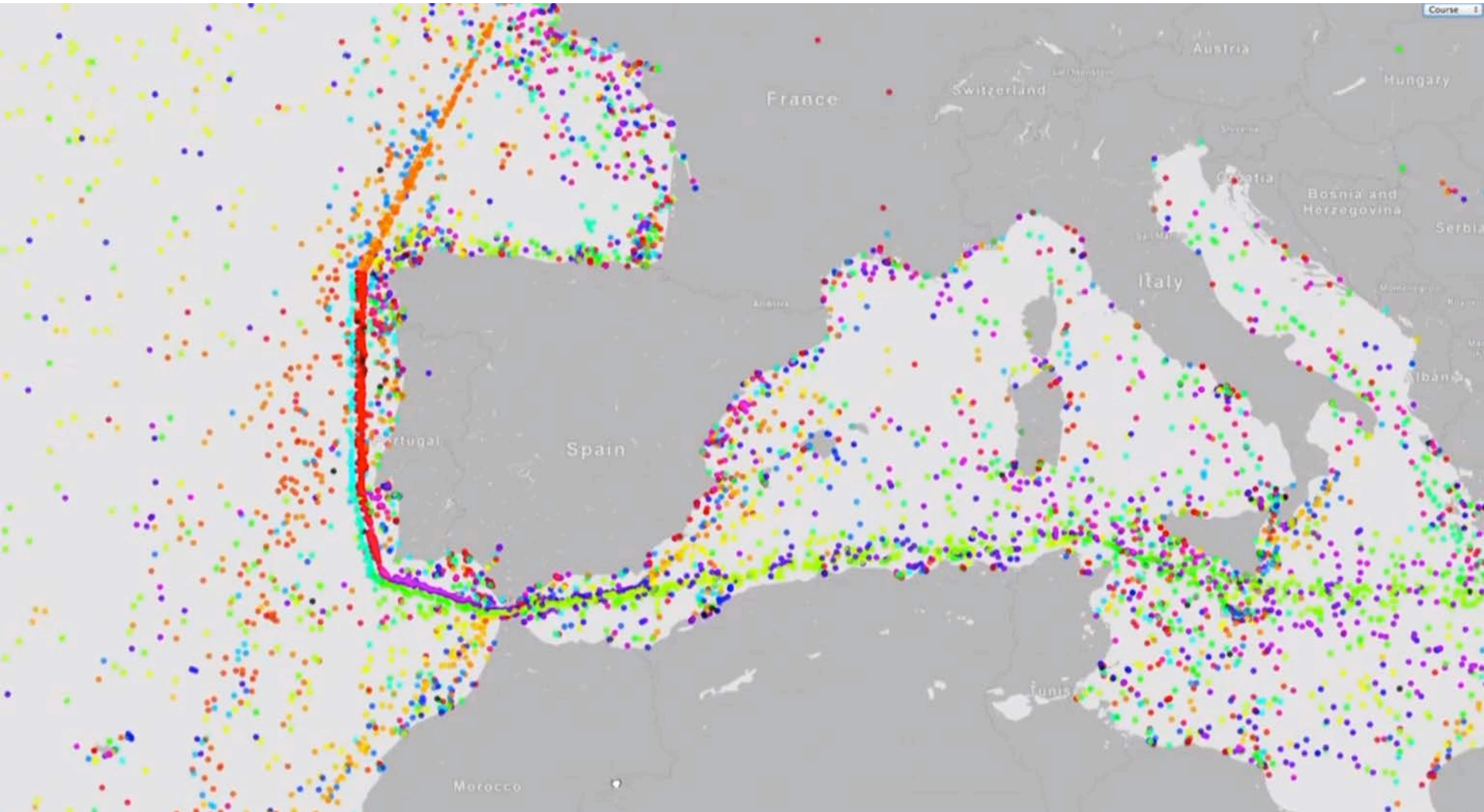
**libais** C++ ★ 22 16  
C++ decoder for Automatic Identification System for tracking ships and decoding maritime information  
Updated 8 days ago

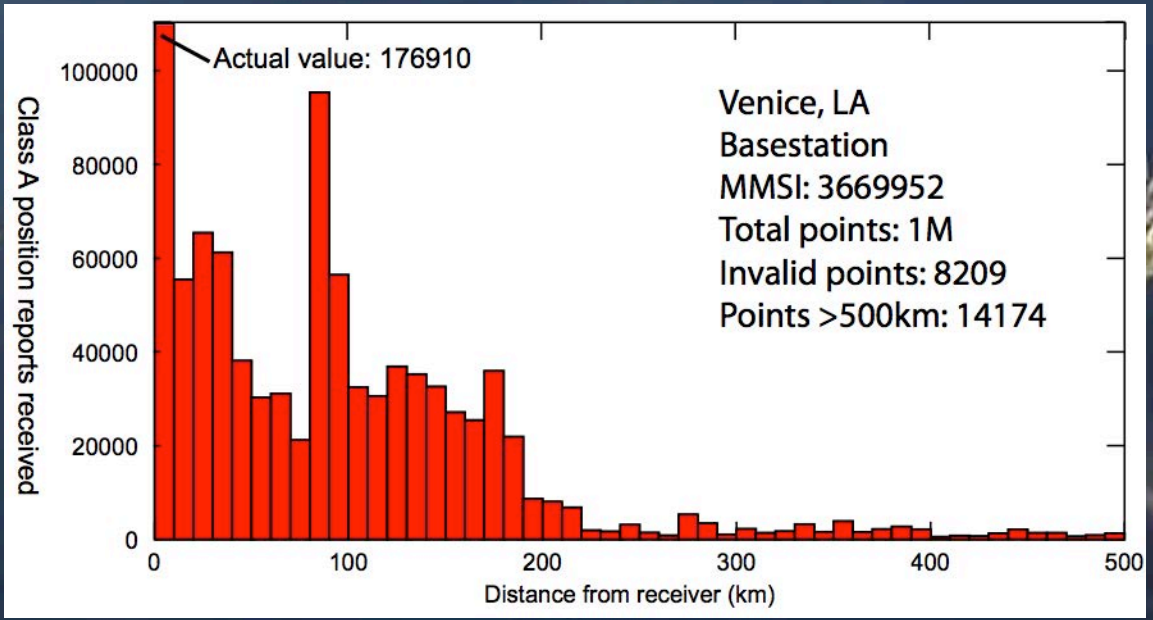
**ais-area-notice**  
Reference library for the IMO Circ 289 AIS Binary Message for timed z  
Updated 11 days ago

**generic-sensor-format**  
Sonar Generic Sensor Format (gsf) codec  
Updated 16 days ago

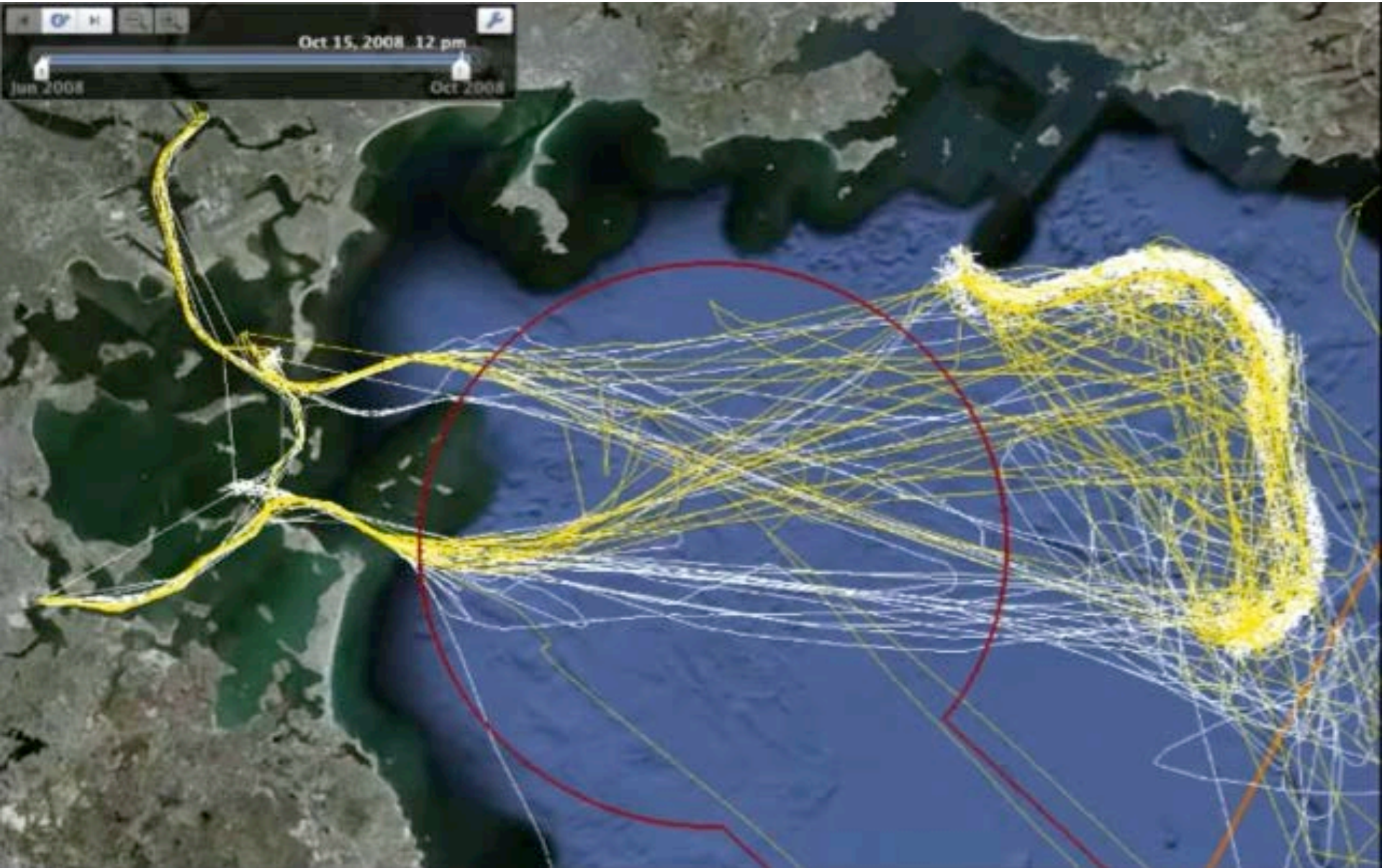
**bitvector**  
Updated 16 days ago

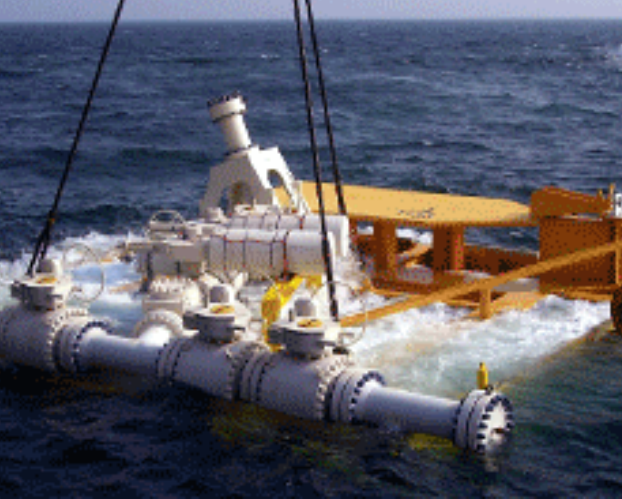






Oct 15, 2008 12 pm  
Jun 2008 Oct 2008







Fly to e.g., 1600 Pennsylvania Ave, 20006

▼ Places

Add Content

- ▶  3304-636091349
- ▶  3305-636091349
- ▶  3306-636091349
- ▶  3307-636091349
- ▶  3308-636091349
- ▶  3309-636091359
- ▶  3310-636091359
- ▶  3311-636091371
- ▶  3312-636091389
- ▶  3313-636091394
- ▶  3314-636091394

▼ Layers

- ▶  Primary Database
- ▶  Geographic Web
- ▶  Roads
- ▶  3D Buildings
- ▶  Street View
- ▶  Borders and Labels
- ▶  Traffic
- ▶  ...

✕

**Transit 3312 : 636091389**

**MMSI:** 636091389

**Transit point range:** 2715789 to 2717047

**Time range:** 2008-09-06T04:50:24Z to 2008-09-06T06:09:49Z

**Total pos reports:** 784

**SOG:** 13.6 to 14.8

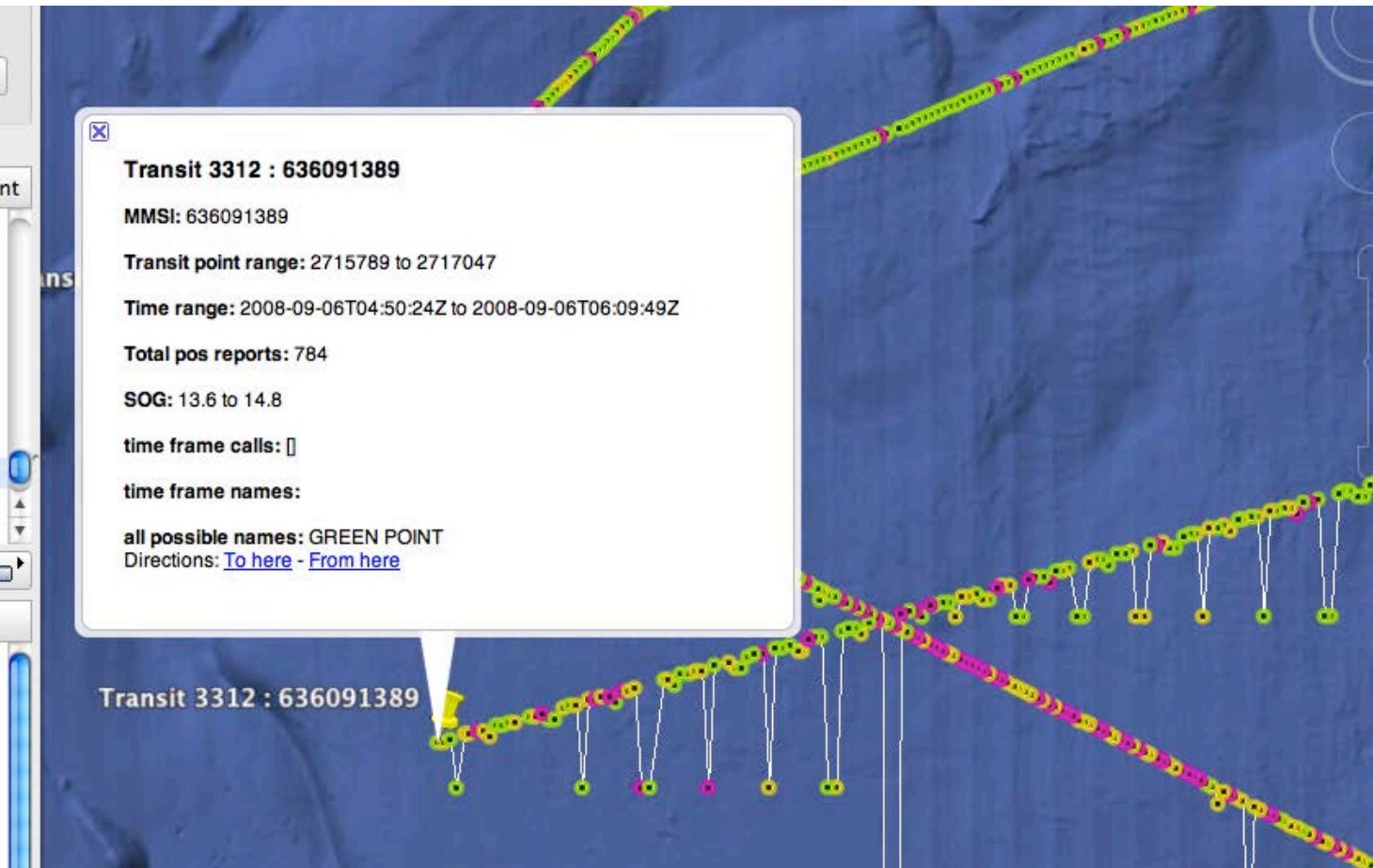
**time frame calls:** []

**time frame names:**

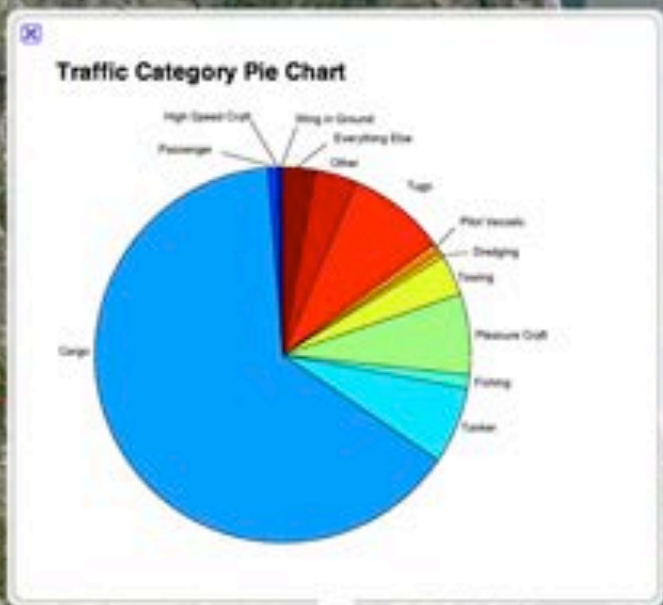
**all possible names:** GREEN POINT

Directions: [To here](#) - [From here](#)

Transit 3312 : 636091389



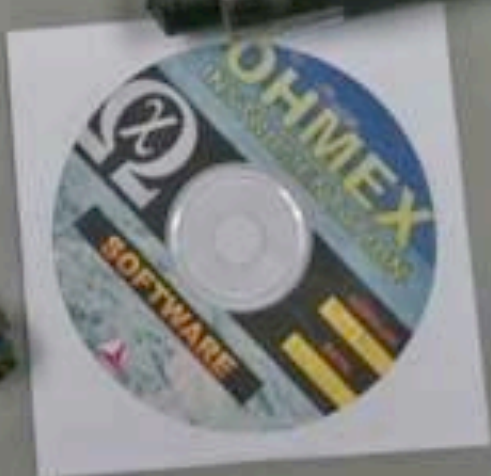
- Cargo
- Tanker
- Pilot Vessels
- Tugs



13.4 km

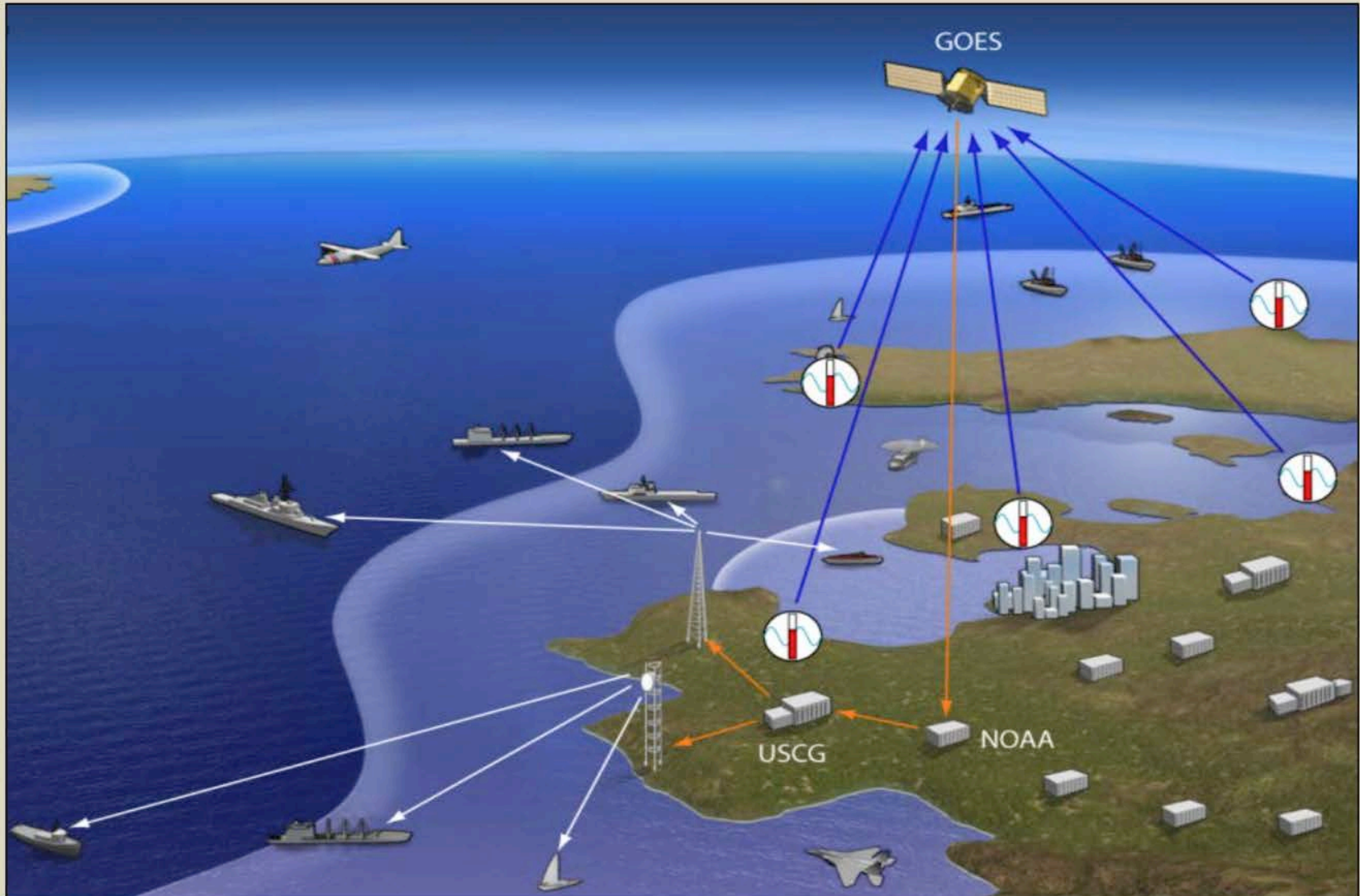
Data USA Traffic Category Pie Chart  
 Image © 2009 DigitalGlobe  
 Image © 2009 Commonwealth of Virginia

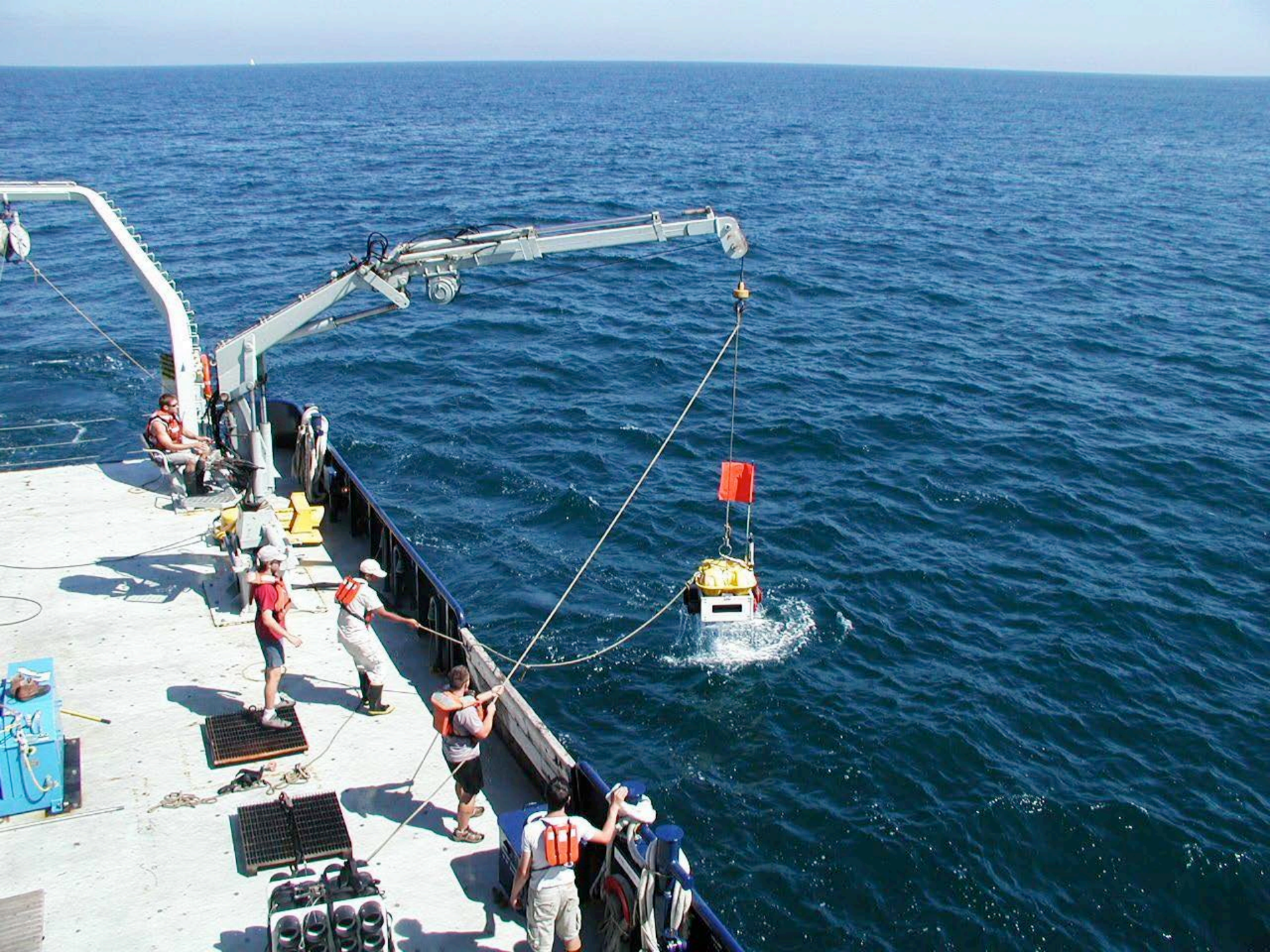
© 2009 Google





# PORTS<sup>®</sup> Data Through Coast Guard's Automatic Identification System (AIS)

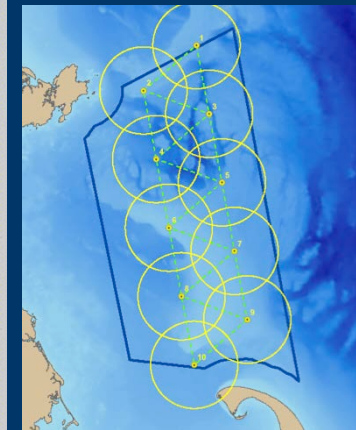
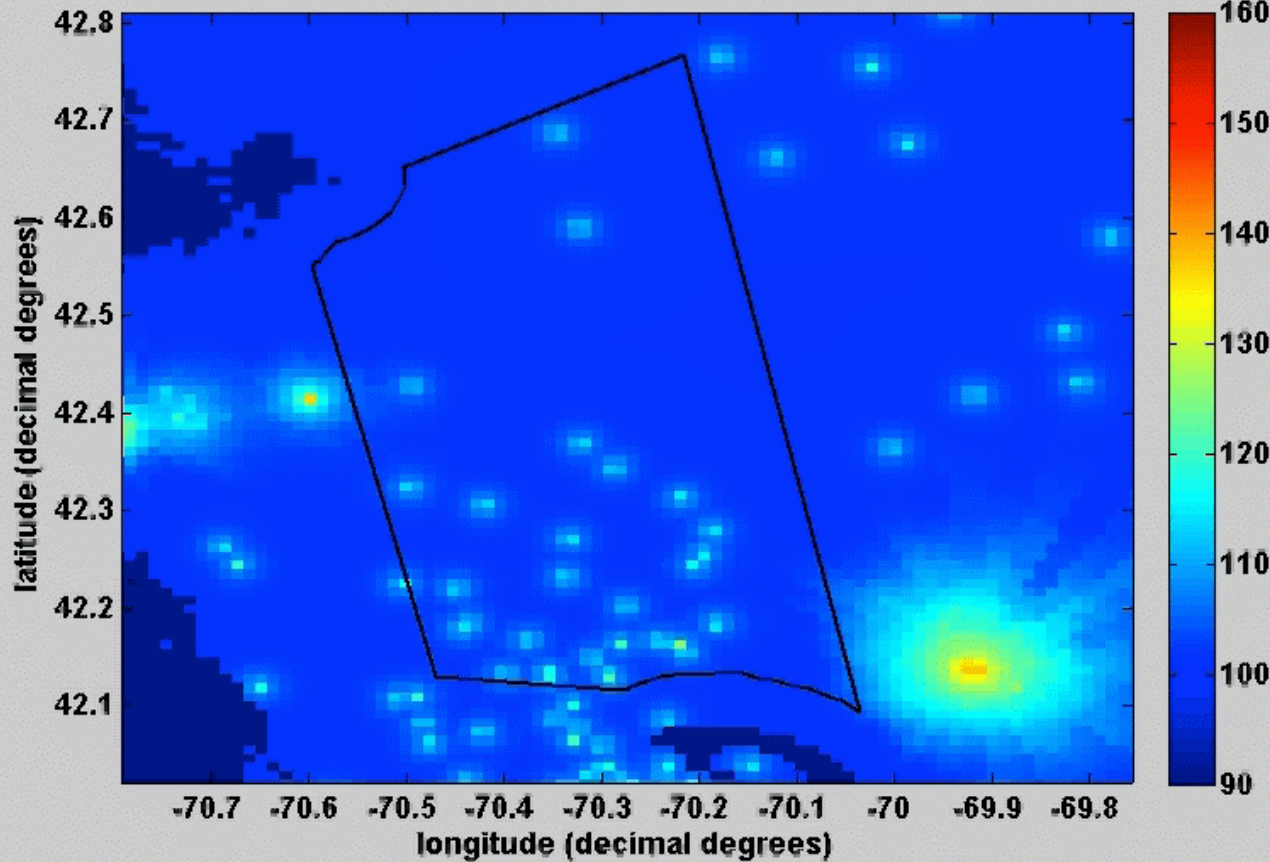






# National Marine Sanctuaries National Oceanic and Atmospheric Administration

Right Whales Only = 03-Apr-2008 18:10:00 to 03-Apr-2008 18:20:00



# Additional Information

2014 presentation: [Video Slides](#)

2013 Google I/O ships presentation: [Video](#)

2013 Google I/O WebGL for ships: [Video](#)

2009 AIS risk analysis: [Paper Slides](#)

[More papers](#) on AIS and maritime topics