

# Rolling Deck to Repository

2015 RVTEC Update



# Cruise Catalog

- retired *New Horizon*, *Knorr*, *Melville*
- *Point Sur* moved to LUMCON
- *Sikuliaq* joined
- NOAA test project with *Ron Brown*, *Okeanos*
- *Falkor* joined
- started profiles for *Armstrong*, *Sally Ride*
- crossdeck six older vessels



Alpha Helix (retired)



Atlantic Explorer



Atlantis



Blue Heron



Cape Hatteras (retired)



Clifford A. Barnes



Corwith Cramer



Endeavor



Eltanin (retired)



F.G. Walton Smith



Falkor



Healy



Hugh R. Sharp



Ka`imikai-O-Kanaloa



Kilo Moana



Knorr (retired)



Laurence M. Gould



Marcus G. Langseth



Maurice Ewing (retired)



Melville (retired)



Moana Wave (retired)



Nathaniel B. Palmer



New Horizon (retired)



Oceanus



Okeanos Explorer



Pelican



Point Sur



Robert C. Seamans



Robert D. Conrad (retired)



Robert Gordon Sproul



Roger Revelle



Ronald H. Brown



Savannah



Sikuliaq



Thomas G. Thompson



Vema (retired)



Thomas Washington (retired)



Wecoma (retired)



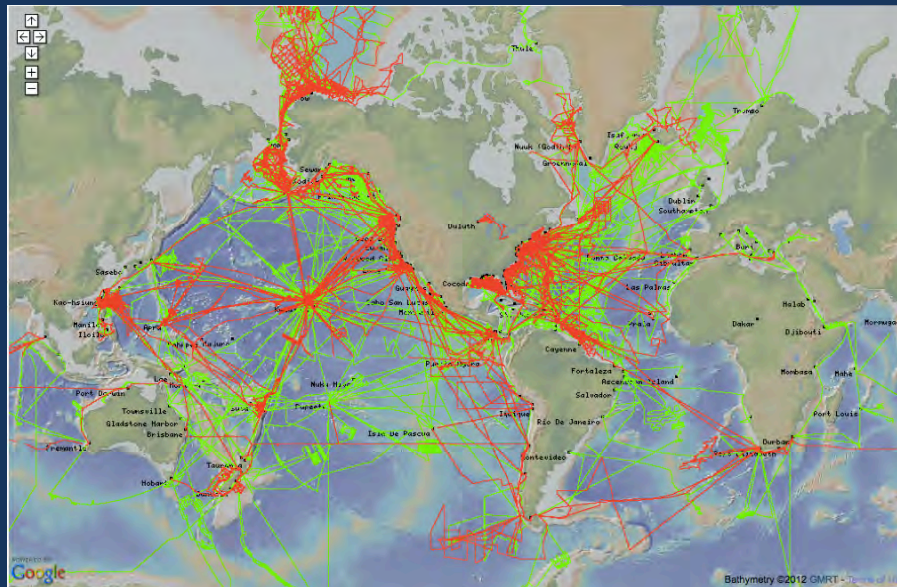
# Data Types/Volume

Currently:

- 25 In-Service Vessels
- ~400 Cruises/Year
- ~400 Instrument Systems

Total as of November 2015:

- 5,822 Cruises
- 20.1M Files Archived



- New cruises since R2R launch in 2009
- Additional/ legacy cruises

Instrument Types:

- ADCP
- Anemometer

Camera

- CTD
- Expendable Probe
- Flowmeter
- Fluorometer
- GNSS /INS
- Gravimeter
- Gyrocompass
- Magnetometer
- Met Station
- Multibeam
- pCO2

Radar

- Radiometer
- Rain Gauge
- Singlebeam
- Speed Log
- SSV
- Thermometer
- Timeserver
- Transmissometer
- TSG





# Development Work

- Released Nav Manager code <http://github.com/rvdata>
- Launched Vessel Profiler <http://tech.rvdata.us>
- Started publishing Digital Object Identifier (DOI) for every cruise
- Dropped Vessel Tracker page
- All operators now submitting Cruise Personnel Manifests, R2R provides annual summary to UNOLS Office



# Community Projects

- EarthCube – build new tools to find +reuse research data



R2R participates in EarthCube projects

- SeaView
- GeoLink
- X-DOMES

Goal: Link cruise data across repositories, raise visibility of the US academic fleet

- ODIP – interoperability between national/regional fleets



# Looking Ahead

- Upgrade R2R server/network infrastructure for ever-increasing data volumes
- Add search interface to Web site
- WG to define spec for end-of-cruise instrument summary ?
- Advisory Panel meeting (SIO early 2016), will include reps from RVTEC and NCEI



# Acknowledgements



[info@rvdata.us](mailto:info@rvdata.us)

