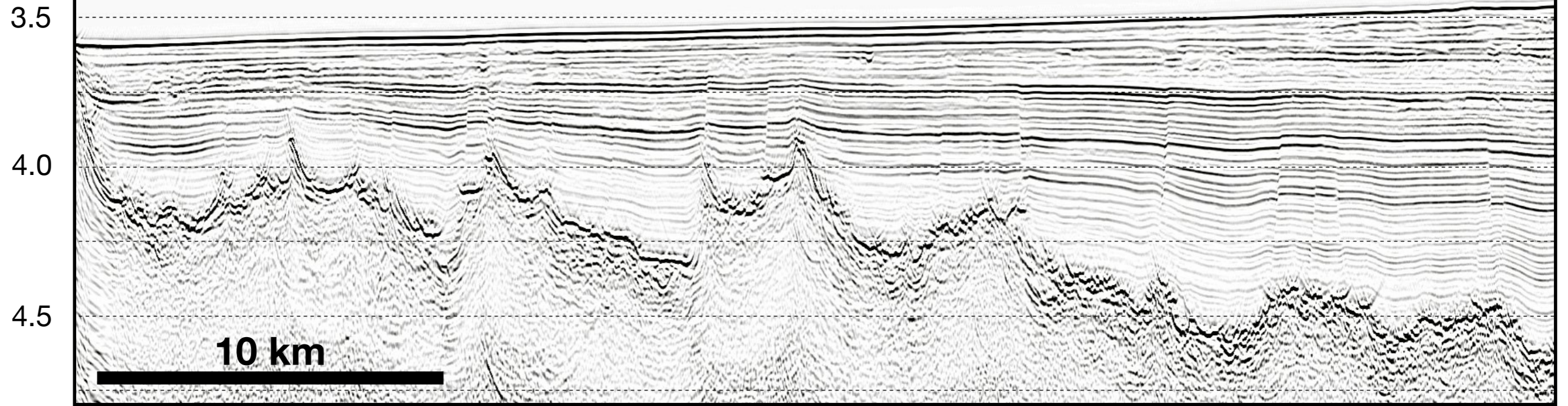
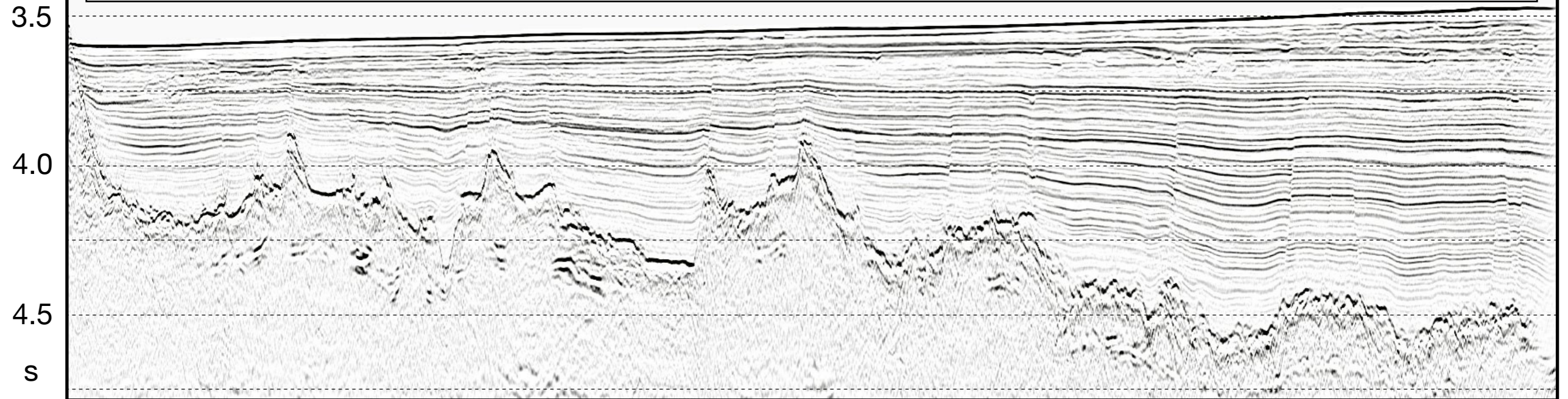
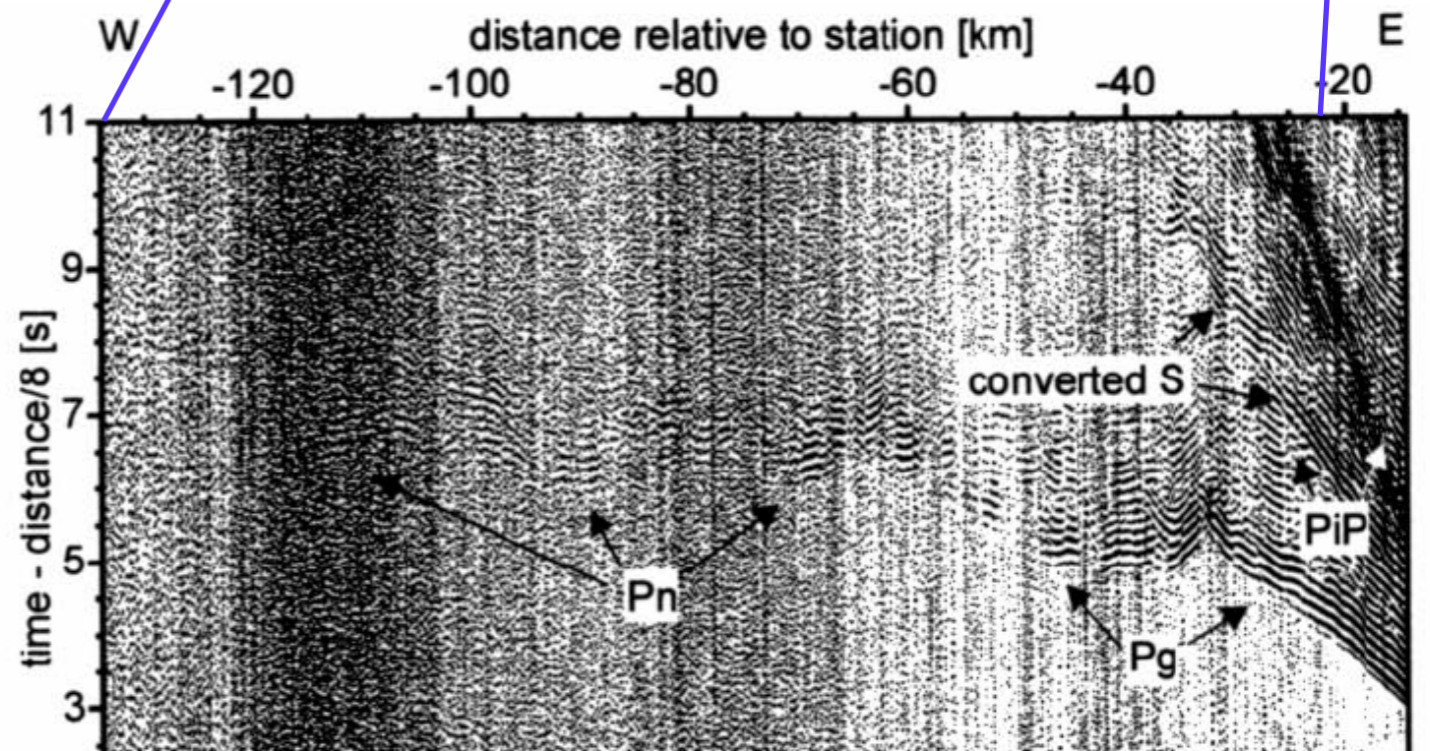
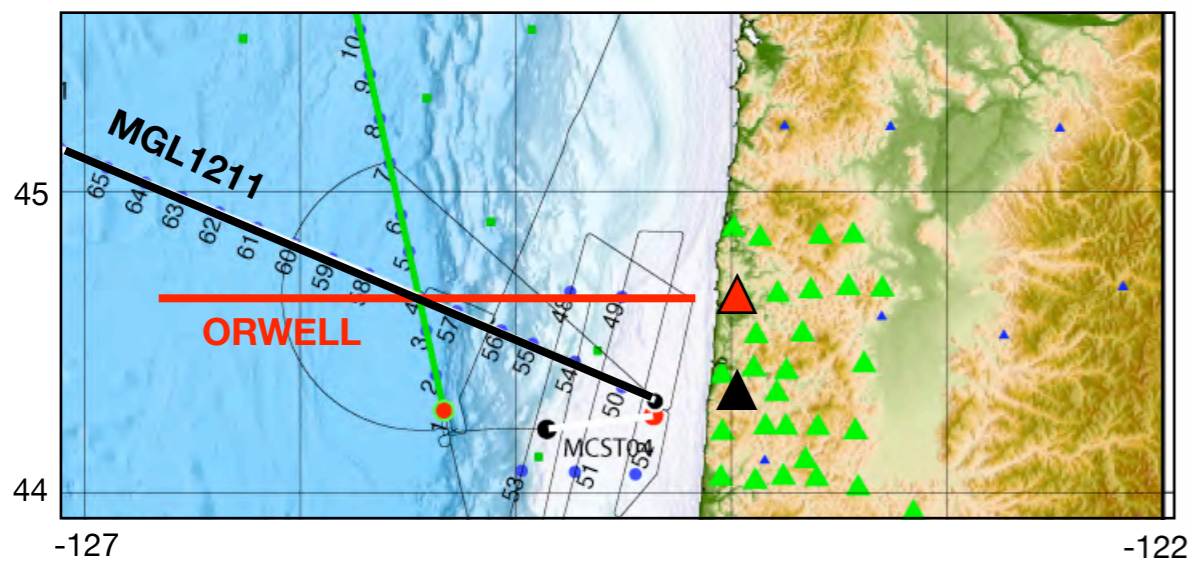
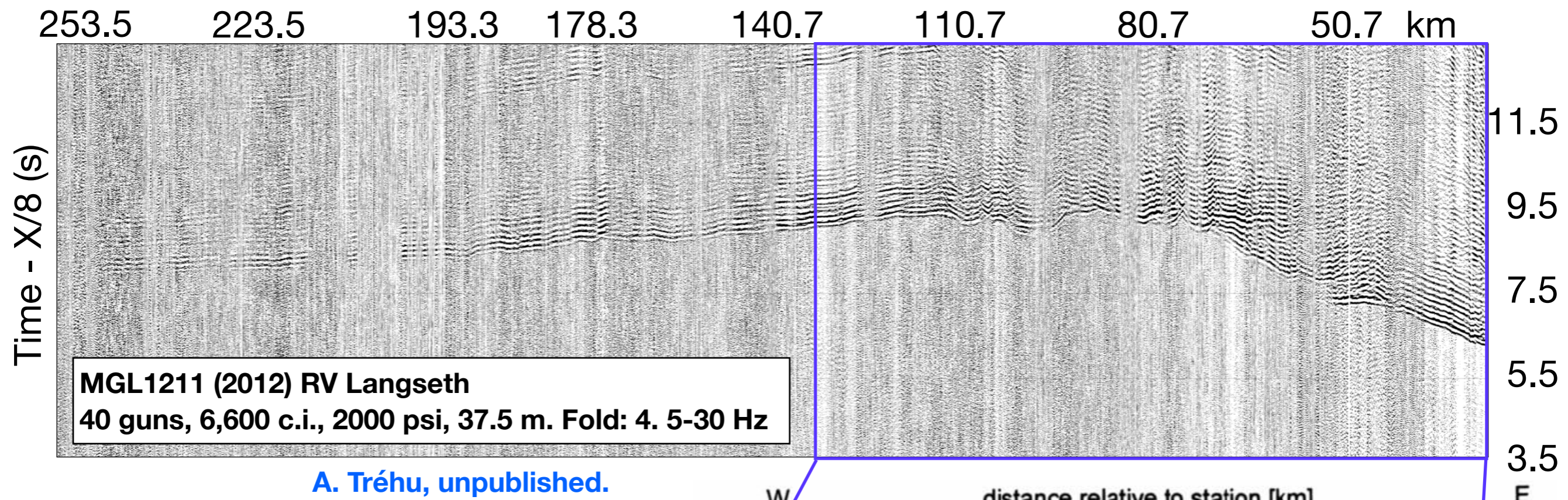


2012 RV Langseth 40 guns, 6,600 c.i., 2000 psi, 37.5 m. 636 channels. Fold: 105



2001 RV Ewing 10 guns, 3,005 c.i. 37.5 m. 480 channels. Fold: 80





ORWELL (1996) RV Sonne. 16 guns, 6,350 c.i., ~140 m?. Fold: 1. 2-6-16-24 Hz

Gerdom et al., 2000

