



UNCLASSIFIED



U.S. National/Naval Ice Center



USN



USCG



NOAA

LT Jonathan Lloyd
Operations Officer



UNCLASSIFIED



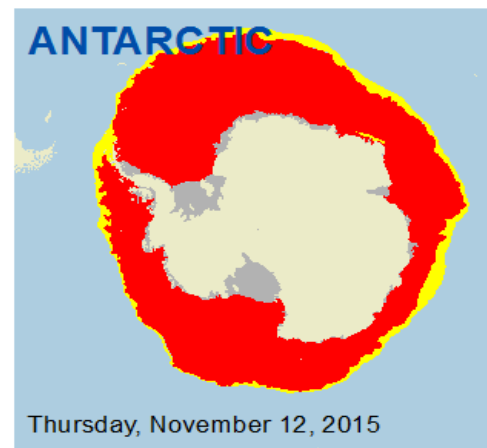
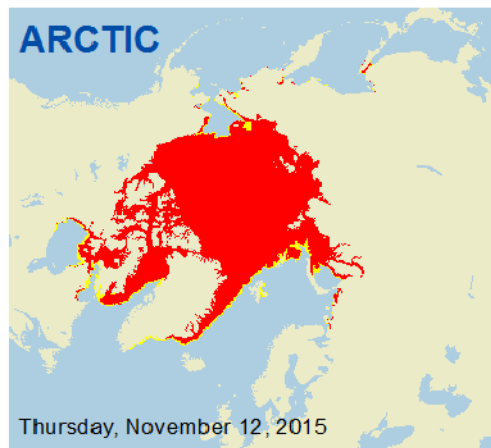
U.S. National Ice Center

Mission

The U.S. National Ice Center (USNIC) provides global to tactical scale ice and snow products, ice forecasting, and other environmental intelligence services for the United States government.

Vision

To be the U.S. government's premier source of global ice and snow products and services.



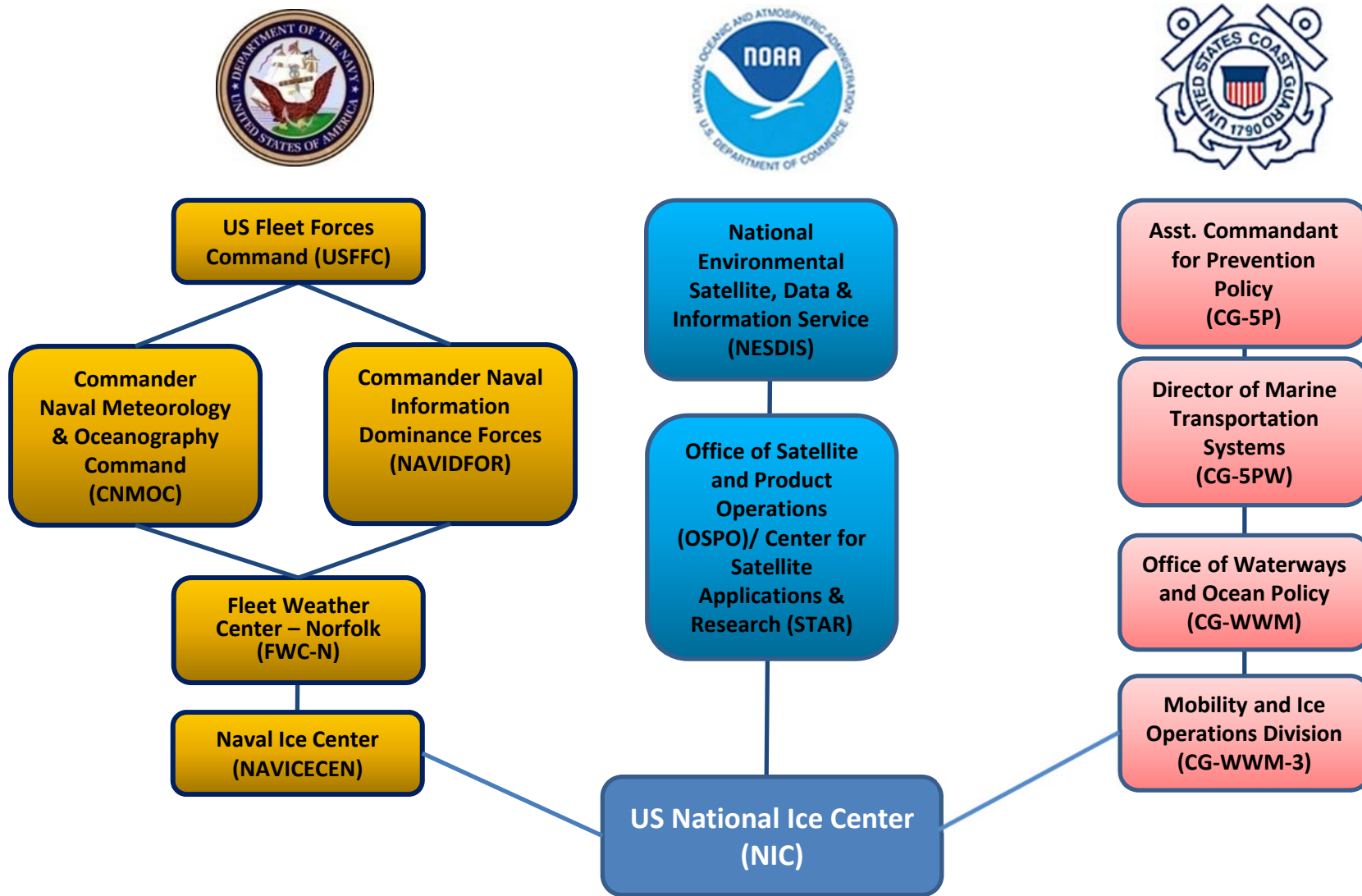
Coverage 20.6 Million Square Miles – Arctic, Antarctic, and Great Lakes



UNCLASSIFIED



USNIC Organization

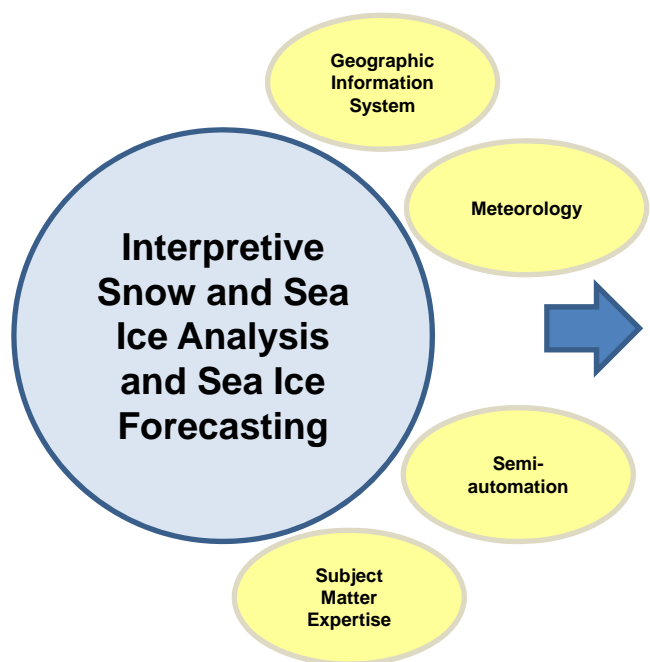
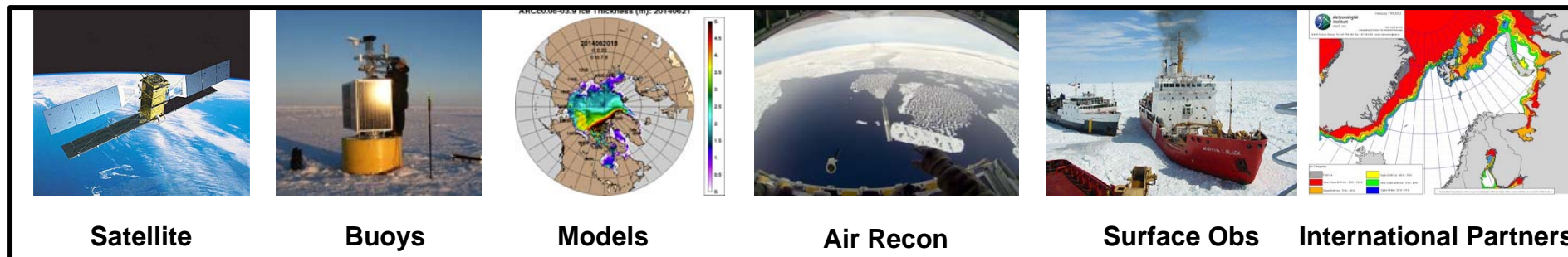




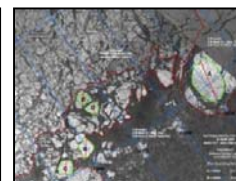
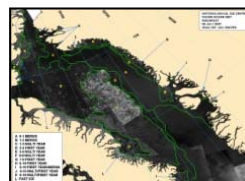
UNCLASSIFIED



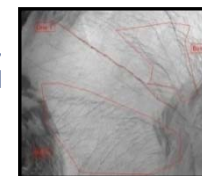
Product Generation



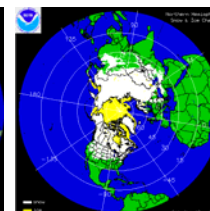
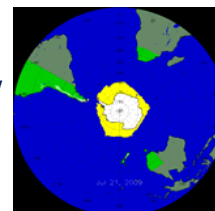
Annotated Images



Fractures, Leads and Polynyas (FLAP)

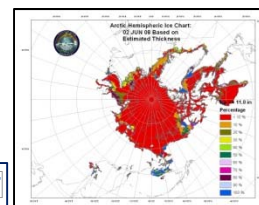
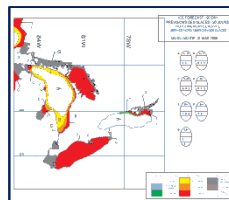


Automated Snow and Ice products

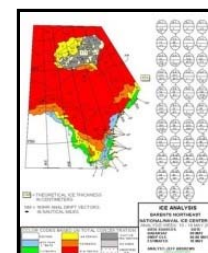
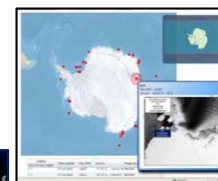
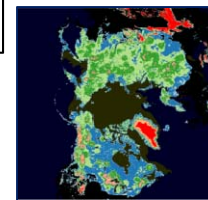


Blended Snow and ice cover

Ice Thickness Estimations



Antarctic Icebergs



Hemispheric and Regional Ice Charts

Ice Outlooks

Blended Snow Depth



UNCLASSIFIED



Icebreaker Support

- Ice Concentration, Ice Edge, Estimated Ice Thickness, Route Recommendation.
- Short Term Forecast (72 hr).
- Various Formats
 - KML, KMZ, shapefile
 - Annotated imagery tailored to meet customer needs
- Healy/Sikuliaq
 - FTP imagery from MDA
 - NIC is obtaining a Mr SID license
 - Expand delivery of imagery to SENTINEL



UNCLASSIFIED



Requesting Support

The screenshot shows the website header with the text "U. S. NATIONAL ICE CENTER" and "NAVAL ICE CENTER". The navigation menu includes "HOME", "ORGANIZATION", "SERVICES", "PRODUCTS", "OUTSIDE LINKS", and "CONTACT US". The "SERVICES" section is expanded, showing a list of options: "Access Support", "Products", "Request Special Support", and "Support". A red arrow points to the "Request Special Support" link. The main content area features a large image of a NOAA building with a "NOAA" sign. The footer contains links to "United States Navy", "NOAA", "United States Coast Guard", "Contact NIC Command Duty Officer (CDO)", "weather.gov", "NOAA Privacy Policy", "USA.gov", and "Ready.gov". A Department of Commerce logo is also present in the bottom right corner.



UNCLASSIFIED



Request For Support Form

National Ice Center Request for Support

If you are unable to complete the entire form at this time, please submit with information that you have and email nic.cdo@noaa.gov after submission with changes. This form can only be submitted once.

* Required

Date of Request *

Month [v] Day [v] 2015 [v] [m]

Primary Contact *

[text input]

E-Mail Address of Primary Contact *

[text input]

Phone Number

[text input]

Project or Mission Title *

[text input]

Department/Agency *

[dropdown menu]

E-Mail Address For Wider Distribution *

Please provide all email addresses that you wish to receive the support (separated via semicolon).

[text area]

Area of Operations *

Please be specific, i.e. (MODLOC, OPAREA, PIM, Latitude and Longitude Coordinates) Please provide maps or attachments via nic.cdo@noaa.gov (Please name attachments using the "project or mission title").

[text area]

Mission Type *

What type of an mission is this support for?

- Exercise Support
- Operational Support
- Research Support
- Other: [text input]

Mission Details *

Please provide as much details as possible to the mission we are supporting so we can assist in tailoring support for you.

[text area]

Type of Support Requested *

- Annotated Imagery
- Ice Edge
- Marginal Ice Zone
- Other: [text input]

Frequency *

How often do you want to receive the requested support?

[dropdown menu]

Delivery Time

Please be specific in the "other" box if you require product by a certain time.

- AM EST
- PM EST
- Other: [text input]

Support Start Date *

Month [v] Day [v] 2015 [v] [m]

Support End Date *

Month [v] Day [v] 2015 [v] [m]

Delivery Method *

- E-Mail
- Download via WWW
- Upload/Download via FTP (please provide FTP address in additional information below)
- Other: [text input]

Additional Information

Please provide specific requirements for your request to include file type (e.g. jpeg, shp, tiff, pdf, etc)

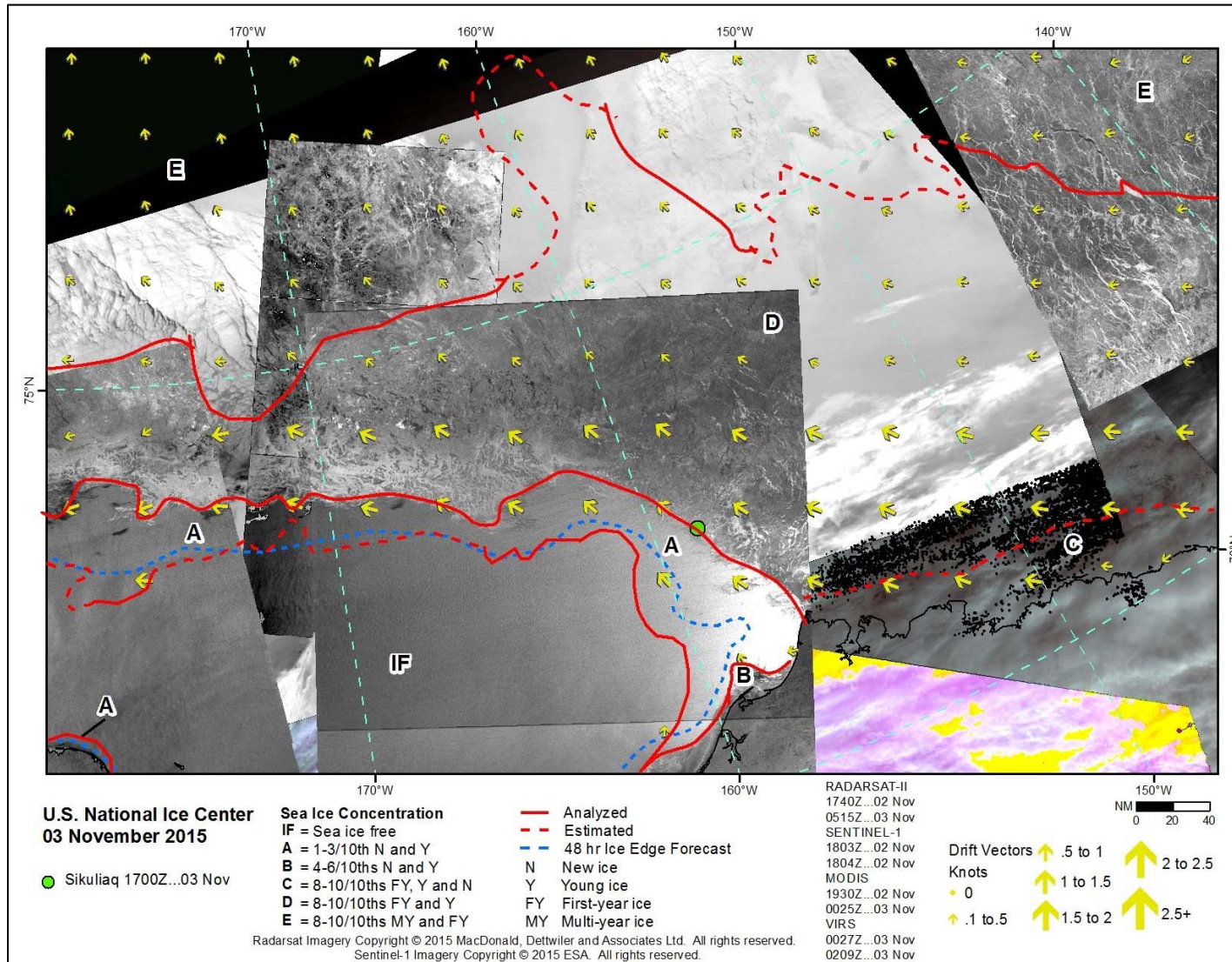
[text area]



UNCLASSIFIED



Support Products





UNCLASSIFIED



Data Available From NIC Website

- Daily Products
 - Ice Edge and Marginal Ice Zone
 - ASCII
 - Shape Files
 - JPEG
 - KMZ
- Weekly Products
 - Hemispheric Analysis
 - Shape Files
 - KMZ
 - Alaskan Charts
 - PDF

UNCLASSIFIED



Discussion



Contact Information:
LT Jonathan Lloyd
Jonathan.lloyd@noaa.gov
301-817-3952 (office)
301-456-6218 (work cell)