

RDC Arctic Planning Map

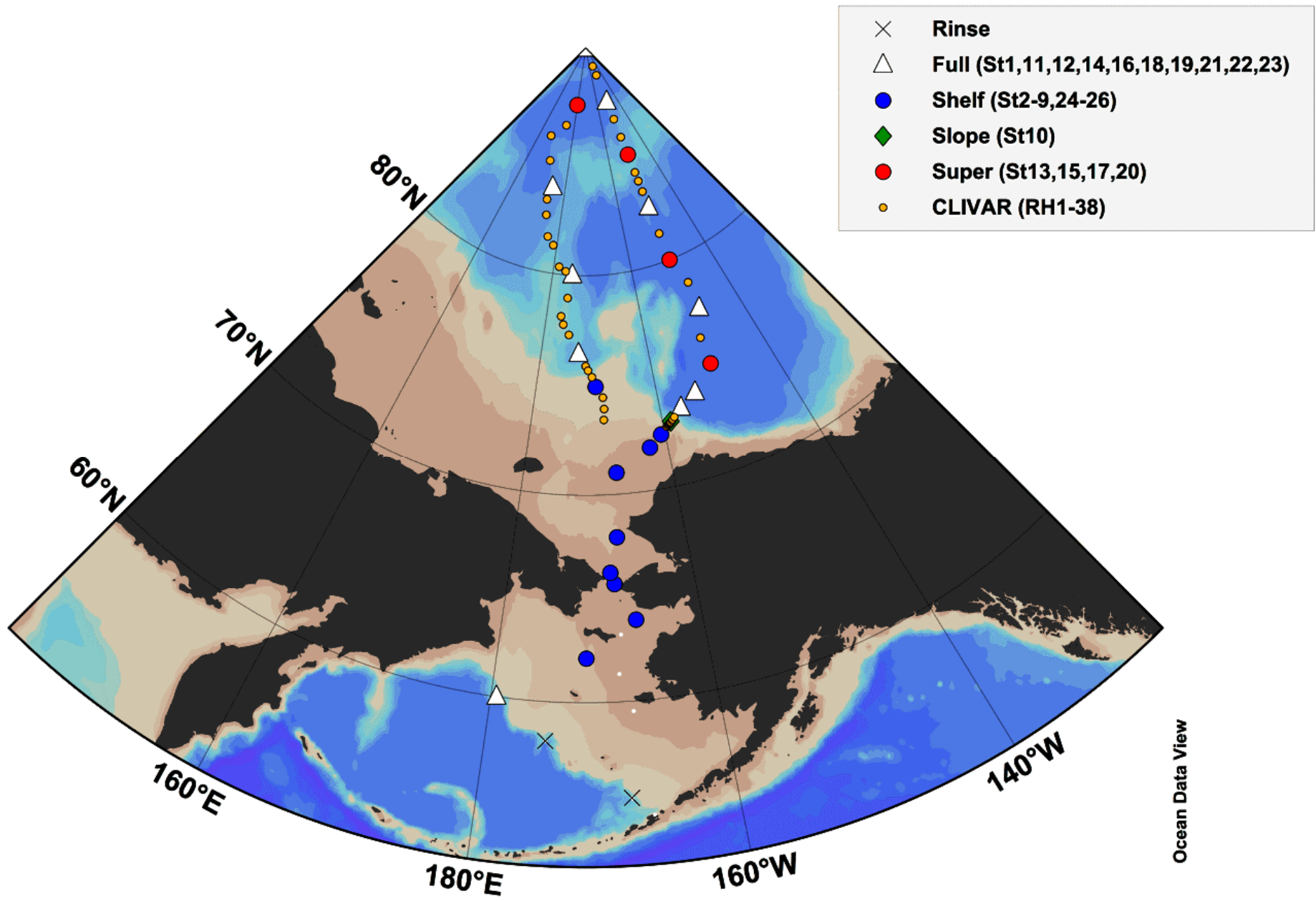
For Planning Purposes Only

This will not be the ships exact route



2015 RDC

- [2.1 NOAA Buoy Deployment \(PMEL, Drifters, CTD Cast\) 10](#)
- [2.2 NOAA Wave Glider \(Quantity 2\) 14](#)
- [2.3 NOAA PUMA Operations 18](#)
- [2.4 SAR Exercise \(Oliktok Point\) 21](#)
- [2.5 MUOS Testing 22](#)
- [2.6 HF-ALE GOTHAM Model Verification 23](#)
- [2.7 DTCS Connectivity Demonstration 24](#)
- [2.8 Automatic Identification System \(AIS\) 26](#)
- [2.9 UA Fairbanks: Sea Ice Analysis 29](#)
- [2.10 UA Anchorage: Atmospheric Isotope Analysis 30](#)
- [2.11 SHARC \(Wave Glider\) 31](#)
- [2.12 Additive Manufacturing 34](#)
- [2.13 FC470 Electric Propulsion Boat for Shore Transfer 35](#)

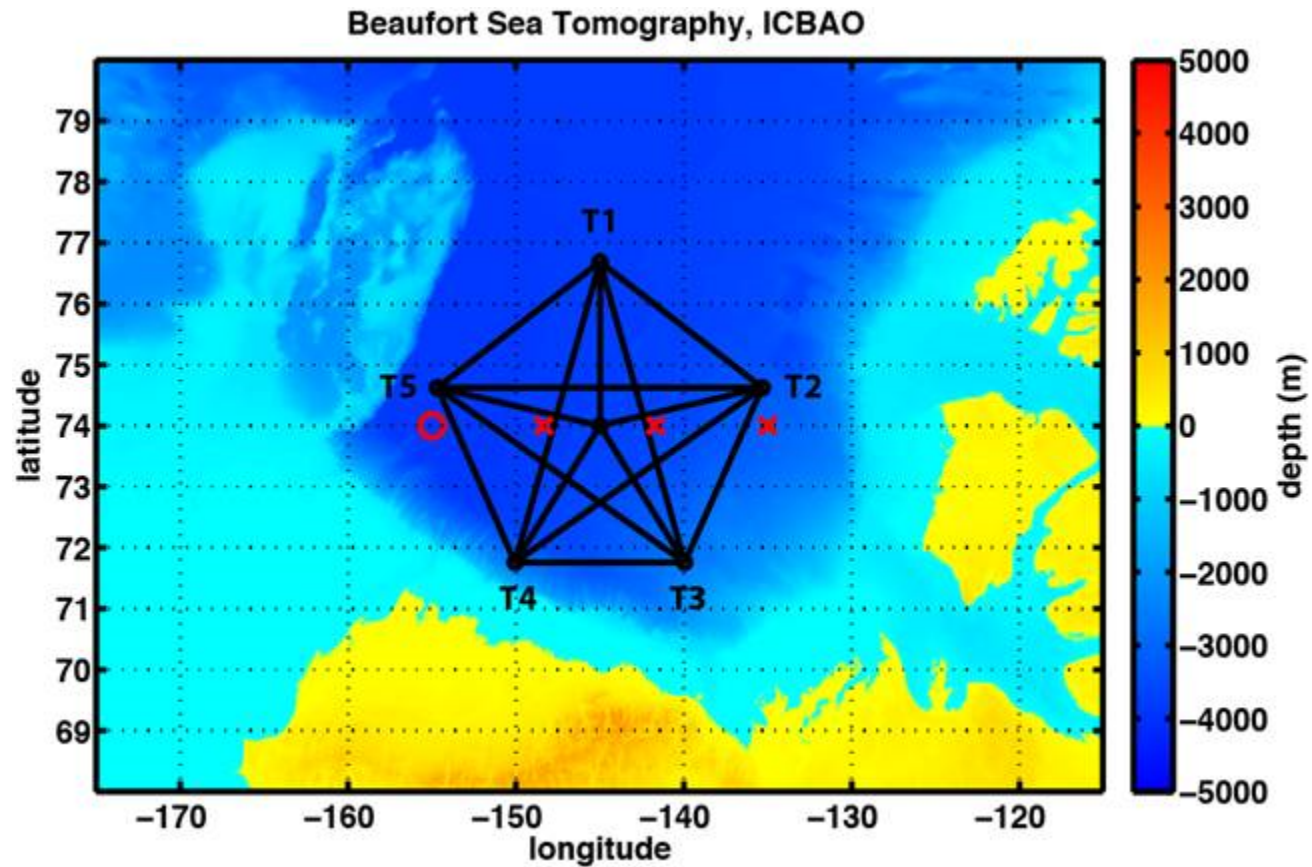


MARES- BOEM - 6/1/16 - 36 days-
(latest start 6/15, earliest start 6/1)-
Dutch

CANAPE- Navy- 8/15/16 - 29 days-
(latest start 9/1, earliest start 8/1)-
Dutch

Hopcroft- NOAA- Ocean Exploration
9/1/16 32 days reaching 78 N (latest
start 9/8, earliest start 8/1)- Barrow

CANAPE 2016



NOAA OE
2016

