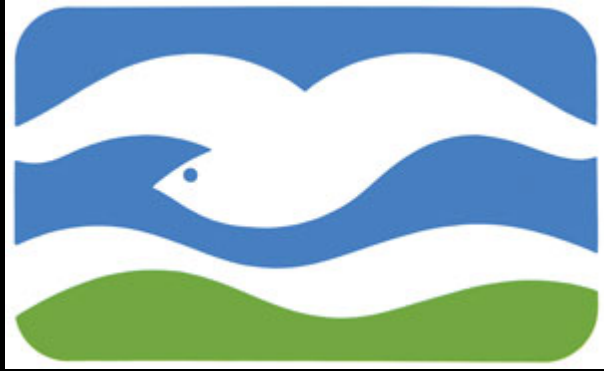


The title 'EBOAT REVOLUTION' is rendered in a bold, orange, 3D-style font. The letters are arranged in two lines: 'EBOAT' on top and 'REVOLUTION' below. Five blue, thin, curved lines arc over the text, starting from the left and ending on the right, creating a sense of motion or a stylized wave.

EBOAT REVOLUTION

Rethinking the Power of
Electric Boats





**EBOAT
REVOLUTION**

Eboats for Rowing Market

Specific design parameters:

15 mph

Minimum wake

Safety launch

Operated on calm water - often
reservoirs



**EBOAT
REVOLUTION**



Eboat Development

Gives us a look at how to approach sustainable tech integration

Hull Form - Cat to Tri

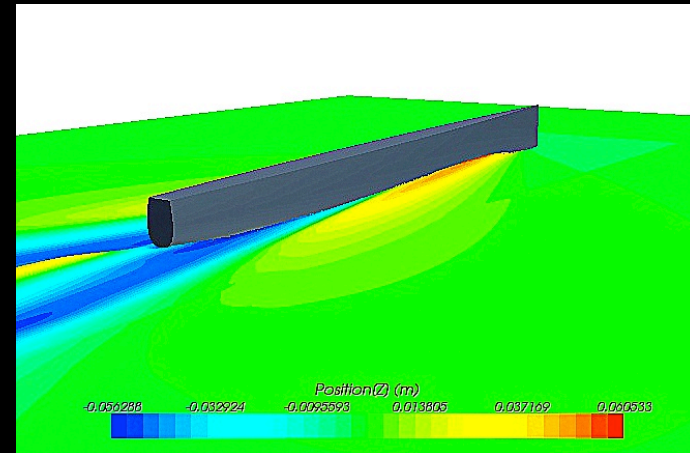
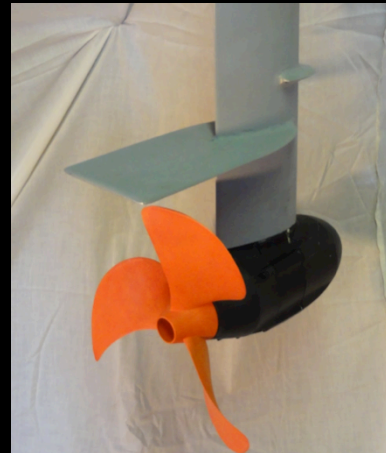
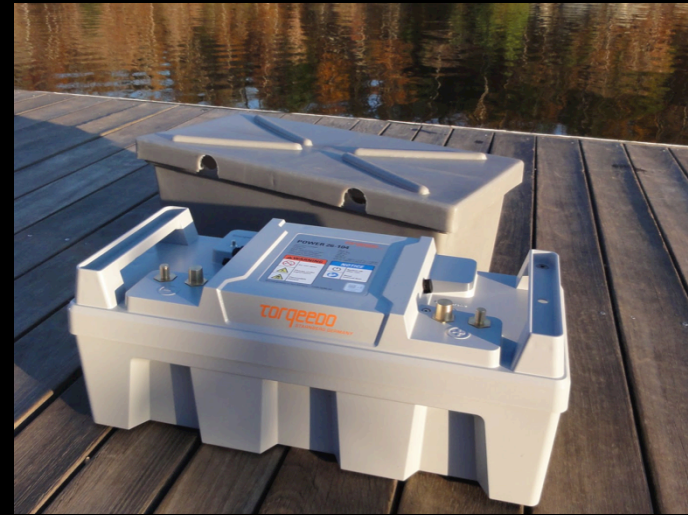
Battery Storage

Cavitation and Ventilation

Spray plate and spray rail

Corrosion and electrolysis

**EBOAT
REVOLUTION**





EBOAT
REVOLUTION

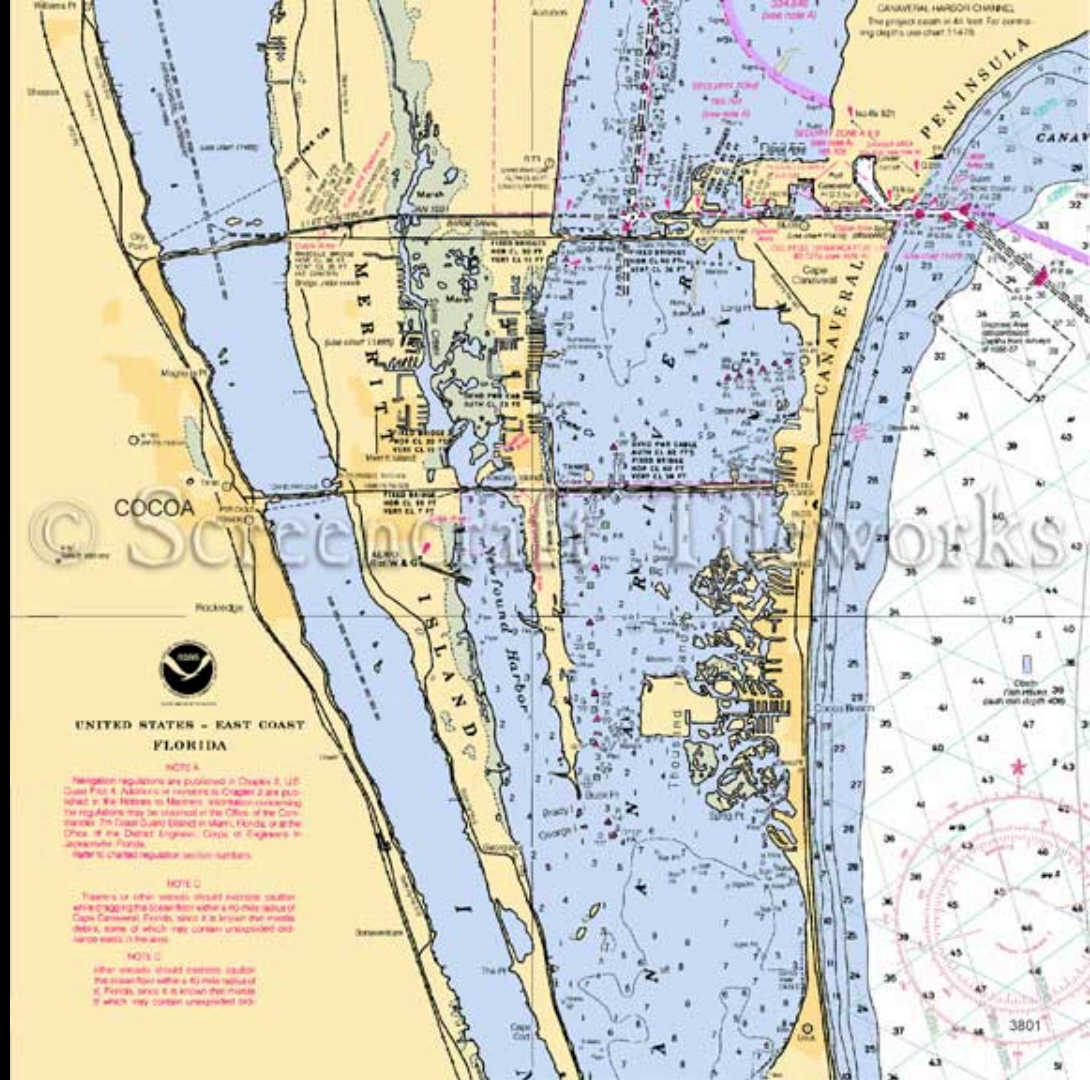
Benefits of Eboat Experience

Low noise permits a rowing coach to hear the crew



Eboats and Nature

Early Testing yields unexpected insight



EBOAT
REVOLUTION

Lesson Learned - Beer is Louder than Eboat



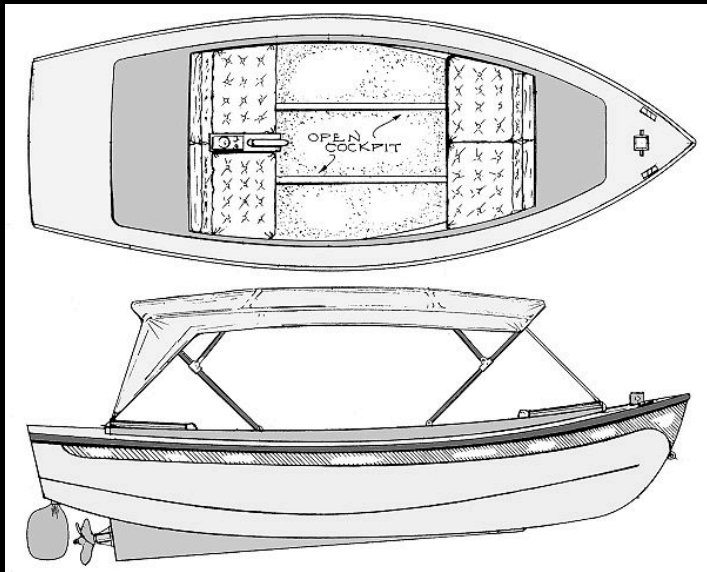
**EBOAT
REVOLUTION**



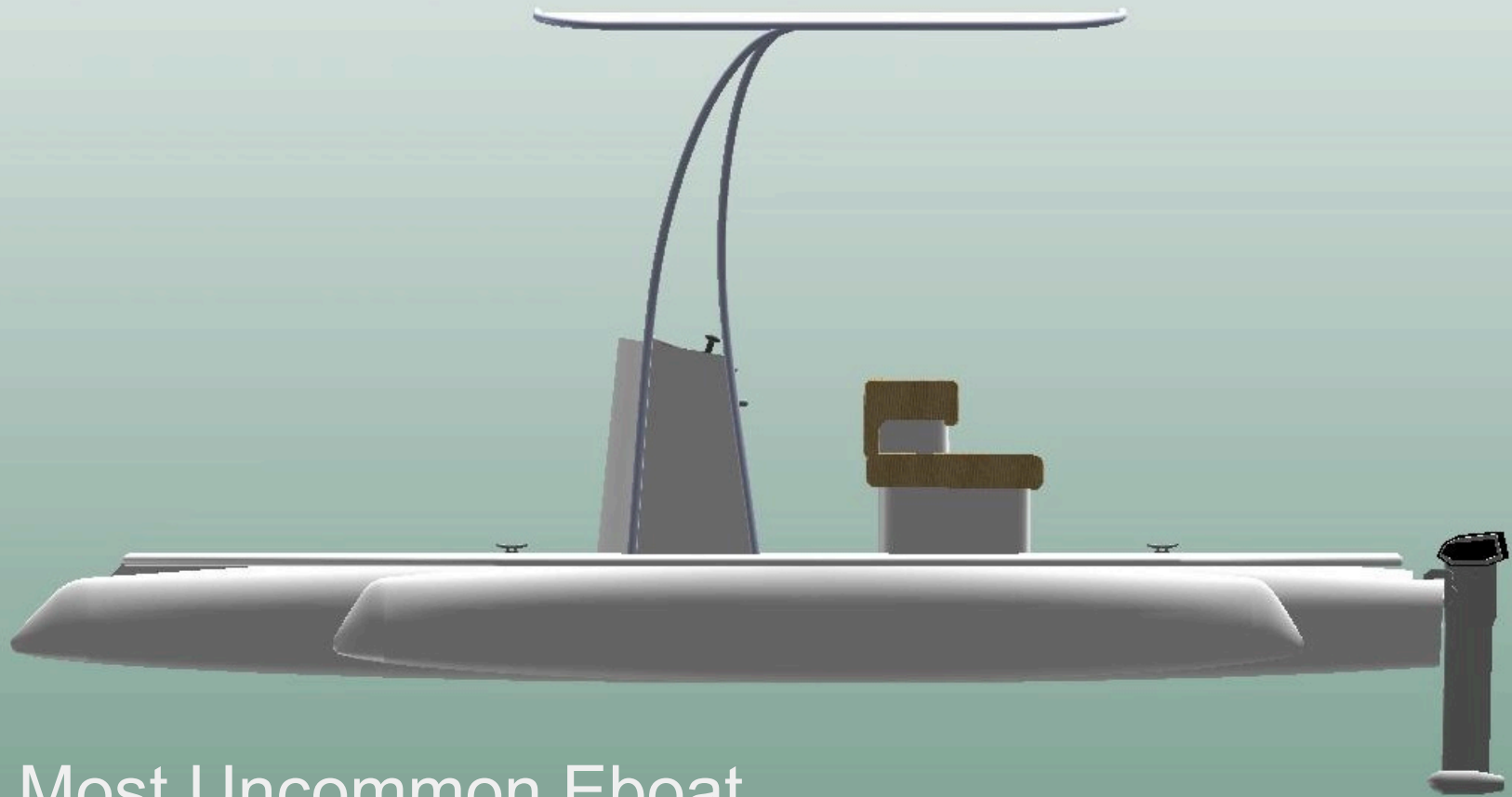
© ERIC CHEN
JETTARASIT P. 2004

W. CONNELL

Most Common Eboat



**EBOAT
REVOLUTION**



Most Uncommon Eboat



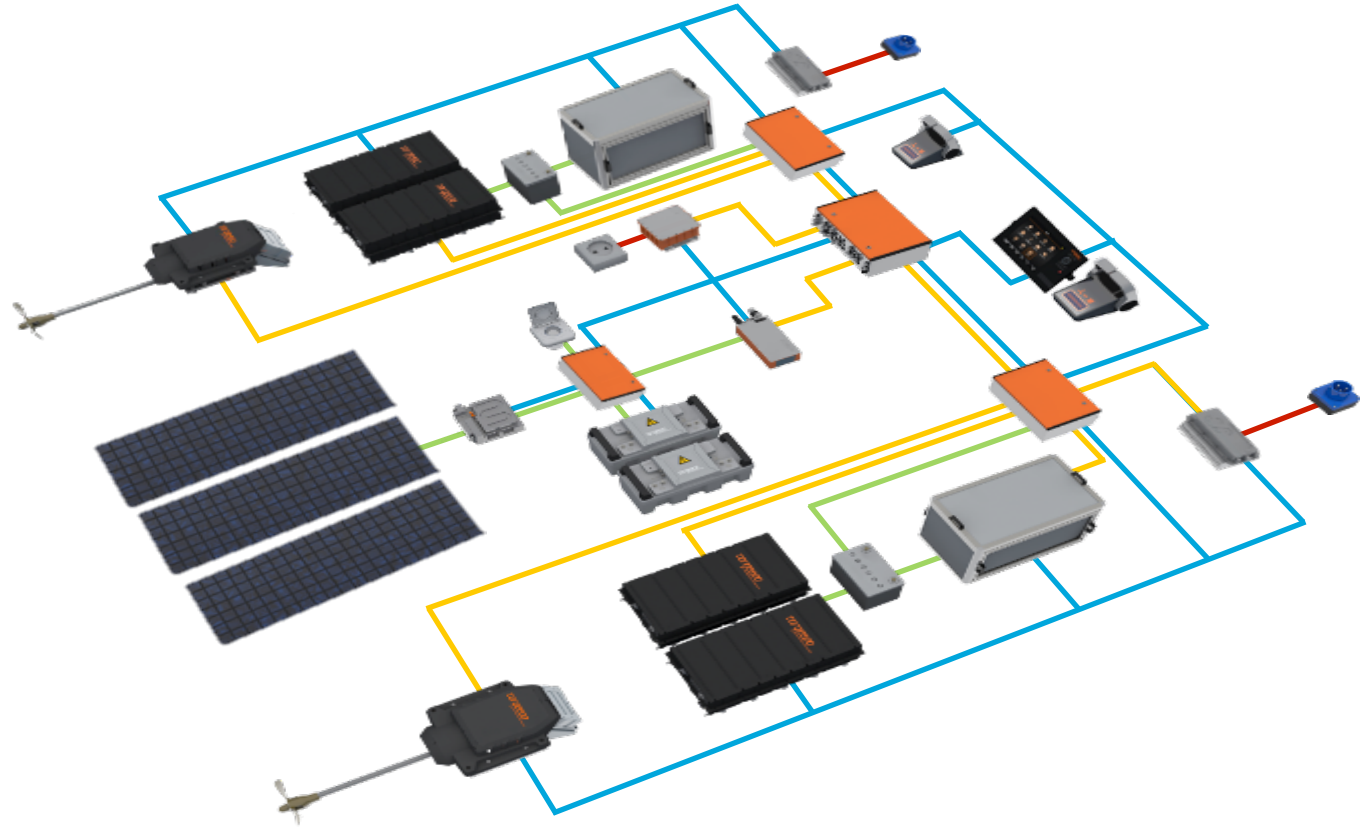
Deep Blue Hybrid – Full System Architecture

Multi Voltage System:

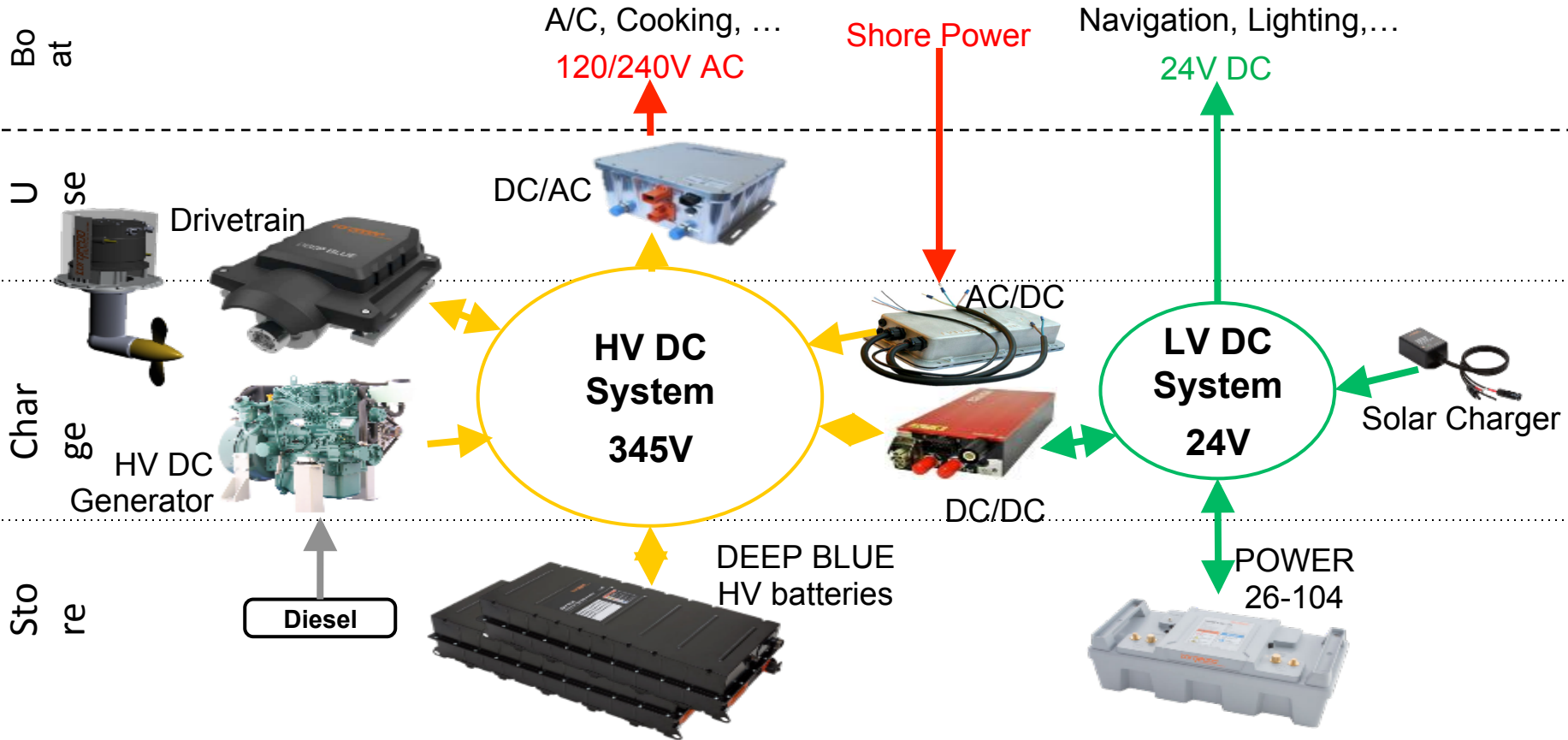
- 345 vdc
- 24 vdc
- 240/120vac
- 12 vdc
- Data bus

Example config:

- Twin Deep Blue 80i propulsion systems
- 51.2 kWh HV DC battery capacity
- Twin 20 kW HV DC generators
- 5.4 kWh LV DC battery capacity



Deep Blue Hybrid – Voltage Hub View



Thinking Eboat v Petroboat

Operations

Capabilities

Equipment

Large but limited reservoir of power

Slow turning, high static thrust vs high rpm

Power collection underway



**EBOAT
REVOLUTION**

Turnkey is the Key

There will be continuous fine tuning of hull forms etc what is needed is a concerted effort to make marine sustainability plug and play, easy to use, Turnkey, so you don't have to be an expert to employ the technology.



NAVY



Human Powered Shells



**EBOAT
REVOLUTION**



Rivanna Romp - 11/15/2015

©www.row2k.com

Pre-Test Configuration



**EBOAT
REVOLUTION**

Damage Assessment



An Eboat Success Story



EBOAT
REVOLUTION



**EBOAT
REVOLUTION**

The image features the text "EBOAT REVOLUTION" in a bold, orange, 3D sans-serif font. The text is arranged in two lines: "EBOAT" on top and "REVOLUTION" below it. Overlaid on the text are several light blue, glowing, circular loops that appear to be made of a thin wire or string. These loops are arranged in a series of overlapping arches, with each loop passing over the top of a letter in the top row and under the bottom of a letter in the bottom row, creating a sense of depth and movement. The background is solid black.