

CPS Ship Support

Dr. Karl Newyear, UIC Science Chief Scientist

Anna Schemper, CPS Science Project Manager



AICC Meeting Seattle, WA November 2015

UPDATE!



Who is CH2MHill Polar Services?



PRIME
CONTRACTOR

COMMUNICATIONS
TECHNOLOGY

SCIENCE SUPPORT &
FIELD OPERATIONS

BARROW



UICS Additionally Supports:



PRIME
CONTRACTOR

COMMUNICATIONS
TECHNOLOGY



SCIENCE SUPPORT &
FIELD OPERATIONS



BARROW



Community Observer Program

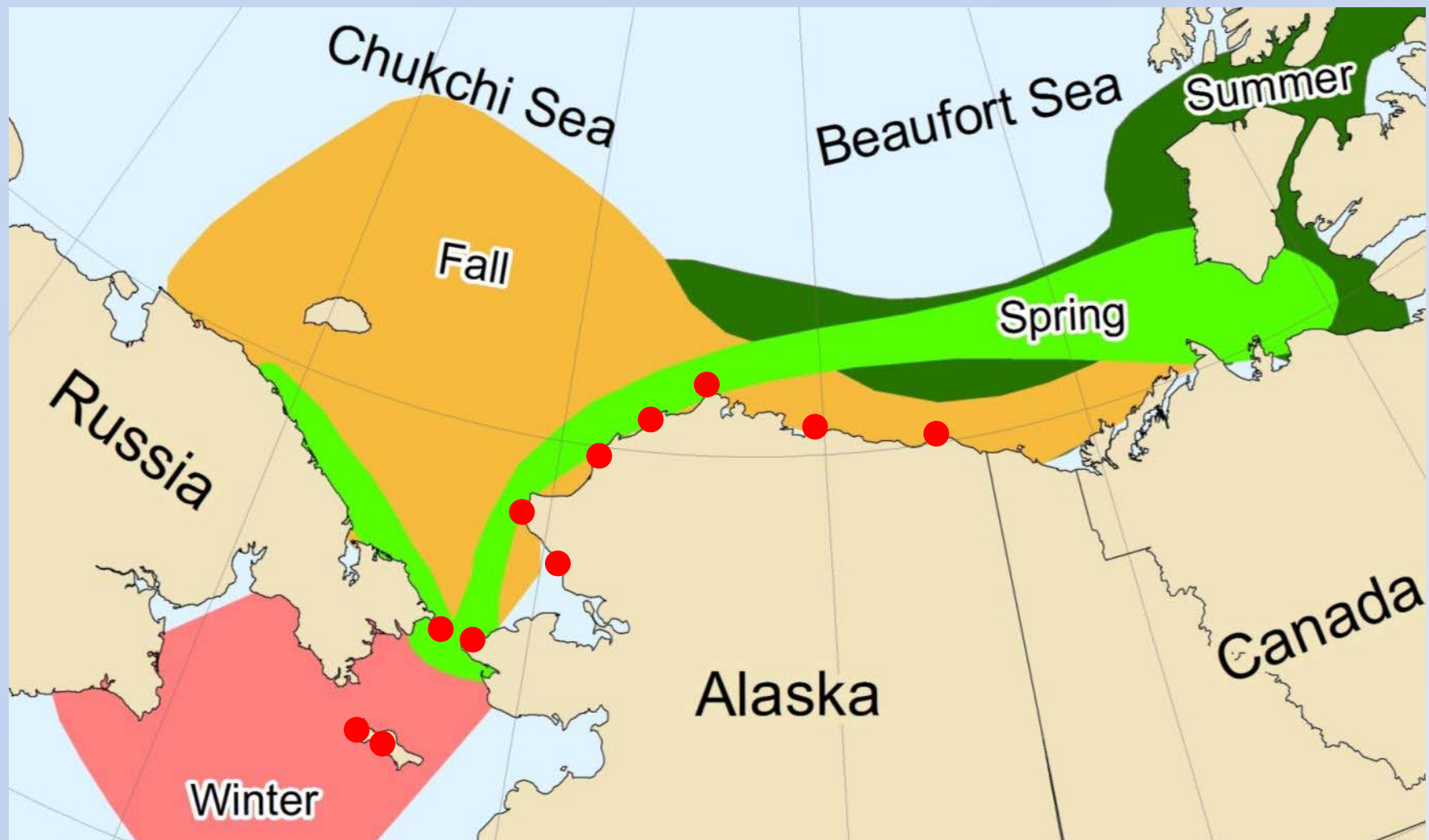
Core Duties

- Communicate with native communities to avoid potential conflict
- Heighten cultural awareness of researchers and crew
- Share science with native communities



AEWC and BWCA

- Subsistence whaling occurs in many North Slope villages, sanctioned by IWC
- UICS has relationship with AEWC and BWCA



Large Vessel Stopover Support

- 2 *HEALY* logistics stopovers in 2013; 1 *ODEN* stopover in 2014
- Personnel transfers via helicopter and landing craft
- Shoreside support including lodging, vehicles, cargo handling, scientific sample storage



2015 Activities Relevant to AICC

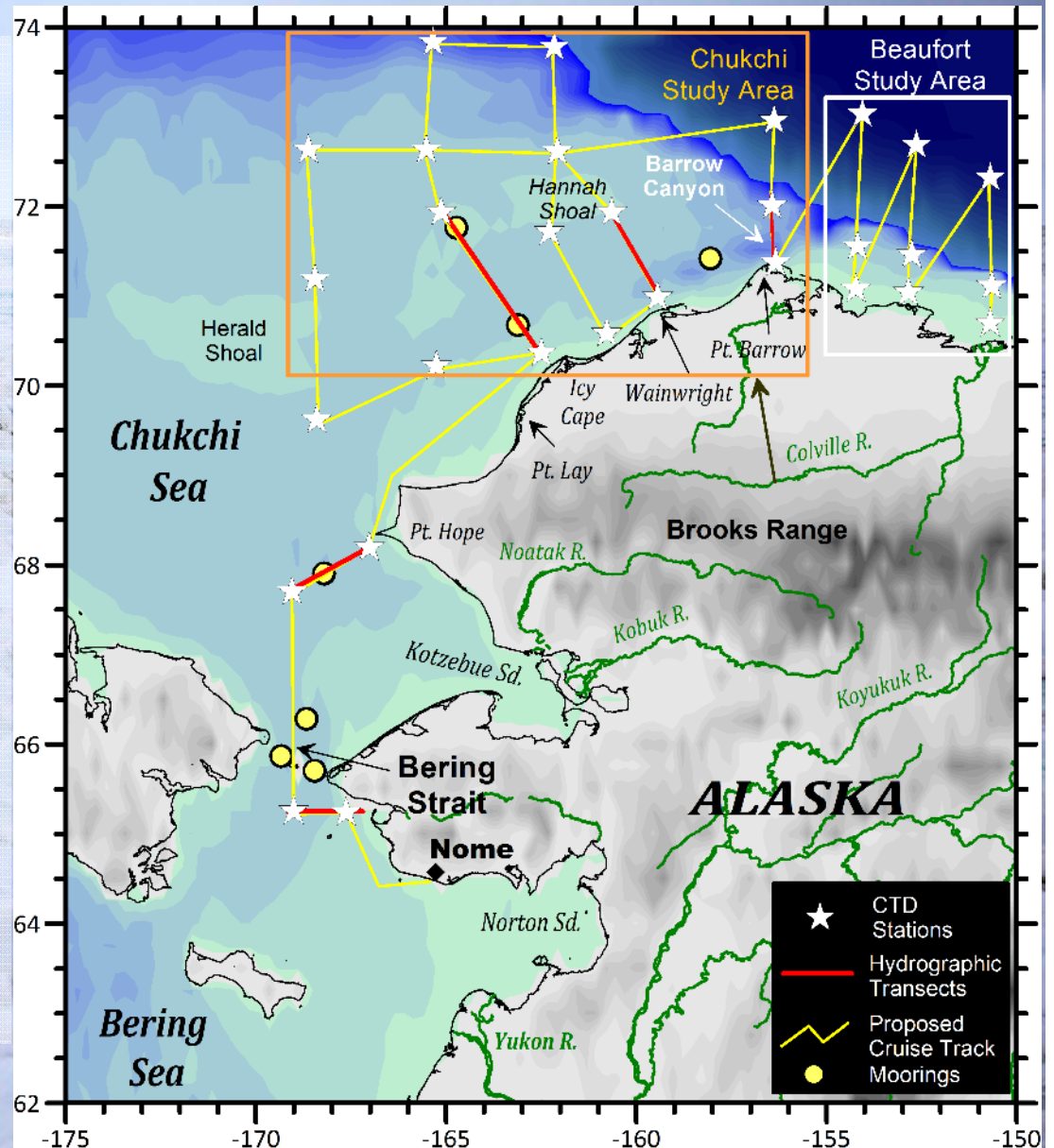
- No logistics stopovers for *HEALY* in Barrow
- CPS provided ground support for Grebmeier et al disembarking from *CCGC LAURIER*
- CPS provided subcontracting for field engineer from APL and equipment for Kadko GEOTRACES cruise
- No Community Observers in 2015
 - Considered for GEOTRACES, but deemed unnecessary

2016 Planned Activities

- No logistics stopovers for *HEALY* in Barrow
- Ground support for Grebmeier cruise disembarking from *CCGC LAURIER* (late July)
- Community Observer and ground support for Juranek/Sipler *SIKULIAQ* cruise (details following)

Juranek/Sipler—*SIKULIAQ*

- Aug 20 - Oct 2, 2016
- MOB/DEMOB out of Nome
- CPS will hire community observer via UICS
- UICS will assist with outreach to AEWC and BWCA
- Personnel swap on Sept 8, 2016 in Barrow. Small vessel to be provided by *SIKULIAQ*



A photograph of a sunset over a large body of water. The sun is a bright, glowing orb on the horizon, casting a long, shimmering reflection on the water's surface. The sky is a gradient of colors, from a pale blue at the top to a deep orange and red near the horizon. In the distance, a long bridge with many support pillars stretches across the horizon. The water in the foreground is a deep blue, with some darker patches of rock or sand visible.

Questions?

**Quyanaƙƙaƙ
(Thank You)**