

U.S. Arctic GEOTRACES

USCGC HEALY (HLY1502)

09 August, 2015 - 12 October, 2015

Dutch Harbor, Alaska - Dutch Harbor, Alaska

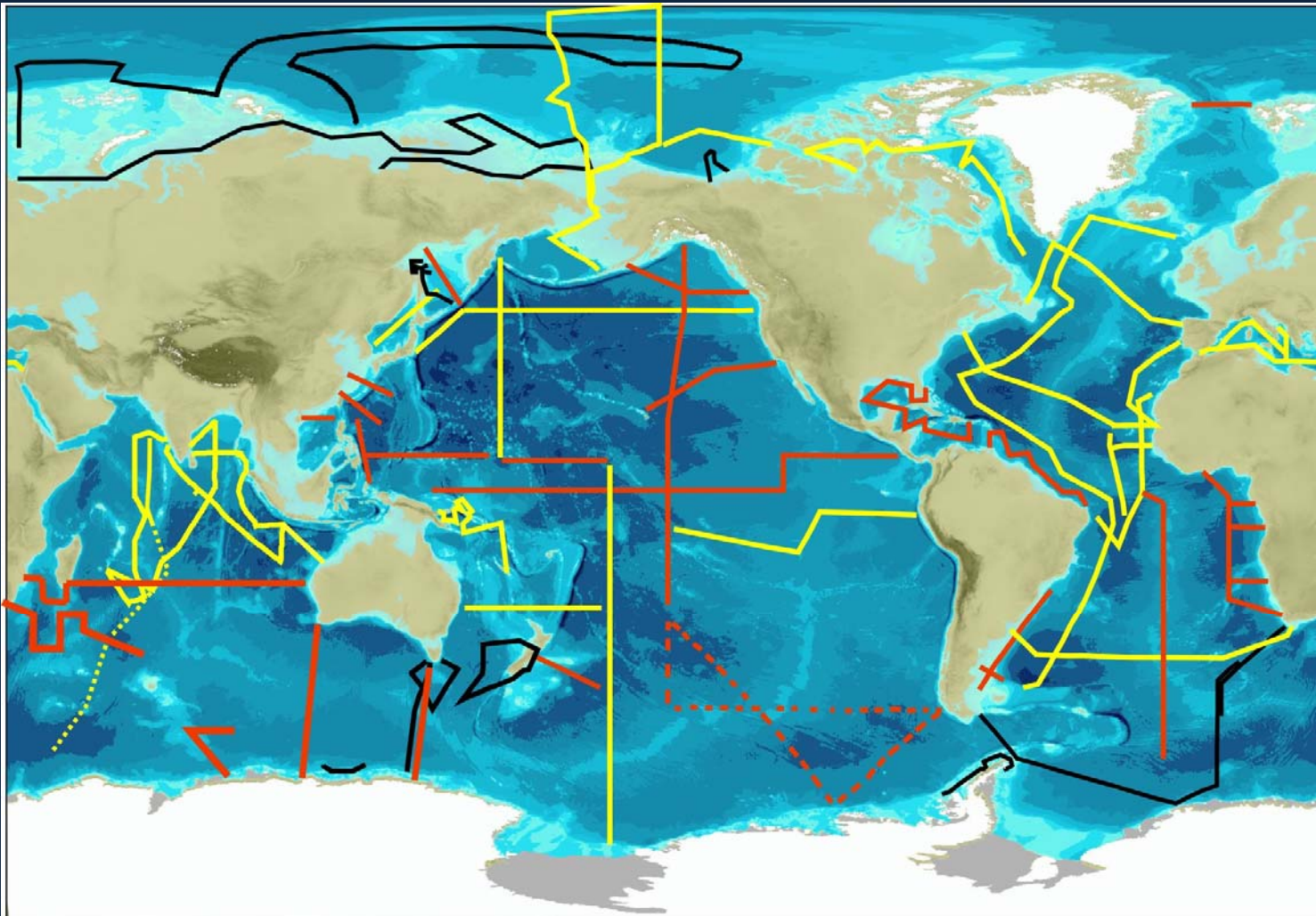
24 funded projects

Science party 51

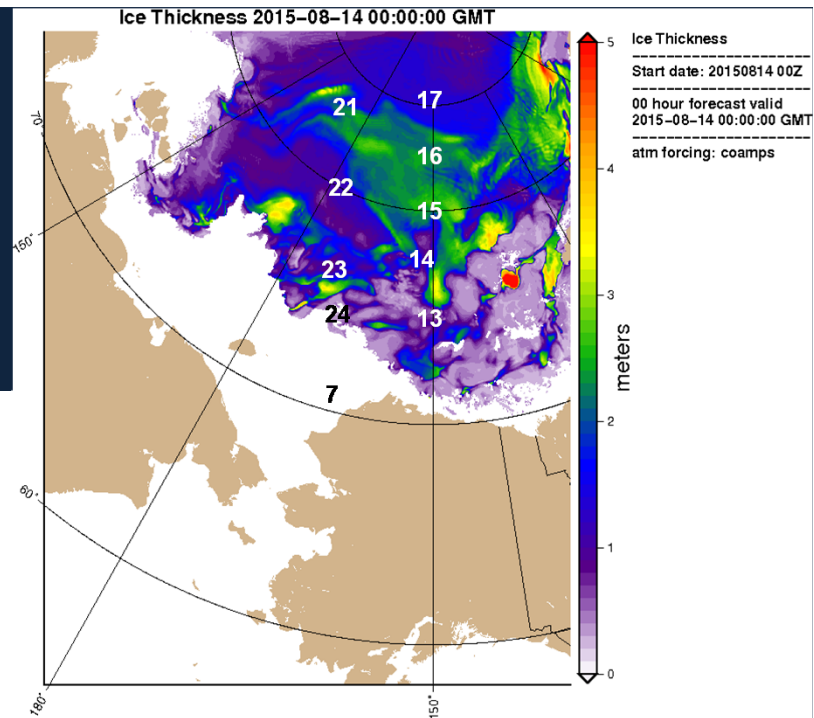


GEO TRACES

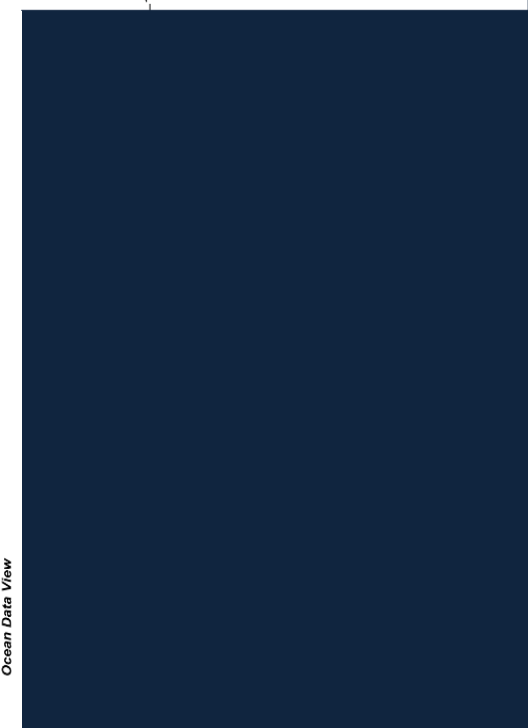
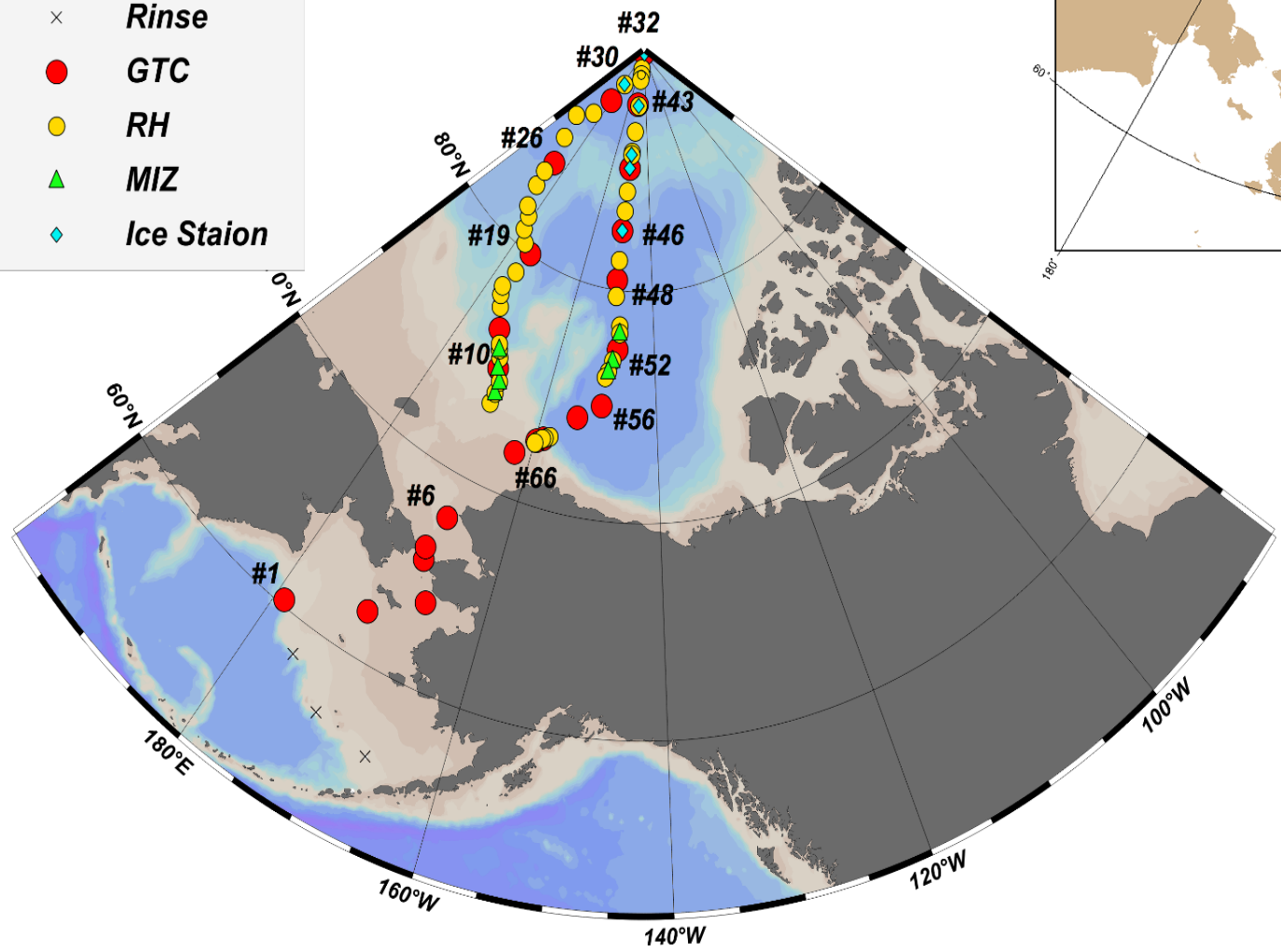
- International study of trace elements and their isotopes



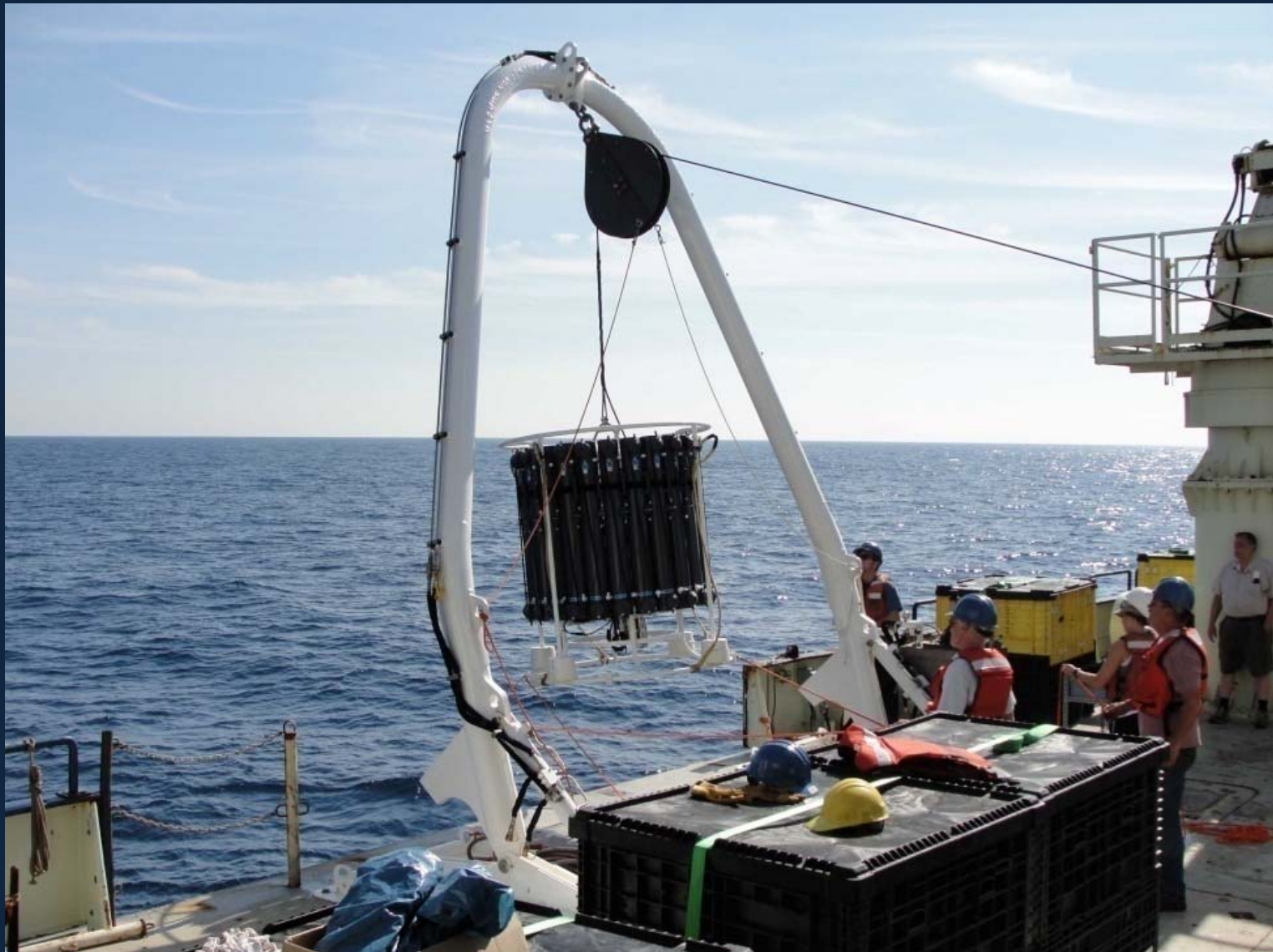
GEO TRACES



- × Rinse
- GTC
- RH
- ▲ MIZ
- ◆ Ice Staion







GEO TRACES



GEO TRACES



GEO TRACES



GEO TRACES



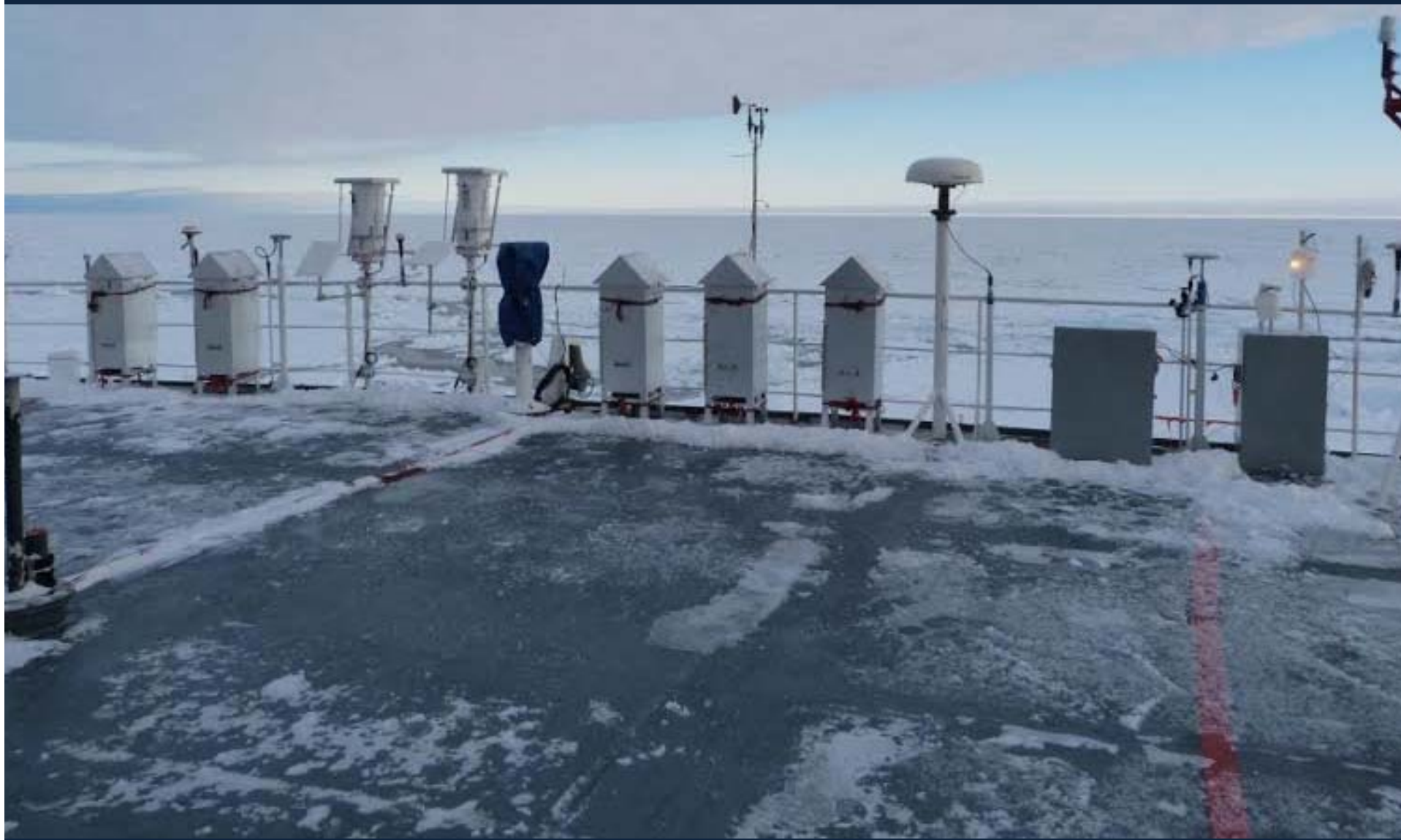
GEO TRACES



GEO TRACES



GEO TRACES



GEO TRACES



GEO TRACES



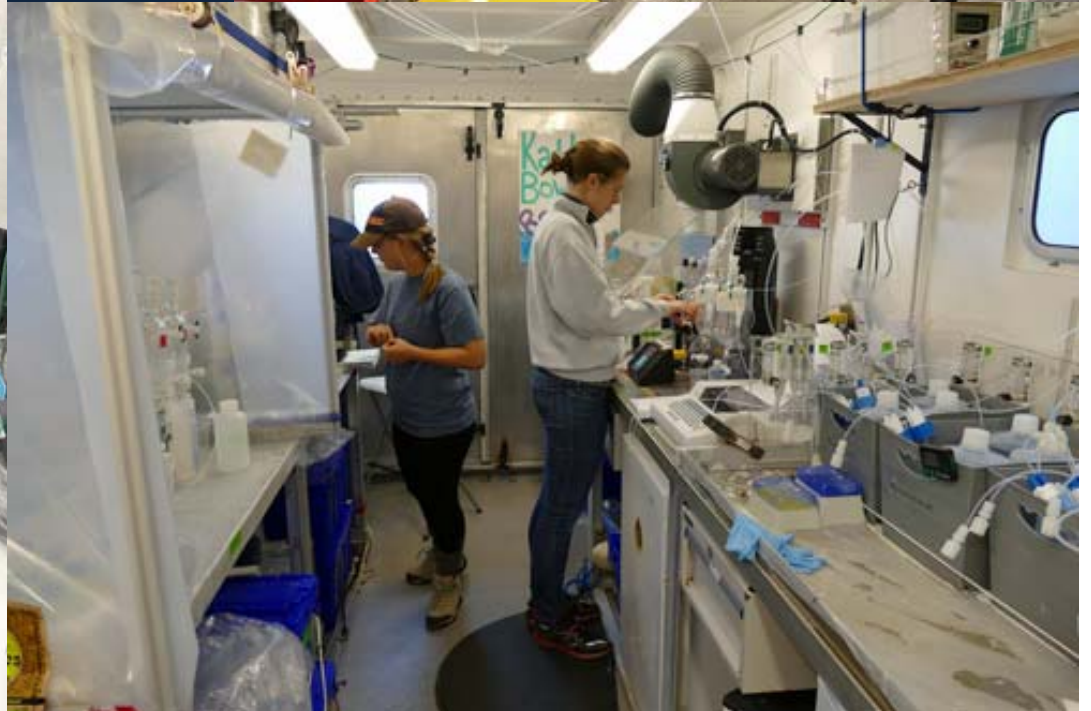
GEO TRACES



GEO TRACES



GEOTRACES





Float your boat

http://iabp.apl.washington.edu/FloatYourBoat/Float_Your_Boat_2015/FloatYourBoat.html



Deck bolts – aft staging and deck need replacing

Stern A frame ops – better from starboard A frame

Meal storage – general access fridge

Power supply aerosol samplers – communication

GEO TRACES

The logo for "GEO TRACES" is positioned in the top-left corner of a dark blue background. The text "GEO TRACES" is rendered in a light blue, sans-serif font. A red ECG (heart rate) line is superimposed over the text, starting from the left edge of the "G", passing through the center of the "O" (which is a globe), and extending to the right edge of the "S".