

## R/V HUGH R SHARP in a Nut Shell – 2024

- Great ship in a small package (146').
- Regional Class w/ Azimuth drives, DP.
- Univ of DE has operated ARF ship for decades.

### Challenges:

- All licensed engineers left workforce over a 10 month period = critical staffing shortage.
- Shortage and use of Temp Engineers led to maintenance and repair issues = Crewing and Maintenance Stand Down.
- Variable utilization year to year = rely on non-NSF and ONR missions to fill schedule.
- Seeking UD and State support for Mid-Life Funding.

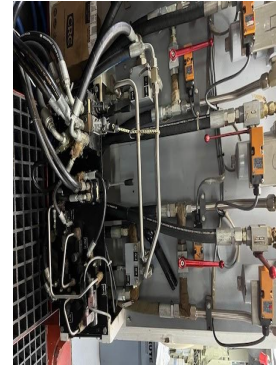


# Upgrades and Mid-Life Jump Start

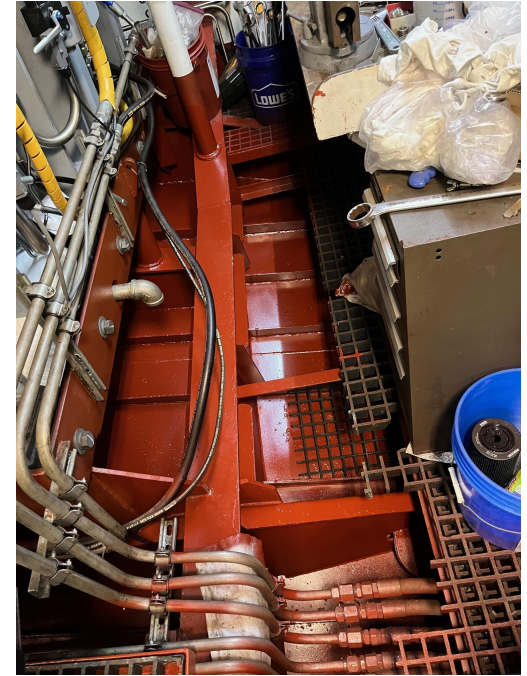


New main crane (NSF SSSE)

## Main Winch Controls Overhaul



New multibeam  
EM2040P (NSF)  
Mounts in Keel Pod



Bilge Preservation in  
Machinery and  
Winch Spaces

