

Rolling Deck to Repository (R2R)

2021 Update

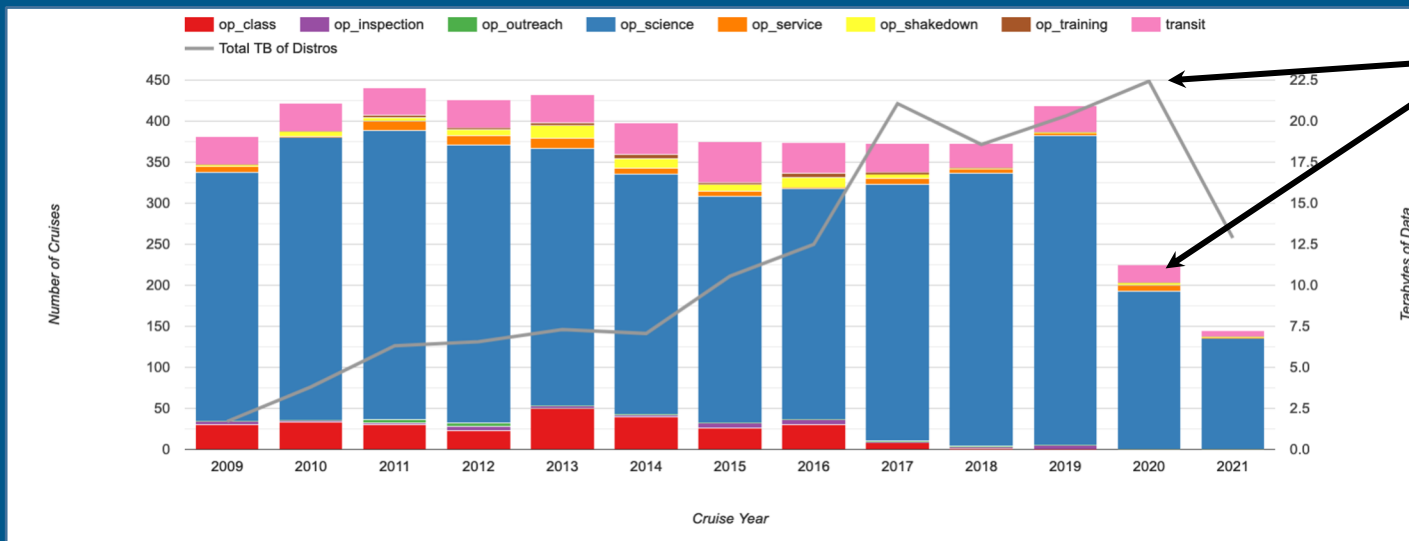
S. Carbotte, S. O'Hara, D. Clark, R. Hudak, E. Miller, C. Olson, N. Shane, S. Smith, K. Stocks, L. Stolp, R. Uribe
LDEO, FSU, SIO, WHOI

 COLUMBIA CLIMATE SCHOOL
LAMONT-DOHERTY EARTH OBSERVATORY



 SCRIPPS INSTITUTION OF
OCEANOGRAPHY

Cruises & Data Volumes at R2R

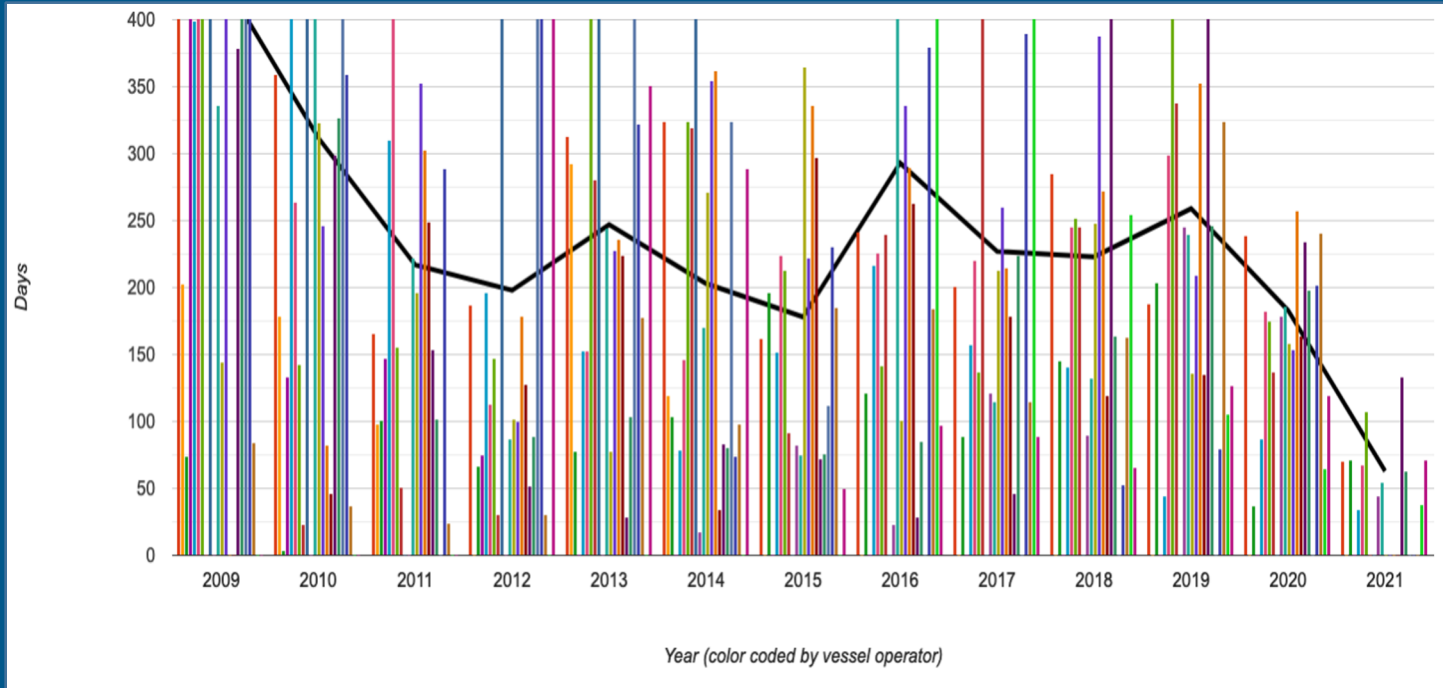


Annual volume of data continued to increase though number of cruises dropped due to COVID-19 pandemic.

Cruises are identified as science expeditions unless identified otherwise by the operator.

Time to delivery of cruise distros from operators

Improving average (~6 months) for delivering cruise data.



Black line = average # days after cruise end.

Colored lines show average # days by operator.

2020/2021 Developments: USAP Ships

Contact Us | @R2RDATA

OPP funding for management of USAP ships *Palmer* and *Gould* via R2R going forward

- Includes funds for migration of older cruises from the MGDS.

R2R fileset breakout, registration and publication complete for expeditions going back to 2010/2011 for Palmer/Gould.

Full suite of underway device filesets on cruise distros now managed (~ doubles USAP ship collection archived).

Processing for older cruises (back to 1992/1998 for Palmer/Gould) will continue in coming year.

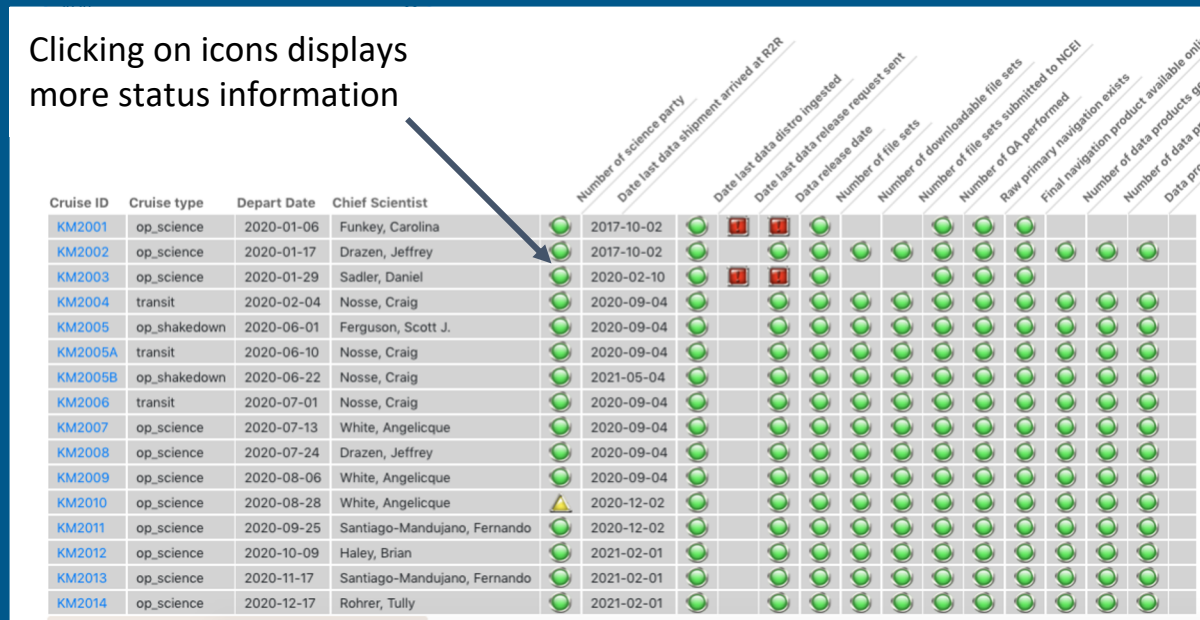
The screenshot shows the R2R website interface. At the top left is the R2R logo with the tagline 'ROLLING DECK TO REPOSITORY'. To the right are links for 'Contact Us' and '@R2RDATA'. Below the logo is a search bar containing 'USAP'. To the right of the search bar is a 'Home / Search Cruises' breadcrumb. Below the search bar are buttons for 'Search by Spatial Bounds' and 'Draw on Map', with a 'Edit Geometry' link. Further down are 'GO' and 'Clear' buttons. Below these are two tabs: 'Vessels' and 'Data Sets'. Under the 'Vessels' tab, there are two cards. The first card is for 'Laurence M. Gould' and features a photograph of a red icebreaker ship in a snowy environment. The second card is for 'Nathaniel B. Palmer' and features a photograph of a red icebreaker ship. Both cards have a 'Select Cruise ID' dropdown menu at the bottom.

New R2R Vessel Operator Dashboard

Review the status of all cruises for a vessel by year.

Colored lamps allow quick evaluation of status and help identify consistent problems.

Clicking on icons displays more status information



Cruise ID	Cruise type	Depart Date	Chief Scientist	Number of science party	Date last data shipment arrived at R2R	Date last data diastro ingested	Date last data release request sent	Data release date	Number of file sets	Number of downloadable file sets	Number of file sets submitted to NCEI	Raw primary navigation exists	Final navigation product exists	Number of data products available on R2R	Data products available on R2R
KM2001	op_science	2020-01-06	Funkey, Carolina	🟢	🔴	🔴	🟢		🟢	🟢	🟢	🟢	🟢	🟢	🟢
KM2002	op_science	2020-01-17	Drazen, Jeffrey	🟢	🟢	🟢	🟢	🟢	🟢	🟢	🟢	🟢	🟢	🟢	🟢
KM2003	op_science	2020-01-29	Sadler, Daniel	🟢	🔴	🔴	🟢		🟢	🟢	🟢	🟢	🟢	🟢	🟢
KM2004	transit	2020-02-04	Nosse, Craig	🟢	🟢	🟢	🟢	🟢	🟢	🟢	🟢	🟢	🟢	🟢	🟢
KM2005	op_shakedown	2020-06-01	Ferguson, Scott J.	🟢	🟢	🟢	🟢	🟢	🟢	🟢	🟢	🟢	🟢	🟢	🟢
KM2005A	transit	2020-06-10	Nosse, Craig	🟢	🟢	🟢	🟢	🟢	🟢	🟢	🟢	🟢	🟢	🟢	🟢
KM2005B	op_shakedown	2020-06-22	Nosse, Craig	🟢	🟢	🟢	🟢	🟢	🟢	🟢	🟢	🟢	🟢	🟢	🟢
KM2006	transit	2020-07-01	Nosse, Craig	🟢	🟢	🟢	🟢	🟢	🟢	🟢	🟢	🟢	🟢	🟢	🟢
KM2007	op_science	2020-07-13	White, Angelicque	🟢	🟢	🟢	🟢	🟢	🟢	🟢	🟢	🟢	🟢	🟢	🟢
KM2008	op_science	2020-07-24	Drazen, Jeffrey	🟢	🟢	🟢	🟢	🟢	🟢	🟢	🟢	🟢	🟢	🟢	🟢
KM2009	op_science	2020-08-06	White, Angelicque	🟢	🟢	🟢	🟢	🟢	🟢	🟢	🟢	🟢	🟢	🟢	🟢
KM2010	op_science	2020-08-28	White, Angelicque	🟡	🟢	🟢	🟢	🟢	🟢	🟢	🟢	🟢	🟢	🟢	🟢
KM2011	op_science	2020-09-25	Santiago-Mandujano, Fernando	🟢	🟢	🟢	🟢	🟢	🟢	🟢	🟢	🟢	🟢	🟢	🟢
KM2012	op_science	2020-10-09	Haley, Brian	🟢	🟢	🟢	🟢	🟢	🟢	🟢	🟢	🟢	🟢	🟢	🟢
KM2013	op_science	2020-11-17	Santiago-Mandujano, Fernando	🟢	🟢	🟢	🟢	🟢	🟢	🟢	🟢	🟢	🟢	🟢	🟢
KM2014	op_science	2020-12-17	Rohrer, Tully	🟢	🟢	🟢	🟢	🟢	🟢	🟢	🟢	🟢	🟢	🟢	🟢

Go to https://www.rvdata.us/operator_dash or access from the 'For Ship Operators' section in the community pulldown menu at <https://www.rvdata.us/>

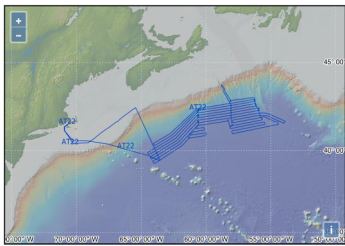


Atlantis

Home / Search / Atlantis / AT22

Operator: Woods Hole Oceanographic Institution

Cruise DOI: 10.7284/500482



CRUISE ID	SUMMARY	START DATE	START PORT	END DATE	END PORT
AT22	Project: Scotian Shelf Survey Chief: Armstrong, Andrew	2012-08-15	Woods Hole, Massachusetts	2012-09-10	Boston, Massachusetts

PROCESSED PRODUCTS	DATA TYPE	DEVICE TYPE(S)	PRODUCER	FORMAT	DATA

[Download product data](#)
[Download sample manifests](#)
[Download metadata files for all campaigns](#)
[Download metadata files for data quality L2](#)
[Download unprocessable accession items](#)
[Download unprocessable manifests](#)

Rating Dataset	Cruise	Vessel	Does S. Flag	Does A. Flag	Does B. Flag	Does C. Flag	Does D. Flag	Does E. Flag	Does F. Flag	Does G. Flag	Does H. Flag	Does I. Flag	Does J. Flag	Does K. Flag	Does L. Flag	Does M. Flag	Does N. Flag	Does O. Flag	Does P. Flag	Does Q. Flag	Does R. Flag	Does S. Flag	Does T. Flag	Does U. Flag	Does V. Flag	Does W. Flag	Does X. Flag	Does Y. Flag	Does Z. Flag	
INS	Kongsberg Seapath 2304	SR2001	Sally Ride	Does S. Flag	Does A. Flag	Does B. Flag	Does C. Flag	Does D. Flag	Does E. Flag	Does F. Flag	Does G. Flag	Does H. Flag	Does I. Flag	Does J. Flag	Does K. Flag	Does L. Flag	Does M. Flag	Does N. Flag	Does O. Flag	Does P. Flag	Does Q. Flag	Does R. Flag	Does S. Flag	Does T. Flag	Does U. Flag	Does V. Flag	Does W. Flag	Does X. Flag	Does Y. Flag	Does Z. Flag
INS	Kongsberg Seapath 2304	SR2002	Sally Ride	Does S. Flag	Does A. Flag	Does B. Flag	Does C. Flag	Does D. Flag	Does E. Flag	Does F. Flag	Does G. Flag	Does H. Flag	Does I. Flag	Does J. Flag	Does K. Flag	Does L. Flag	Does M. Flag	Does N. Flag	Does O. Flag	Does P. Flag	Does Q. Flag	Does R. Flag	Does S. Flag	Does T. Flag	Does U. Flag	Does V. Flag	Does W. Flag	Does X. Flag	Does Y. Flag	Does Z. Flag
INS	Kongsberg Seapath 2304	SR2003	Sally Ride	Does S. Flag	Does A. Flag	Does B. Flag	Does C. Flag	Does D. Flag	Does E. Flag	Does F. Flag	Does G. Flag	Does H. Flag	Does I. Flag	Does J. Flag	Does K. Flag	Does L. Flag	Does M. Flag	Does N. Flag	Does O. Flag	Does P. Flag	Does Q. Flag	Does R. Flag	Does S. Flag	Does T. Flag	Does U. Flag	Does V. Flag	Does W. Flag	Does X. Flag	Does Y. Flag	Does Z. Flag
INS	Kongsberg Seapath 2304	SR2004	Sally Ride	Does S. Flag	Does A. Flag	Does B. Flag	Does C. Flag	Does D. Flag	Does E. Flag	Does F. Flag	Does G. Flag	Does H. Flag	Does I. Flag	Does J. Flag	Does K. Flag	Does L. Flag	Does M. Flag	Does N. Flag	Does O. Flag	Does P. Flag	Does Q. Flag	Does R. Flag	Does S. Flag	Does T. Flag	Does U. Flag	Does V. Flag	Does W. Flag	Does X. Flag	Does Y. Flag	Does Z. Flag
INS	Kongsberg Seapath 2304	SR2005	Sally Ride	Does S. Flag	Does A. Flag	Does B. Flag	Does C. Flag	Does D. Flag	Does E. Flag	Does F. Flag	Does G. Flag	Does H. Flag	Does I. Flag	Does J. Flag	Does K. Flag	Does L. Flag	Does M. Flag	Does N. Flag	Does O. Flag	Does P. Flag	Does Q. Flag	Does R. Flag	Does S. Flag	Does T. Flag	Does U. Flag	Does V. Flag	Does W. Flag	Does X. Flag	Does Y. Flag	Does Z. Flag
INS	Kongsberg Seapath 2304	SR2006	Sally Ride	Does S. Flag	Does A. Flag	Does B. Flag	Does C. Flag	Does D. Flag	Does E. Flag	Does F. Flag	Does G. Flag	Does H. Flag	Does I. Flag	Does J. Flag	Does K. Flag	Does L. Flag	Does M. Flag	Does N. Flag	Does O. Flag	Does P. Flag	Does Q. Flag	Does R. Flag	Does S. Flag	Does T. Flag	Does U. Flag	Does V. Flag	Does W. Flag	Does X. Flag	Does Y. Flag	Does Z. Flag
INS	Kongsberg Seapath 2304	SR2007	Sally Ride	Does S. Flag	Does A. Flag	Does B. Flag	Does C. Flag	Does D. Flag	Does E. Flag	Does F. Flag	Does G. Flag	Does H. Flag	Does I. Flag	Does J. Flag	Does K. Flag	Does L. Flag	Does M. Flag	Does N. Flag	Does O. Flag	Does P. Flag	Does Q. Flag	Does R. Flag	Does S. Flag	Does T. Flag	Does U. Flag	Does V. Flag	Does W. Flag	Does X. Flag	Does Y. Flag	Does Z. Flag
INS	Kongsberg Seapath 2304	SR2008	Sally Ride	Does S. Flag	Does A. Flag	Does B. Flag	Does C. Flag	Does D. Flag	Does E. Flag	Does F. Flag	Does G. Flag	Does H. Flag	Does I. Flag	Does J. Flag	Does K. Flag	Does L. Flag	Does M. Flag	Does N. Flag	Does O. Flag	Does P. Flag	Does Q. Flag	Does R. Flag	Does S. Flag	Does T. Flag	Does U. Flag	Does V. Flag	Does W. Flag	Does X. Flag	Does Y. Flag	Does Z. Flag
INS	Kongsberg Seapath 2304	SR2009	Sally Ride	Does S. Flag	Does A. Flag	Does B. Flag	Does C. Flag	Does D. Flag	Does E. Flag	Does F. Flag	Does G. Flag	Does H. Flag	Does I. Flag	Does J. Flag	Does K. Flag	Does L. Flag	Does M. Flag	Does N. Flag	Does O. Flag	Does P. Flag	Does Q. Flag	Does R. Flag	Does S. Flag	Does T. Flag	Does U. Flag	Does V. Flag	Does W. Flag	Does X. Flag	Does Y. Flag	Does Z. Flag
INS	Kongsberg Seapath 2304	SR2010	Sally Ride	Does S. Flag	Does A. Flag	Does B. Flag	Does C. Flag	Does D. Flag	Does E. Flag	Does F. Flag	Does G. Flag	Does H. Flag	Does I. Flag	Does J. Flag	Does K. Flag	Does L. Flag	Does M. Flag	Does N. Flag	Does O. Flag	Does P. Flag	Does Q. Flag	Does R. Flag	Does S. Flag	Does T. Flag	Does U. Flag	Does V. Flag	Does W. Flag	Does X. Flag	Does Y. Flag	Does Z. Flag
INS	Kongsberg Seapath 2304	SR2011	Sally Ride	Does S. Flag	Does A. Flag	Does B. Flag	Does C. Flag	Does D. Flag	Does E. Flag	Does F. Flag	Does G. Flag	Does H. Flag	Does I. Flag	Does J. Flag	Does K. Flag	Does L. Flag	Does M. Flag	Does N. Flag	Does O. Flag	Does P. Flag	Does Q. Flag	Does R. Flag	Does S. Flag	Does T. Flag	Does U. Flag	Does V. Flag	Does W. Flag	Does X. Flag	Does Y. Flag	Does Z. Flag

Near-real-time QA/C of Navigation

Proof of concept:

- R2R tests will be run every hour with quality flags and centroid data produced for every minute of data
- Near real time checks will be developed to run on existing CORIOLIX data services
- Code will be part of R2R public repository for navigation qa hosted on GitHub

Proof of concept was done in collaboration with R-DESC and production code is currently under development



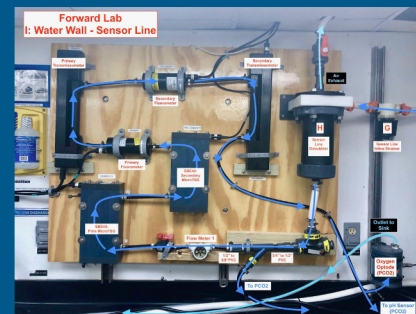
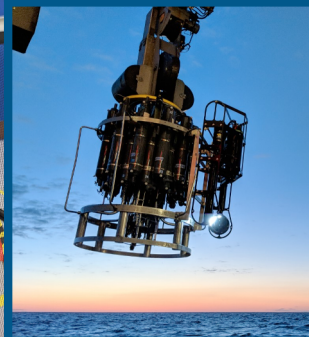
Development of Best Practice Documentation for Underway Devices

Collaborating with the RCRV team and IODE Ocean Best Practices System

- Focus is on best practices for technicians

Active Working Groups:

- EK-80 Fisheries Sonar Suite, led by Kristin Beem and **Rebecca Hudak**
 - Focus on calibrating an EK80, what features to run for best data
- General Flowthrough System, led by **Shawn Smith**
 - Focus on flowthrough system components (intakes, pipes, pumps, etc.), not connected instruments
- CTD Profiler, led by **Laura Stolp** and **Rebecca Hudak**
 - Organizing the 100s of documents from OBPS and other Institutes, working with oxygen BP group
- SBE-43 Oxygen Sensor, led by Gabe Matthias
- ADCP, led by Jules Hummon



System Security

- *Cybersecurity plan (Trusted CI)*
 - Information Asset Inventory (software, hardware, workflows, people)*
 - Enhanced Workflow Documentation*
- *Next generation R2R hardware and software*
 - Hardware consolidation, software upgrades*
- *Change in offsite deep archiving*
 - AWS to FSU-RCC same \$ but allows for egress without extra charge*

Looking Forward

- Improving cruise and data search functionality on web site
- Working with UNOLS to harvest cruise metadata from MFP
- Improve methods for more automated exchange device metadata
- Exploring near-real time data streams

[Join R2R team \(@LDEO\)](#)

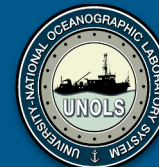
[Intermediate Systems Analyst \(https://opportunities.columbia.edu/en-us/job/517631/intermediate-systems-analyst](https://opportunities.columbia.edu/en-us/job/517631/intermediate-systems-analyst)

[Associate Research Scientist https://academic.careers.columbia.edu/#/83445](https://academic.careers.columbia.edu/#/83445)



Acknowledgements

Funded
by:



Providing access to and ensuring
the preservation of national
oceanographic research data.

