



2021 RVTEC Icebreakers

Who's Who in RVTEC

On deck: Emily Shimada, OSU

OSU Marine Tech Group

Andrew Woogen

Brandon D'Andrea

Emily Shimada

Michael Tepper-Rasmussen

Supported 12 cruises for *R/V Oceanus*

Various outreach and educational events

Supported cruises on *USCGC Healy* for STARC

Getting ready for *R/V Taani*

Retiring *R/V Oceanus*



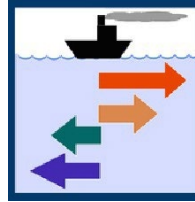
Oregon State
University

On Deck: Carmen Greto, UAF



Jules Hummon

The UHDAS Team



Raising the profile
of ADCP data!



Toby Martin



Joseph Gum



Drew Frambach



Eric Firing

On Deck: Denis Ilias, Miami

University of Miami / RSMAS

RV F.G. Walton Smith

Denis Ilias
Marine
Tech



Jocy Morejon
Campus & Marine Ops Office Mgr.



& Honorary
Campus
Team
Member
Zika

Don Cucchiara
Interim Marine Ops
Mgr



On Deck: Stian Alesandri, SOI

Schmidt Ocean Institute

RVTEC 2021



Falkor and Falkor (too) Marine Technicians

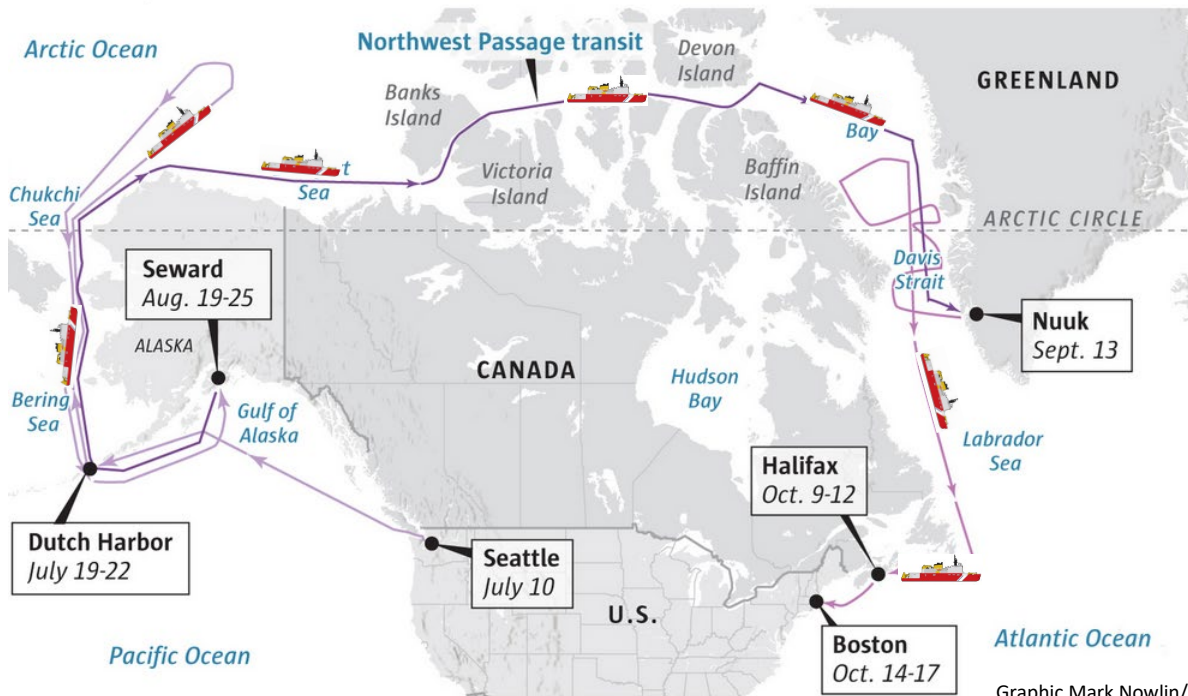


On Deck: Sarah Kaye, C4IT



USCGC Healy 2021

Polar Science Network: you want Internet where??



Graphic Mark Nowlin/Seattle Times

On Deck: Jesus Gaytan, LDEO

LAMONT DOHERTY EARTH OBSERVATORY
RV MARCUS G LANGSETH



Sean Higgins
OMO
Director



David Martinson
Chief Science
Officer



Alan Thompson
Instrument
Technician



Shaun Shaver
Chief Science
Officer



Todd Jensvold
Chief Science
Officer



Jesus Gaytan
Tech Services
Manager



Gilles Guerin
Instrument
Technician



Cody Bahlau
Instrument
Technician



Joshua Kasinger
Source/Deck
Technician



Brian Agee
Source/Deck
Technician

University of Hawaii Ocean Technology



Kilo Moana



Lance
Frymire



Julianna
Diehl



Jeff Koch

Trevor Young

Marine Technicians aboard the Kilo Moana pictured above.

ON DECK: Kevin Jerram, MAC

Multibeam Advisory Committee (MAC)



Paul Johnson¹



Vicki Ferrini^{2,1}



Kevin Jerram¹






Multibeam Advisory Committee

A community-based effort with the goal of ensuring consistent high-quality multibeam data are collected across the U.S. Academic Research Fleet

[About](#) [Help Desk](#) [Tech Reports](#) [Tech Resources](#) [Technical Teams](#) [Presentations](#)

[Contact Us](#)

Multibeam Sonar Systems

Ship Info	Sonar System Info	MAC Resources	Related Links
 Atlantis (WHOI)	Kongsberg EM122 (12 kHz, 150°, 1x1° beams)	MAC Technical Docs	Cruise Catalog R2R Quality Assessment
 Blue Heron (UMN)	Reson SeaBat S101 (240 kHz, 150°)	Coming Soon!	Cruise Catalog
 Healy (USCG)	Kongsberg EM122 (12 kHz, 150°)	MAC Technical Docs	Cruise Catalog R2R Quality Assessment
 Hugh R. Sharp (UDEL)	Reson SeaBat S101 (240 kHz, 150°) Reson SeaBat 7101 (240 kHz, 150°)	MAC Technical Docs	Cruise Catalog
 Kilo Moana	Kongsberg EM122 (12 kHz, 150°)	MAC Technical Docs	Cruise Catalog

mac-help@unols.org

¹ Center for Coastal & Ocean Mapping, University of New Hampshire

² Lamont-Doherty Earth Observatory, Columbia University

Supported under NSF Grants: 1933720, 1933776



COLUMBIA CLIMATE SCHOOL
LAMONT-DOHERTY EARTH OBSERVATORY

ON DECK: Loren Tuttle, UW

University of Washington R/V Thomas G Thompson and R/V Rachel Carson



Loren Tuttle, Supervisor - 2016

Stephen Jalickee - 2010

Jennifer Nomura - 2015

Sonia Brugger - 2018

Liz Ricci - 2018

Adam Stenseth - 2021

Ken Feldman - 2009

Mike Foy - 2014

ON DECK: Lynne Butler, URI

University of Rhode Island/Endeavor
Lynne Butler



ON DECK: Emily Cheung, WHOI

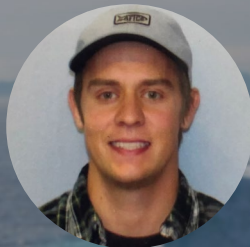
SSSG R/V Neil Armstrong & R/V Atlantis



David Fisichella



Sarah Fuller



Chris Lewis



Chris Griner



Robbie Laird



Catie Graver



Allison Heater



Amy Simoneau



Croy Carlin



Emily Cheung



Josh Eaton



Laura Stolp



Becca Hudak



Brian Guest

ON Deck: Lee Ellett, UCSD



Ship-Based Technical Support in the Arctic (STARC)



Brendon Mendenhall

EH&S Specialist

Gary Lain

Technical Groups

Research Technician Group (Restech)

STS-Computing Resources (STS-CR)

Development Operations (DevOps)

Oceanographic Data Facility (ODF)

Shipboard Electronics Group (SEG)

Shipboard Geophysical Group (SGG)

Ship Based Technical Support in the Arctic (STARC)

Shipboard Geophysical Group (SGG)



Kolby Pedrie

Doug Penny

SCRIPPS INSTITUTION OF OCEANOGRAPHY RESEARCH TECH GROUP



Charlie Brooks



Caitlyn Webster



Jeremiah Brower



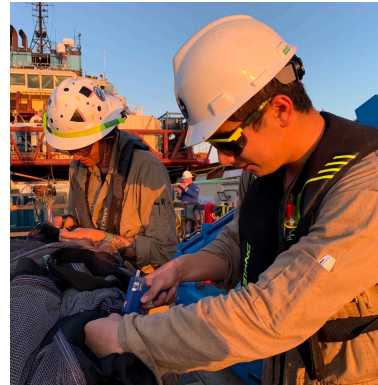
Matt Durham



Josh Manger



Andrew Naslund



Royhon Agostine

Mason Schettig

Keith Shadle

STS Computing Resources Group



Howell Johson



Michael Buxton



Nick Benz

Maxwell Hughes

Brent De Vries

Thomas Lockwood

Jon Meyer

Mary Huey

Kenneth Olsen

Mark Pumphrey

Oceanography Data Facility (ODF)



sts-sio-odf@ucsd.edu | odf.ucsd.edu

ODF is a specialized services group comprised of data analysts and chemistry technicians

At Sea

- Acquire and process high-resolution open ocean CTD data
- Water sample collection and high-accuracy chemical analysis for salinity, oxygen, and nutrients

On Shore

- Analyze nutrients, dissolved oxygen, salinity, and chlorophyll for PIs through the oceanography community
- Continued development of in-house CTD/Python software [ctdcal](#)



Todd Martz



Susan Becker



John Ballard



Megan Roadman



Tania Leung



John Calderwood



Mike Kovatch



Aaron Mau

