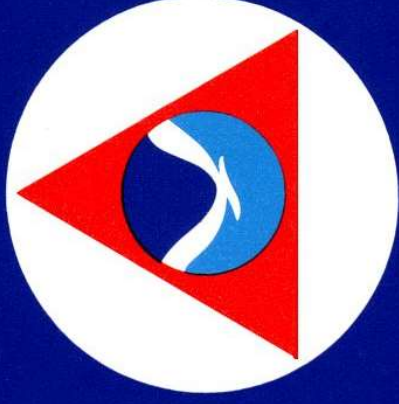


UNOLS Council Meeting

Spring 2021



LCDR Claire Surrey-Marsden, NOAA

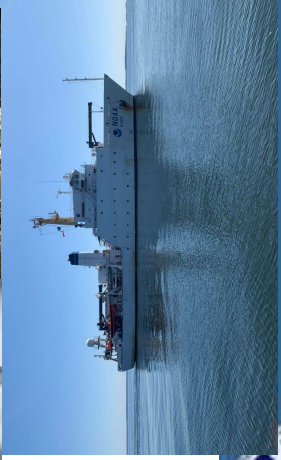
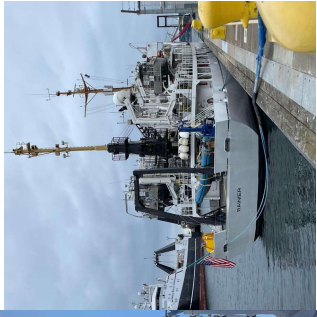
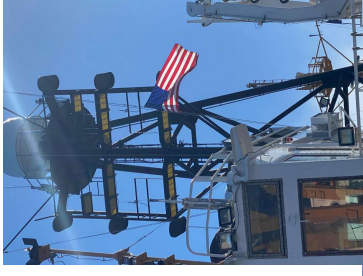
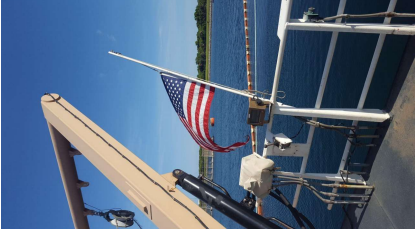
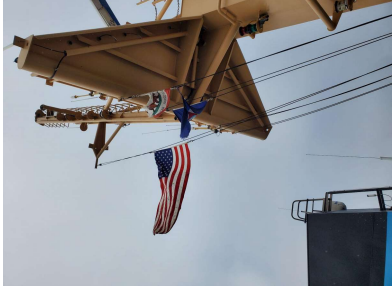
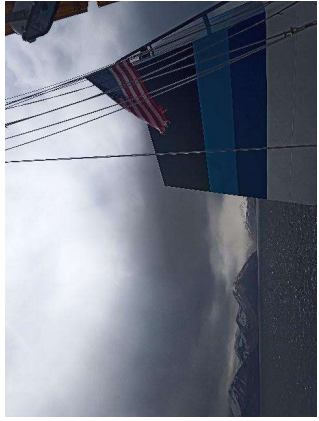
NOAA Office of Marine and Aviation Operations

Marine Advisor



Office of Marine and Aviation Operations

In Memoriam: RDML Rick Brennan



Office of Marine and Aviation Operations

NOAA – UNOLS Partnership continued

- Council, RVOC, FIC, and Ship Scheduling Meetings
- Schedule optimization between UNOLS operators and NOAA PI's
- UNOLS projects on NOAA ships
- Collaborative Buoy Operations
- MRP Planning and Lessons Learned
- COVID-19 Lessons Learned



FY21 Fleet Allocation Plan - 810DAS sailed as of date

Fleet Council Signed & Approved on 2021/02/26
 FY 2021 FLEET ALLOCATION PLAN
 FY2021 Execution Baseline FAP

MOI	DAIS/OD	FPD	OCT	NOV	DEC	JAN	FEB	MAR	APR	MAY	JUN	JUL	AUG	SEP
MOC PACIFIC														
OSCAR DYSON	160/227	0	TR SHI DOCKSIDE REPAIRS	OMAO										
FALMWEATHER	192/251	5	CL C SHEILTS S GEN	OMAO STRAIT O DOCKSIDE REPAIRS										
RAINIER	189/245	0	SH SE AK NOS DOCKSIDE REPAIRS											
BELL M. SHIMADA	161/190	7	SH T DOCKSIDE REPAIRS											
REUBEN LASKER	169/185	0	SH CALCOF NMFS DOCKSIDE											
OSCAR ELTON SETTE	155/169	0	SH DOCKSIDE REPAIRS											
MOC ATLANTIC														
RONALD H. BROWN	199/305	0	SH T WYAS OAR SHIP SH MOVE											
NANCY FOSTER	108/191	0	T ALO DRYDOCK PERIOD											
THOMAS JEFFERSON	184/194	17	BOEM/F S BOEM/ SHI D DOCKSIDE REPAIRS											
OREANOS EXPLORER	146/275	0	SHIP SH TRA DOCKSI OMAO DRYDOCK PERIOD											
OREGON II	159/160	0	SH SH SEAM NMFS SEAM NMFS											
PISCES	144/190	0	SHIP STAGING OMAO SHIP ST OMAO DOCKSIDE REPAIRS											
GORDON GUNTER	130/165	0	DOCKSIDE REPAIRS											
HENRY B. BIGELOW	174/181	19	OW GUL S SH TRAN DRYDOCK PERIOD											
FERDINAND R. HASSLER	155/233	0	SH T DRYDOCK PERIOD											
Fleet Totals	2425/3161	48												

FY22

- SIP & bubble protocols through Q1
- Blocked time for two Operation Readiness Trainings



NOAA Fleet COVID-19 Guidance

Vaccine status: Not mandatory but highly encouraged

- 15/15 ships have had access to both doses
- Personnel provide status via existing secure OMAO HIPAA approved medical system managed by the Office of Health Services (OHS). Supervisors and co-workers are not to request this information

Existing COVID-19 guidance

- Approved molecular (PCR) COVID-19 test on day 4-5 of SIP AND one Rapid Antigen Test on the same day of sailing (MPIC/MO administered), OR 2 PCR tests to be conducted on day 4-5
- Strict 7 Day SIP before sailing, off ship
- No ship beyond 500nm for the first 7 days of sailing
- No one living aboard until negative results received and 7 days of SIP completed
- Masks, social distancing, galley restrictions, confined space restrictions while aboard for 20 days minimum



Updated Underway “Relaxed” COVID-19 measures

Strict 7 Day SIP off ship continues along with the above testing requirements

If **100%** of all sailing members are vaccinated, Relaxed COVID-19 measures after 24 hours at sea no 7 day requirement to stay along the shore before heading out past 500nm

- 90% - 100% vaccinated, relaxed measures after 7 days at sea
- <90% vaccinated, relaxed measures after 14 days

Examples of relaxed measures:

- Masks optional
- Social distancing no longer required, caution advised in confined spaces
- Open Galley, gym, common areas

All ships shall have capacity to conduct COVID-19 testing of all embarked personnel while at sea/ Daily crew/personnel COVID-19 screening to continue



NOAA Class A - AGOR Variant

Mission: Support coastal, continental shelf, worldwide ocean survey & data collection

Principal Characteristics

- Length Overall: 244.50ft
- Draft: 15.27ft (Full-load, EOL)
- Displacement: 3,120 LT
- Sustained Speed: 12kts
- Complement: 44 + 4(surge)
- Endurance: 12,000 nm

Mission capabilities:


- Launch work boats & perform maintenance on buoys & moorings
- Collect weather & water column data & bathymetric surveys
- Enhanced seakeeping & bubble sweepdown characteristics
- Flexible diesel-electric power plant
- High maneuverability & station keeping
- Reconfigurable working deck areas





Oceanographer & Discoverer



Oceanographer	Discoverer
<p>Homeport – Honolulu, HI Keel Laying – Jan/Feb 2022 Delivery – January 2024 Fully Operational – January 2025</p> 	<p>Homeport – Newport, RI Keel Laying – June 2022 Delivery – June 2024 Fully Operation – May/Jul 2025</p> 