The banner features a satellite in the top left corner, a person's silhouette in the center, and a ship's structure on the right. The text 'HiSeasNet' is prominently displayed in white on the left side of the banner.

HiSeasNet

INTERNET FOR OCEANOGRAPHIC SHIPS AT SEA

HiSeasNet

18 MHz Prototype on IS-18 NH

Kevin Walsh

Scripps Institution of Oceanography

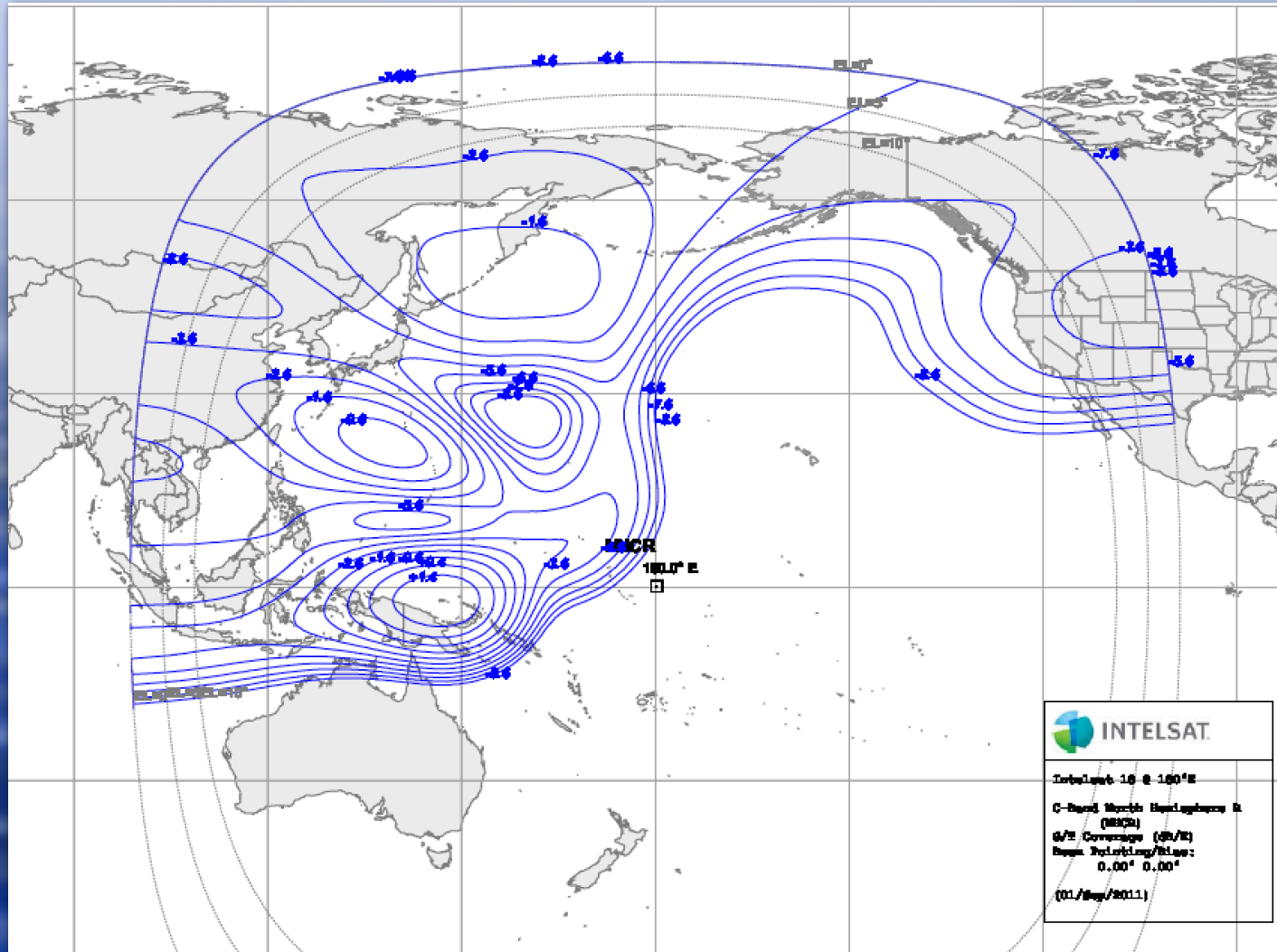
kwalsh@ucsd.edu

RVTEC 2017

18 MHz Prototype



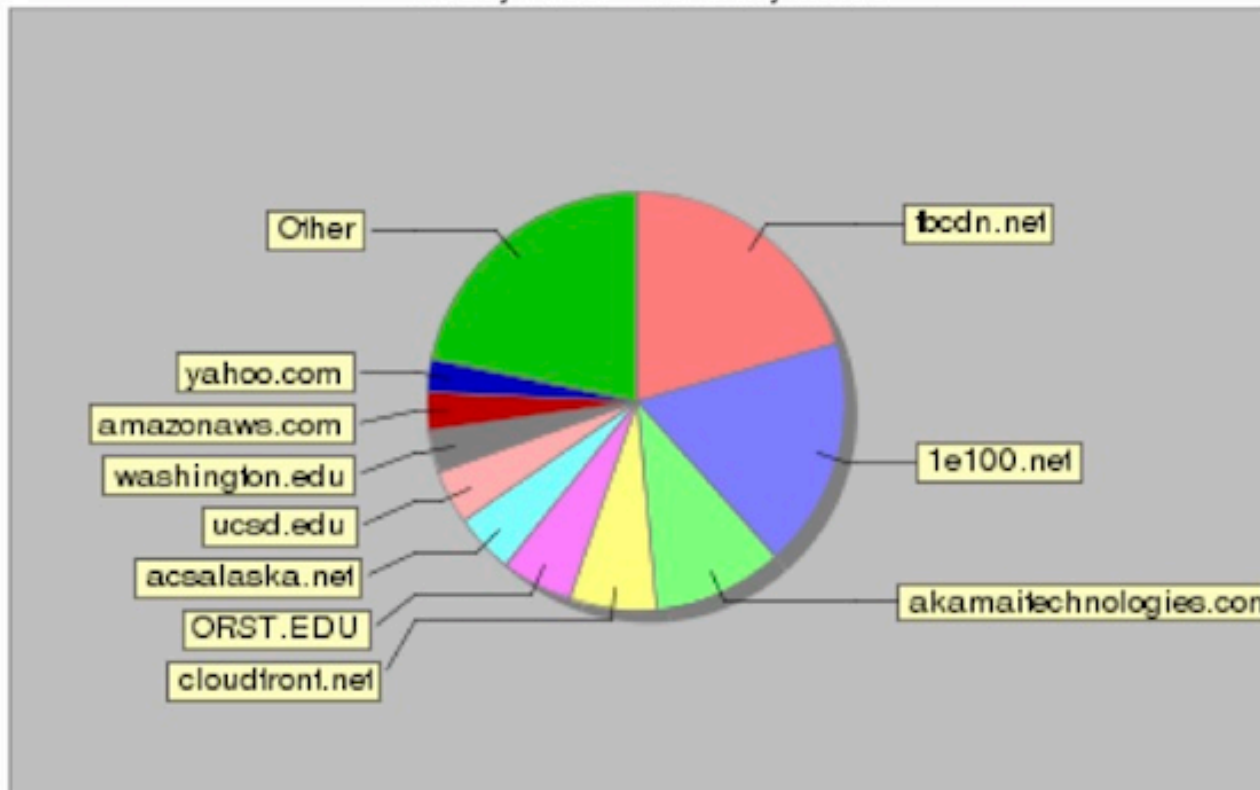
- ◆ 18 MHz on IS-18 North Hemi beam in North East Pacific
- ◆ RV Sally Ride, RV Sikuliaq, and RV Roger Revelle
- ◆ Multiple back-to-back Jason cruises on Revelle
- ◆ Several use cases to divide up the 18 MHz:
 - ◆ Shared 21.5 Mbit shore to ships with 1 Mbit to 1.5 Mbit ship to shore
 - ◆ 11.4 Mbit shore to ships with 10.5 Mbit ship to shore for Revelle and 1 Mbit ship to shore for Sally Ride and Sikuliaq
 - ◆ 11.4 Mbit shore to ships with 10.5 Mbit ship to shore for Sally Ride and 1 Mbit ship to shore for Revelle and Sikuliaq



IS-18 North Hemi C-Band

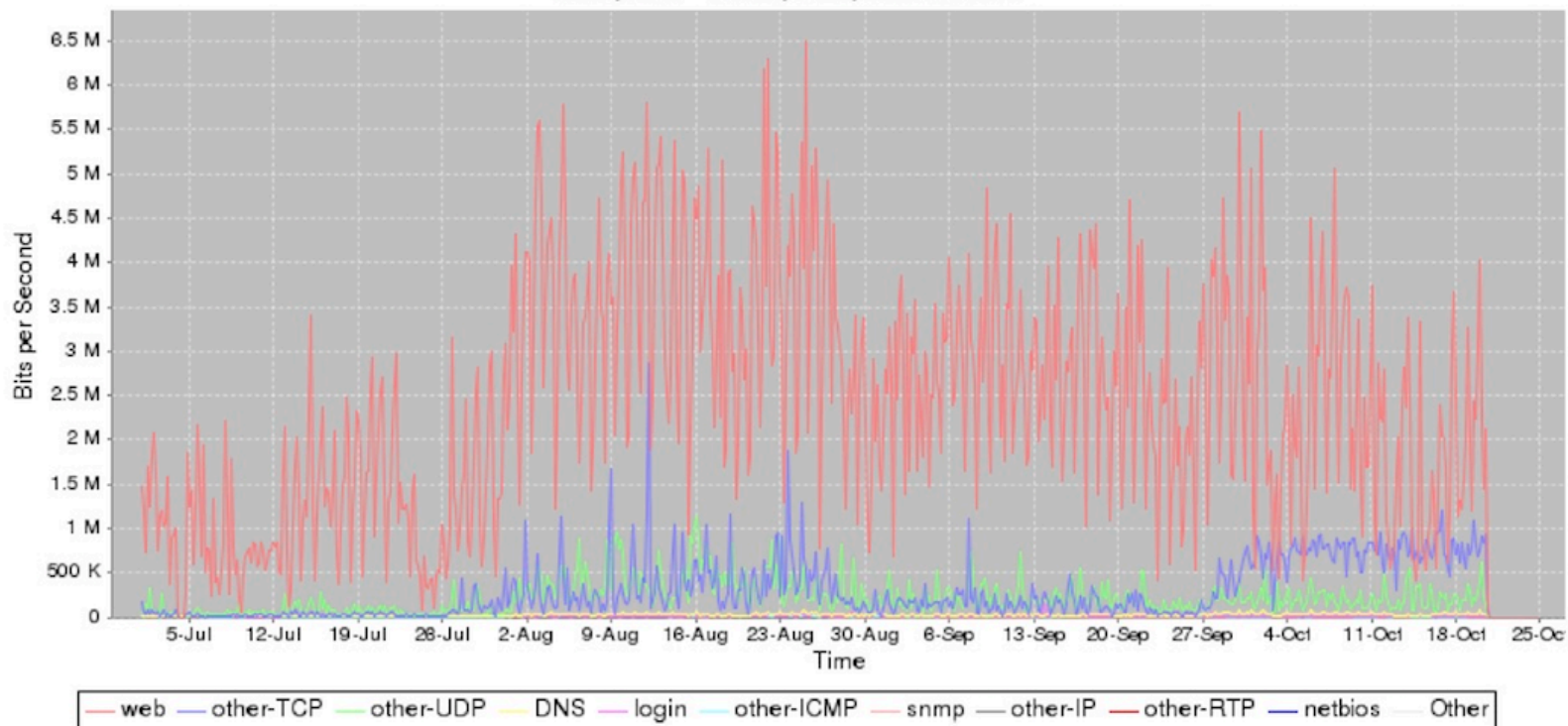
shore->ship Source Domains bit/s for expanded vessels

1 Jul, 00:00 - 25 Oct, 00:00



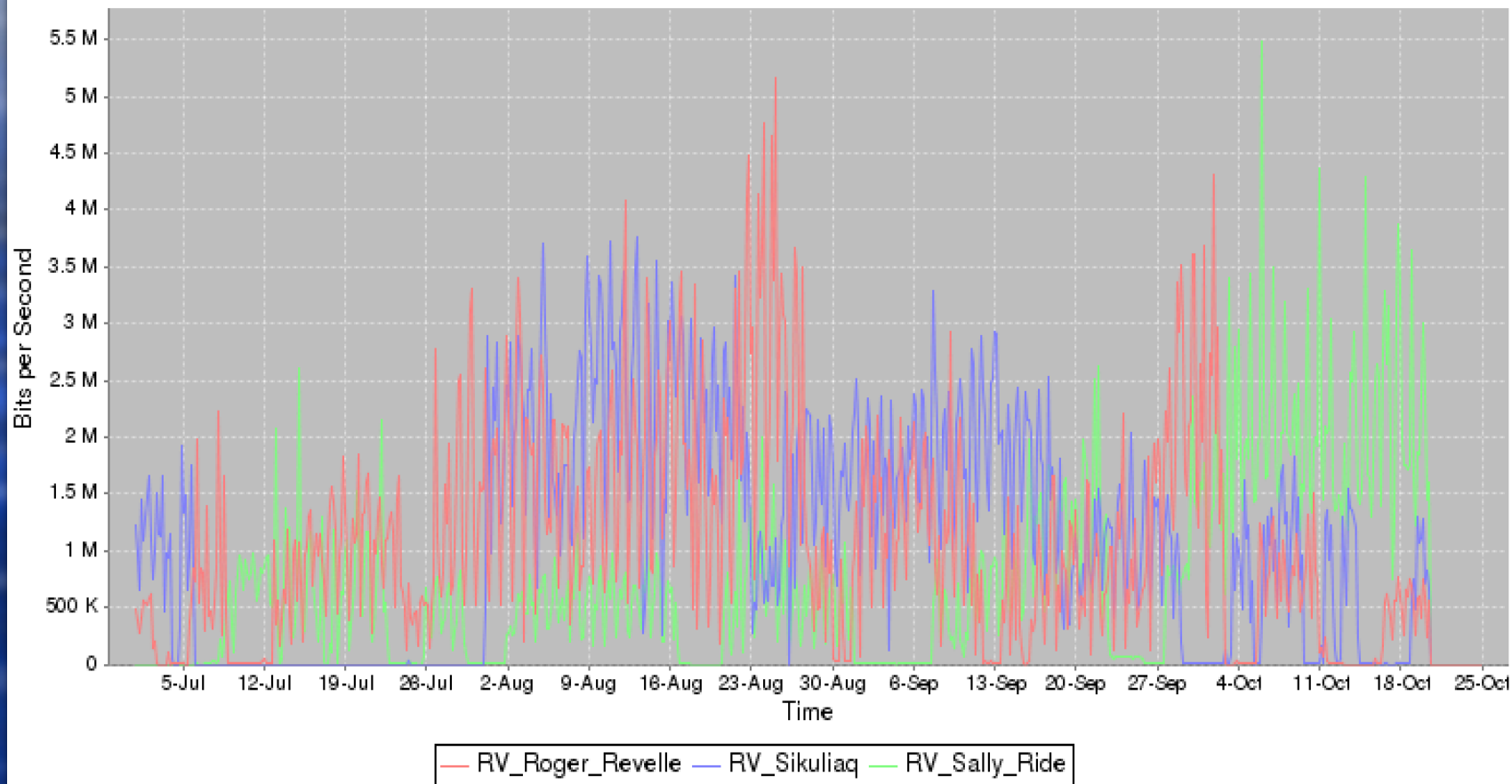
shore->ship Protocol Group bit/s for expanded vessels

1 Jul, 00:00 - 25 Oct, 00:00, interval=4 hr.



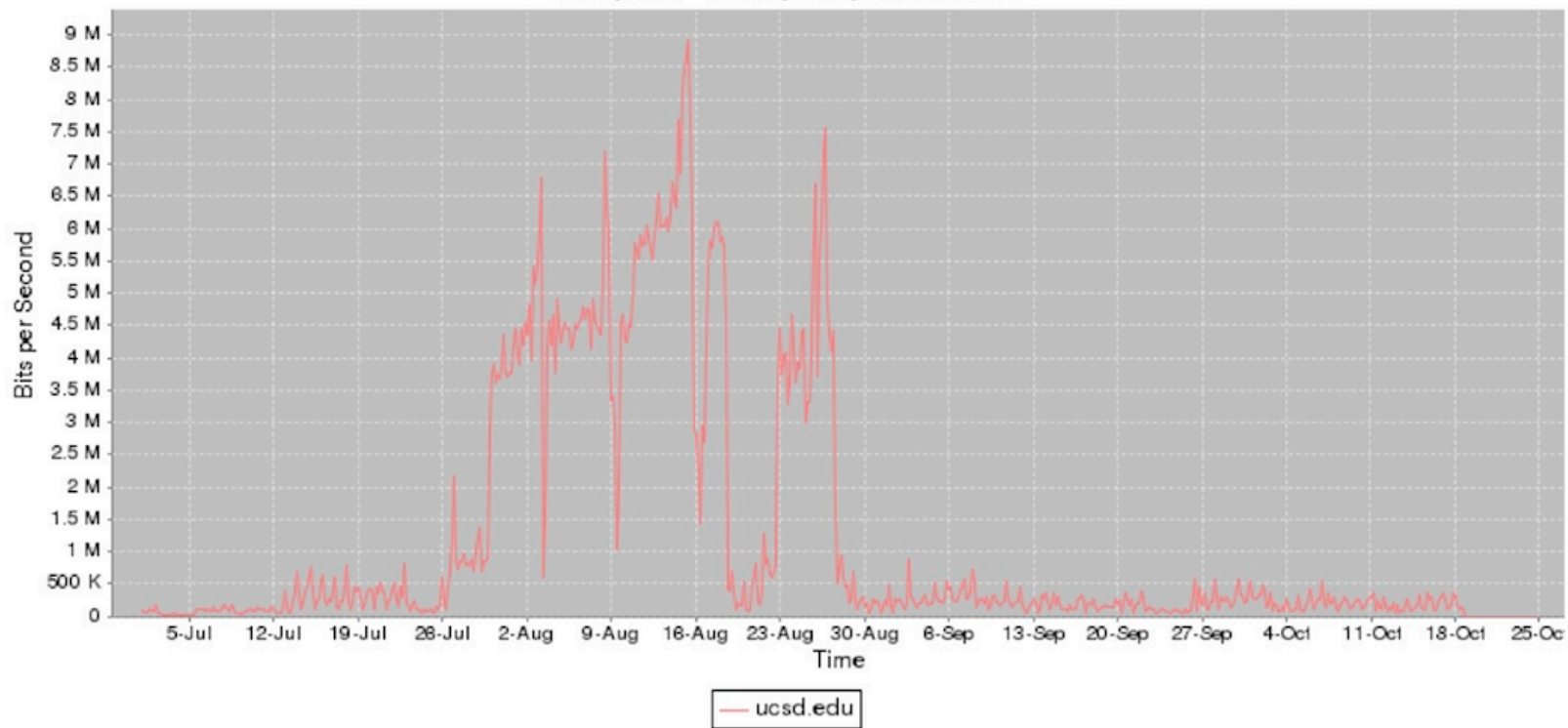
shore->ship bit/s for expanded vessels

1 Jul, 00:00 - 25 Oct, 00:00, interval=4 hr.



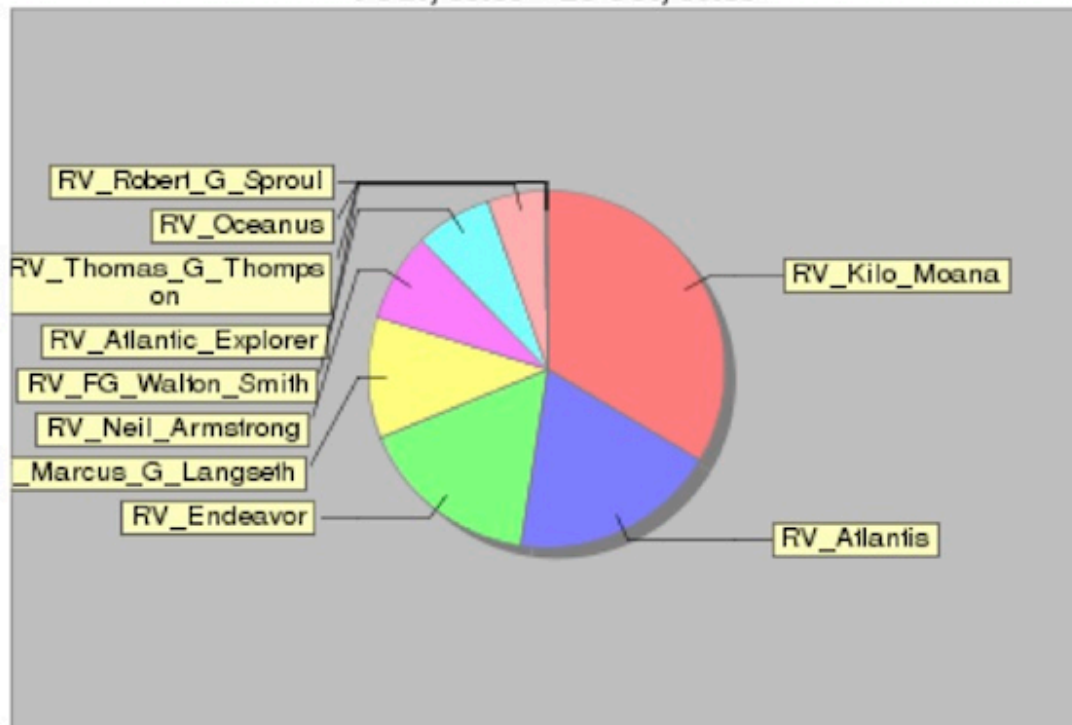
ship->shore Source Domains bit/s for expanded vessels

1 Jul, 00:00 - 25 Oct, 00:00, interval=4 hr.



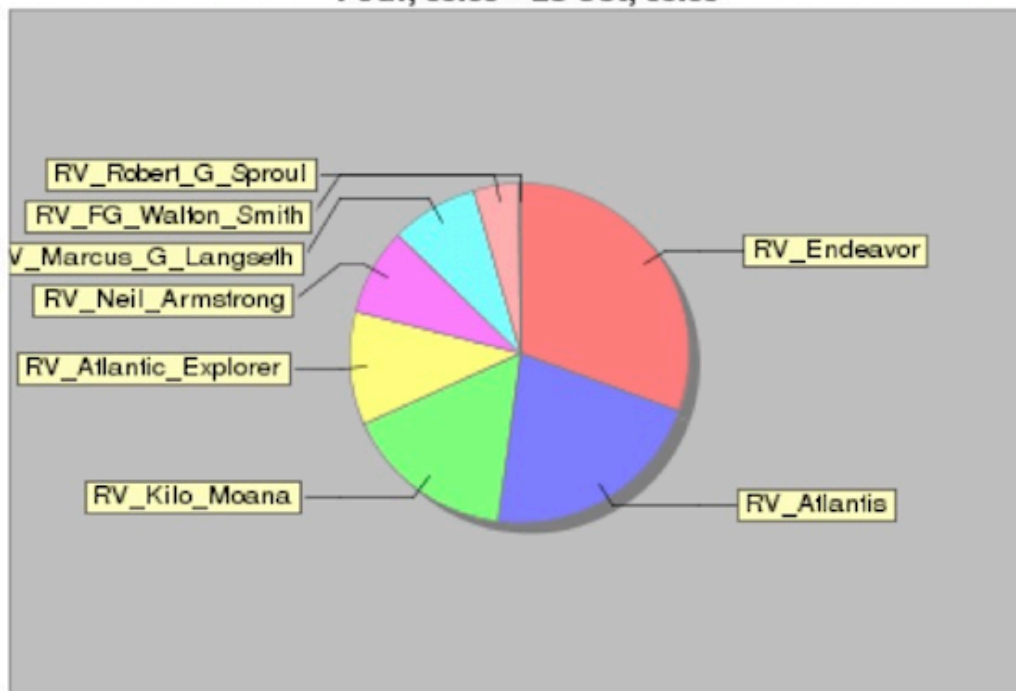
shore->ship bit/s for unexpanded vessels

1 Jul, 00:00 - 25 Oct, 00:00



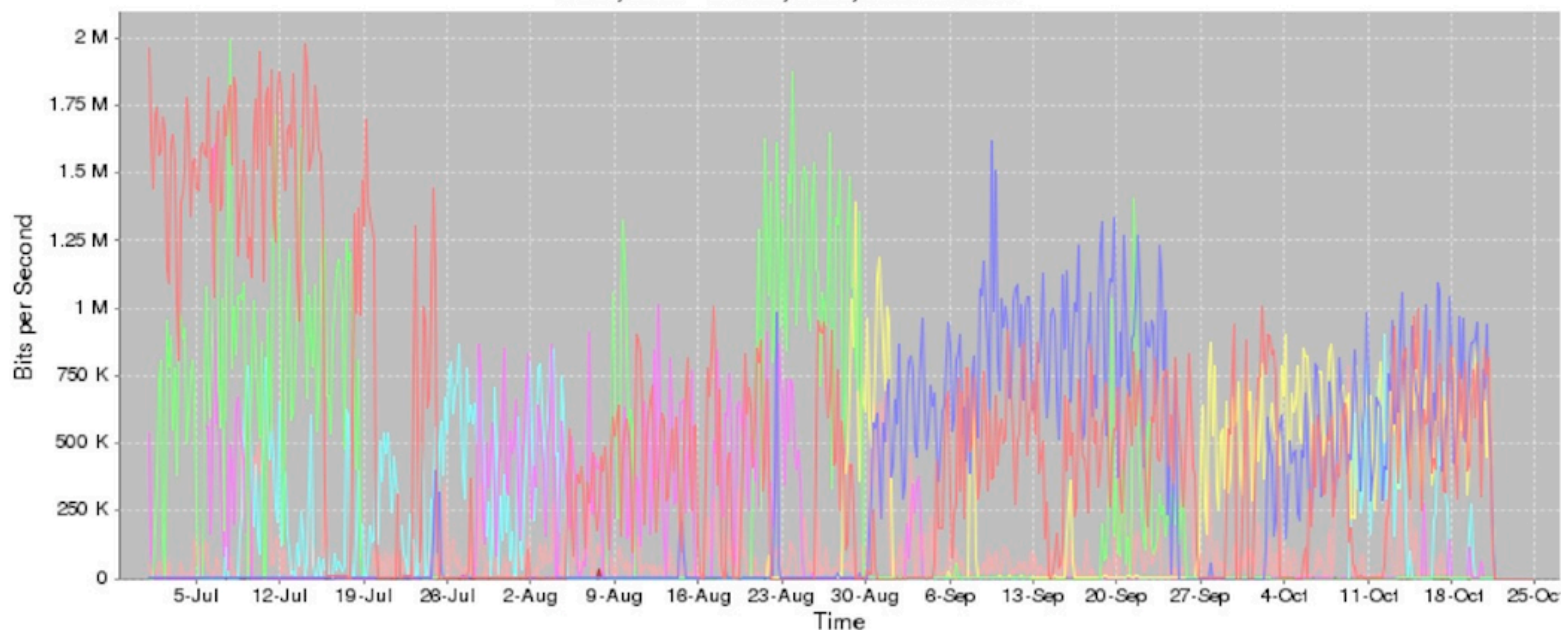
ship->shore bit/s for unexpanded vessels

1 Jul, 00:00 - 25 Oct, 00:00



shore->ship bit/s for unexpanded vessels

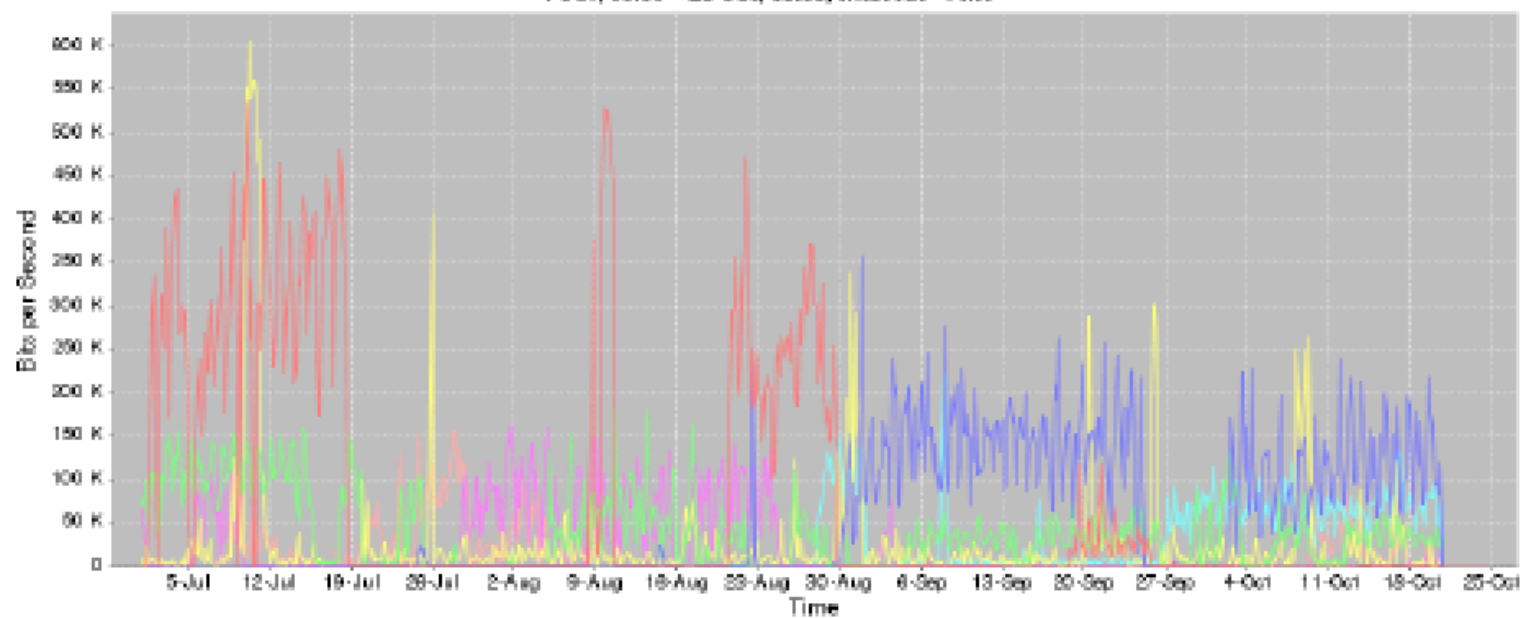
1 Jul, 00:00 - 25 Oct, 00:00, interval=4 hr.



RV_Kilo_Moana — RV_Atlantis — RV_Endeavor — RV_Marcus_G_Langseth — RV_Neil_Armstrong — RV_FG_Walton_Smith
 RV_Atlantic_Explorer — RV_Thomas_G_Thompson — RV_Oceanus — RV_Robert_G_Sproul

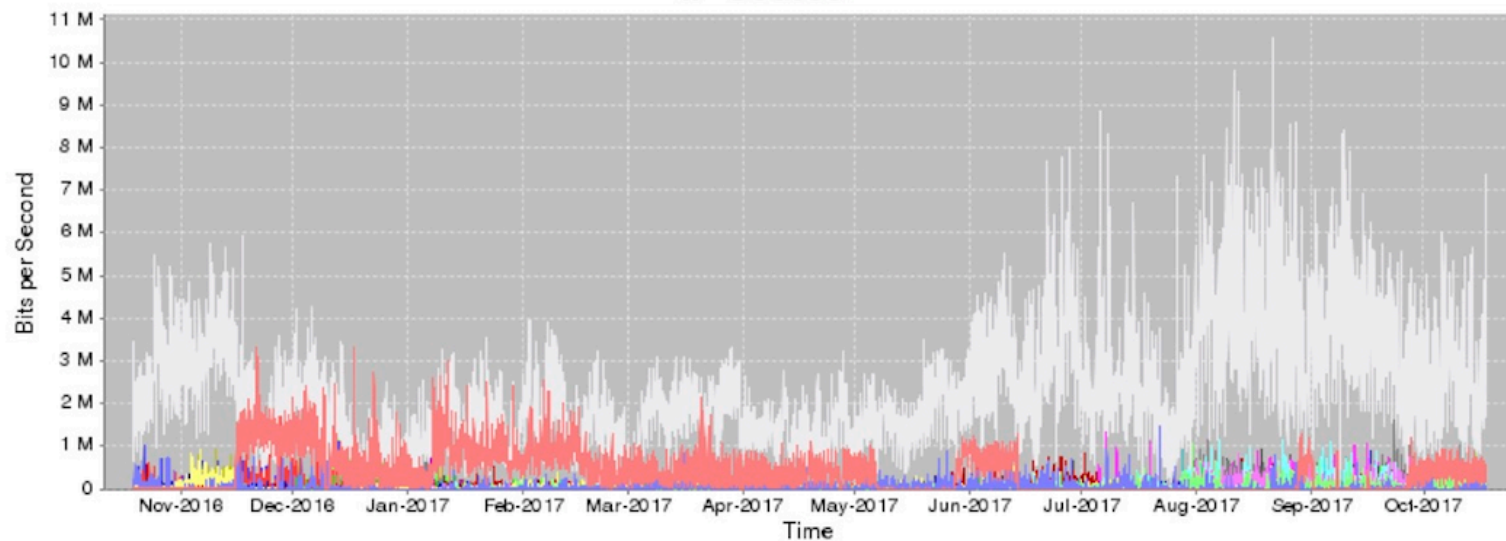
ship->shore bit/s for unexpanded vessels

1 Jul, 00:00 - 25 Oct, 00:00, interval=4 hr.



— RV_Endeavor
 — RV_Atlantis
 — RV_Kilo_Moana
 — RV_Atlantis_Explorer
 — RV_Neil_Armstrong
 — RV_Marcus_G_Langseth
— RV_FG_Wallace_Smith
 — RV_Robert_G_Sproul

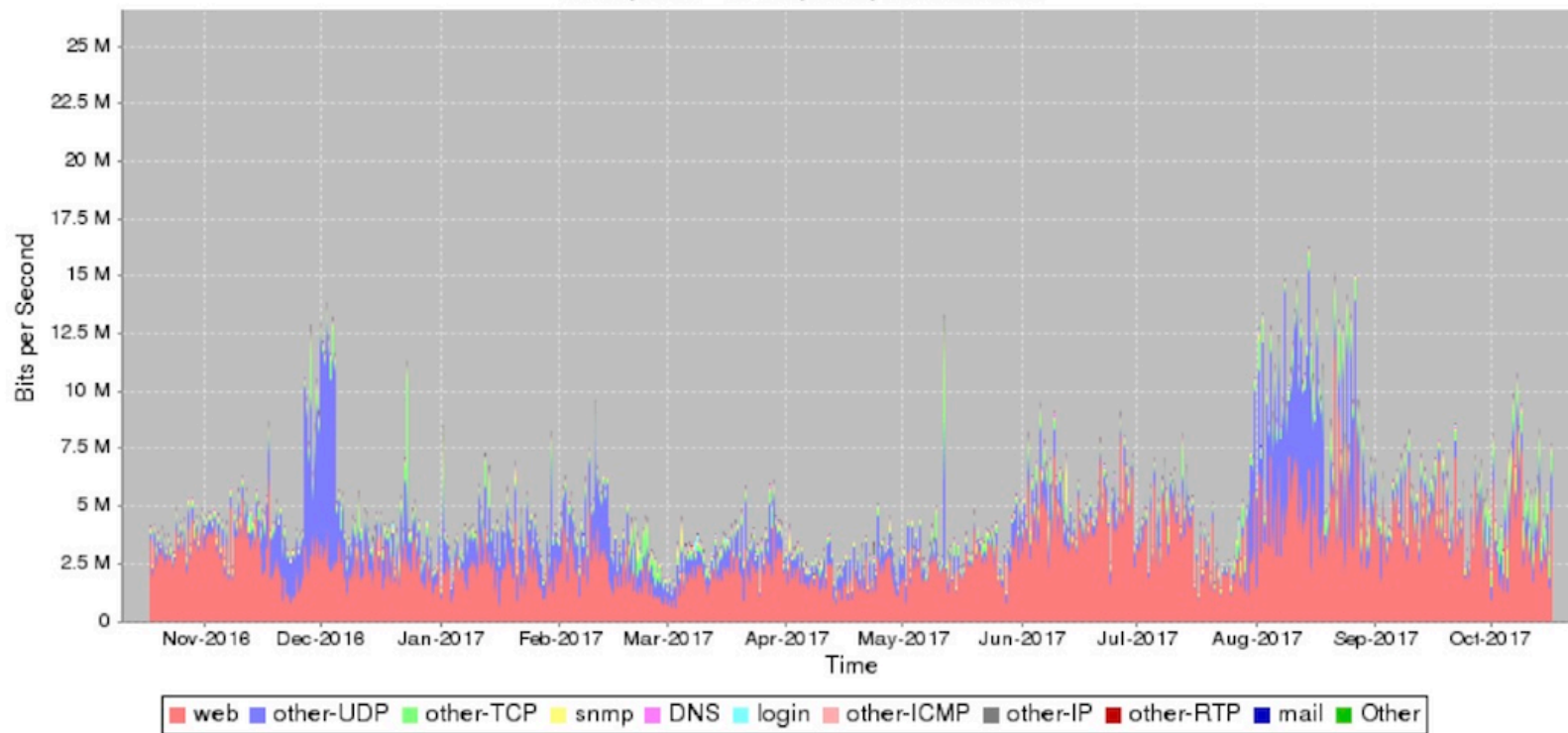
IP Source



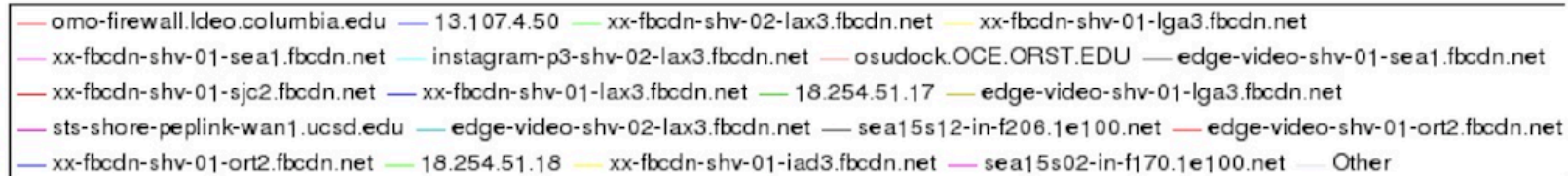
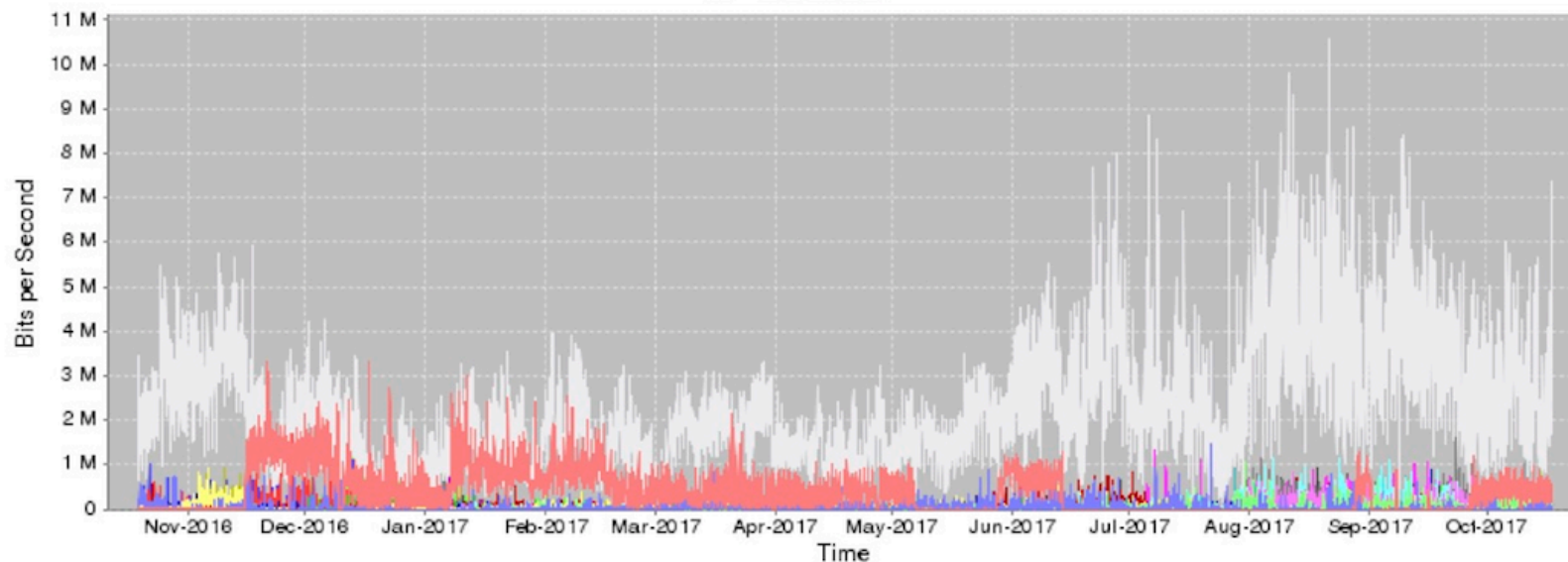
- omo-firewall.ldeo.columbia.edu — 13.107.4.50 — xx-fbcdn-shv-02-lax3.fbcdn.net — xx-fbcdn-shv-01-lga3.fbcdn.net
- xx-fbcdn-shv-01-sea1.fbcdn.net — instagram-p3-shv-02-lax3.fbcdn.net — osudock.OCE.ORST.EDU — edge-video-shv-01-sea1.fbcdn.net
- xx-fbcdn-shv-01-sjc2.fbcdn.net — xx-fbcdn-shv-01-lax3.fbcdn.net — 18.254.51.17 — edge-video-shv-01-lga3.fbcdn.net
- sts-shore-peplink-wan1.ucsd.edu — edge-video-shv-02-lax3.fbcdn.net — sea15s12-in-f206.1e100.net — edge-video-shv-01-ort2.fbcdn.net
- xx-fbcdn-shv-01-ort2.fbcdn.net — 18.254.51.18 — xx-fbcdn-shv-01-iad3.fbcdn.net — sea15s02-in-f170.1e100.net — Other

Top Protocol Groups Trend

18 Oct, 00:00 - 17 Oct, 00:00, interval=1 hr.

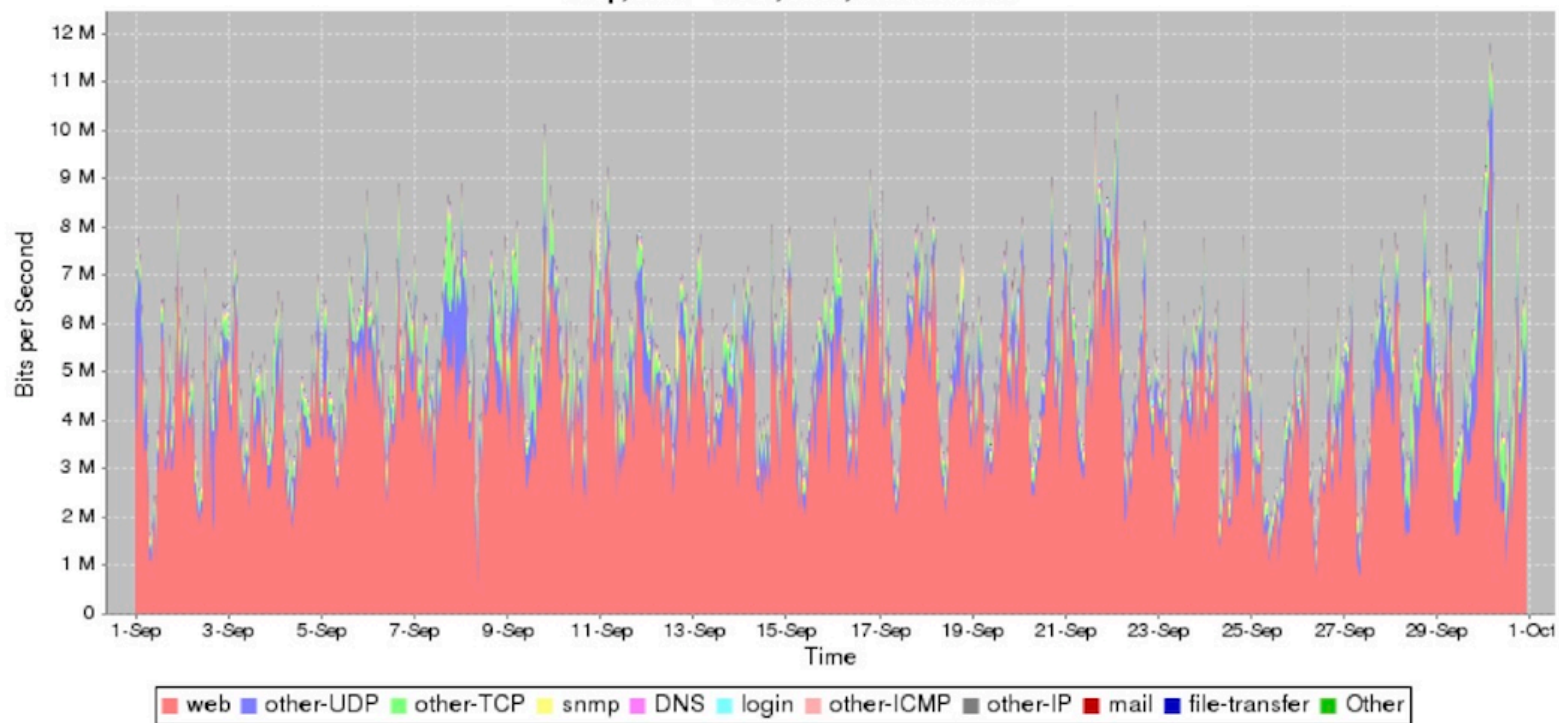


IP Source



Top Protocol Groups Trend

1 Sep, 00:00 - 1 Oct, 00:00, interval=1 hr.



18 MHz Lessons Learned



- ◆ **Increased bandwidth enhances science mission success**
- ◆ **Improves scientific party and crew morale and welfare**
- ◆ **Reduces burden on shipboard computer resource staff**
- ◆ **Enables shore based management of shipboard networking equipment and other shipboard systems**
- ◆ **Increases “goodput” Lowers retransmissions.**
- ◆ **HSN scalable architecture verified and tailored per use case (JASON on Revelle, CASPER on Sally Ride)**



“Captain – The crew were given the choice of better food or better Internet.

All but the cook chose better Internet.”

-Chief Mate Quicksort, RV Petasail

Thank you for your attention.